

IRISH REPERTORY THEATRE

MEET ME IN ST. LOUIS

A HOLIDAY SPECIAL
IN SONG AND ON SCREEN

A PERFORMANCE ON SCREEN



#IRISHREPOONLINE

IRISH REPERTORY THEATRE

CHARLOTTE MOORE, ARTISTIC DIRECTOR | CIARÁN O'REILLY, PRODUCING DIRECTOR

MEET ME IN ST. LOUIS

A HOLIDAY SPECIAL IN SONG AND ON SCREEN

BOOK BY
HUGH WHEELER

SONGS BY
**HUGH MARTIN &
RALPH BLANE**

BASED ON *THE KENSINGTON STORIES* BY **SALLY BENSON**
AND THE MGM MOTION PICTURE *MEET ME IN ST. LOUIS*

ADAPTED & DIRECTED BY **CHARLOTTE MOORE**

MUSIC DIRECTION BY
JOHN BELL

ORCHESTRATIONS BY
JOSH CLAYTON

PRODUCED BY **CIARÁN O'REILLY**

WITH **SHEREEN AHMED, WILLIAM BELLAMY, RUFUS COLLINS,
KERRY CONTE, MELISSA ERRICO, ALI EWOLDT, KATHY FITZGERALD,
IAN HOLCOMB, AUSTYN JOHNSON, JAY AUBREY JONES, KYLIE KUIOKA,
ASHLEY ROBINSON, AND MAX VON ESSEN**

edited by
**MERIDITH
SOMMERS**

scenic design
**CHARLIE
CORCORAN**

sound design, mix & music
**M. FLORIAN
STAAB**

lighting design
**MICHAEL
GOTTLIEB**

costume consultant
**TRACY
CHRISTENSEN**

production manager
**BRANDON
CHENEY**

production coordinator
**PAMELA
BRUSOSKI**

press representatives
**MATT ROSS
PUBLIC RELATIONS**

general manager
**LISA
FANE**

SONGS BY MARTIN AND BLANE PUBLISHED BY EMI FEIST CATALOG, INC.

PRODUCED FOR THE BROADWAY STAGE BY BRICKHILL-BURKE PRODUCTIONS, CHRISTOPHER SEABROOKE AND EPI PRODUCTS

THIS PRODUCTION IS MADE POSSIBLE WITH PUBLIC FUNDS FROM THE NEW YORK STATE COUNCIL ON THE ARTS, THE NEW YORK CITY DEPARTMENT OF CULTURAL AFFAIRS, AND OTHER PRIVATE FOUNDATIONS AND CORPORATIONS, AND WITH THE ASSISTANCE OF THE

MANY GENEROUS MEMBERS OF IRISH REPERTORY THEATRE'S PATRON'S CIRCLE.

CAST

<i>Esther Smith</i>	Shereen Ahmed
<i>Lon Smith</i>	William Bellamy
<i>Alonzo Smith</i>	Rufus Collins
<i>Lucille Ballard</i>	Kerry Conte
<i>Anna Smith</i>	Melissa Errico
<i>Rose Smith</i>	Ali Ewoldt
<i>Katie</i>	Kathy Fitzgerald
<i>Warren Sheffield</i>	Ian Holcomb
<i>Agnes</i>	Austyn Johnson
<i>Grandpa</i>	Jay Aubrey Jones
<i>Tootie</i>	Kylie Kuioka
<i>Postman, Trolley Man, Richard</i>	Ashley Robinson
<i>John Truitt</i>	Max Von Essen
<i>Narrator</i>	Charlotte Moore

TIME & PLACE

St. Louis, Missouri, 1903-1904

Running Time: 1 hour and 45 minutes, including a 10 minute intermission.

SPECIAL THANKS

Made possible in part by Debby and Rocco Landesman. Irish Rep would like to thank Patrick McEnroe, Jim Morgan, the Howard Gilman Foundation and Theatre Development Fund for their support of the season.

Meet Me in St. Louis is produced under the 2020 SAG -AFTRA New Media Agreement.

RUNNING ORDER

ACT 1

<i>Overture</i>	Orchestra and Chorus
<i>Meet Me in St. Louis</i>	Smith Family
<i>The Boy Next Door</i>	Esther
<i>Reprise: Meet Me in St. Louis</i>	Smith Family
<i>You'll Hear a Bell</i>	Mrs. Smith
<i>Drunk Song</i>	Tootie and Agnes
<i>Over the Banister</i>	John and Esther
<i>The Trolley Song</i>	Esther and Chorus

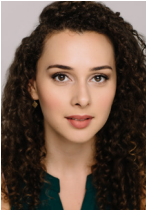
ACT 2

<i>Entr'acte</i>	Orchestra
<i>A Touch of the Irish</i>	Katie, Esther, and Rose
<i>Reprise: The Boy Next Door</i>	John and Esther
<i>Reprise: You'll Hear a Bell</i>	Mrs. Smith
<i>Wasn't It Fun?</i>	Mr. and Mrs. Smith
<i>Christmas Waltz</i>	Orchestra
<i>Auld Lang Syne</i>	Orchestra
<i>The First Noel</i>	Orchestra
<i>Have Yourself a Merry Little Christmas</i>	Esther
<i>Reprise: Meet Me in St. Louis</i>	Full Company

ORCHESTRA

<i>Piano/Conductor</i>	John Bell
<i>Woodwinds</i>	Jeremy Clayton
<i>Percussion</i>	Joshua Mark Samuels
<i>Harp</i>	Karen Lindquist
<i>Violin</i>	Suzy Perelman
<i>Cello</i>	Melanie Mason
<i>Bass</i>	John Convertino
<i>Music Assistant</i>	Adam Beskind

WHO'S WHO IN THE CAST



SHEREEN AHMED (*Esther Smith*) Shereen Ahmed is currently starring as Eliza Doolittle in the first national tour of *My Fair Lady*. Broadway: Lincoln Center

Theater's revival of *My Fair Lady* (OBC) understudying Eliza Doolittle. TV credits include *New Amsterdam* (NBC). She holds a Bachelor of Science in Sociology & Anthropology with a concentration in Criminal Justice from Towson University. She has been recognized as one of the '40 Under 40' people of influence in the US by the Arab American Foundation.

Aristocrats and The Quare Land. Off-Broadway: *Road to Damascus*, *The Seagull*, *Orson's Shadow*, *House and Garden*. Regional: *Lifespan of a Fact* (Hartford Theater Works,) *My Fair Lady and Gypsy* (Sharon Playhouse) *Venus in Fur* (Goodman), *Seminar* (Philadelphia Theatre Co.) *Michael Von Seibenburg Melts Through the Floorboards* (Humana), *The Old Masters* (Long Wharf), *The Autumn Garden and Dissonance* (Williamstown), *The Real Thing and Sherlock's Last Case* (Huntington), *In This Corner* (Old Globe), *Dinner with Friends*, *Hedda Gabler*, *Indian Ink*, *The Ruling Class*, *Macbeth*. Film: *After the Wedding*, *The Geezer*, *Wanted*, *Joshua*, *Milia*. Television: "The Deuce," "Madam Secretary" "Elementary," "Mysteries of Laura," "Forever," "Mozart in the Jungle," "Law & Order." Rufus studied acting at the Central School of Speech and Drama in London.



WILLIAM BELLAMY (*Lon Smith*) Off-Broadway: *On a Clear Day You Can See Forever* (Hubert, Dir. by Charlotte Moore), *Finian's Rainbow* (Dir. by Charlotte Moore), *The Emperor Jones* (Dance Cpt, Dir. by Ciaran O'Rielly) 2017 Outer Critics Circle award recipient for Best Revival of a Play. Pace University Musical Theatre Class of 2016. Proud member of AEA. IG: @W__illy @SeeOurTruths "Reformative is Performative"



KERRY CONTE (*Lucille Ballard*) Kerry is so happy to be back home at Irish Rep after appearing in *Meet Me in St Louis* (as Lucille in 2006), *Ernest in Love*, *The Irish...and How They Got That Way*, *A Child's Christmas in Wales*. National Tour: *White Christmas* (Betty), *Mary Poppins* (Winifred Banks/us Mary), *San Francisco: Roman Holiday*, Off-Broadway: *Encores!*, York Theatre, 92nd



RUFUS COLLINS (*Alonzo Smith*) Broadway: *The Royal Family*, *To Be or Not To Be*, *A Day in the Death of Joe Egg*, *An Ideal Husband*, *The Homecoming*.

Previously at Irish Rep: *The Dead 1904*,

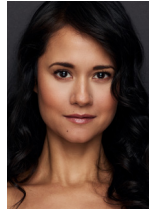
WHO'S WHO IN THE CAST

St Y. Regional: Theatre by the Sea, North Shore, MT Wichita, Wichita Symphony, City Springs Theatre, Muny, New London Barn. A thousand thanks to Charlotte, Ciarn, John Bell, and everyone at Irish Rep. Love to Ma and brother Joe. Always for Dad. kerryconte.com



MELISSA ERRICO (*Anna Smith*) “The Maria Callas of American musical theater,” as *Opera News* has called her, referencing both her silken voice and dramatic, expressive intensity, Melissa Errico’s career is characterized by a dazzling range of passions as actress, singer, and author. She is thrilled to return to Irish Rep where she has starred in numerous productions including her Drama Desk Award-nominated performances in *The Importance of Being Earnest* and *Candida*, and playing Sharon in the musical *Finian’s Rainbow* twice (the second time she chronicled in an essay for *The New York Times*). Most recently she starred as Daisy Gamble in Irish Rep’s acclaimed production of *On A Clear Day You Can See Forever* (which she also explored in an essay for *The New York Times* in a pioneering piece on the sexual gender stereotypes in American musicals). Also known for her starring roles on Broadway, her recent tribute album, *Sondheim Sublime*, was called by *The Wall Street Journal* “The best all-Sondheim album ever

recorded.” Nominated for a Tony for her appearance in Michel Legrand’s only Broadway musical, *Amour*, she was asked to write the eulogy to Legrand in *The New York Times* in 2019; while, that fall, Ghostlight Records reissued an expanded version of her symphonic album, which Legrand arranged and conducted, as *Legrand Affair Deluxe Edition*. She is currently working on her first book, a memoir tentatively titled *Terminal Ingenue*.



ALI EWOLDT (*Rose Smith*) Ali Ewoldt has appeared as Christine Daaé in *The Phantom of the Opera* on Broadway, Cosette in *Les Miserables* (Broadway, National Tour), *The King and I* (Broadway, Tour, Lyric Opera of Chicago), Maria in *West Side Story* (National Tour, International Tour, PCLO, The Muny, MTWichita) and Luisa in *The Fantasticks* (Off-Broadway). Regionally, she has played Philia in *A Funny Thing Happened on the Way to the Forum* (The Muny), Fan/Mrs. Bonds in *A Christmas Carol* (McCarter Theatre), Martha Jefferson in *1776* (The Muny) and Sarah Brown in *Guys and Dolls* (Sacramento Music Circus). Ali’s concert/symphony work includes: *Feinstein’s/54 Below*, Alice Tully Hall, The Town Hall, Canyon Ranch, NY Pops at Carnegie Hall, American Pops Orchestra, Houston Symphony, Kaohsiung Symphony and The Boston

WHO'S WHO IN THE CAST

Pops with Maestro Keith Lockhart. Her TV/Film credits include "The Michael J. Fox Show," "Yield," and the short films "Mia" and "The Cactus." Ali has a BA in psychology from Yale University and is a proud Filipina-American. @aliewoldt



KATHY FITZGERALD (Katie) Broadway: *Charlie and the Chocolate Factory* (as Mrs. Gloop); The original company of *The Producers* (as Shirley Markowitz)

starring Nathan Lane and Matthew Broderick, winning the most Tonys in Broadway history. *Swinging on a Star* (Drama Desk Nom. Best Featured Actress) *9 to 5* (as Roz; Outer Critics Nom.) with Allison Janney. Kathy has also performed over two thousand performances of *Wicked* on Broadway and the National tour as Madame Morrible (Broadway World Award.) Off-Broadway; *Damn Yankees* (as Doris) *Encores with Sean Hayes*. *Disaster at Triad*; *Donnybrook* at Irish Rep. Regionally Kathy has worked at The Muny, McCarter, and the Goodspeed Opera House. TV/ Film; "Smash", "Mercy", "One Life to Live", "Curb Your Enthusiasm," "The Next Three Days" with Russell Crowe, "Our Idiot Brother", and "The Producers." Recent credits include *Clue* at The Cleveland Playhouse, where she originated Mrs. Peacock; and she was nominated for a 2020 Indie Award for her work on *Indoor Boys*.



IAN HOLCOMB (Warren Sheffield) Off-Broadway: *London Assurance*, *It's A Wonderful Life*, *Ernest In Love* (Irish Repertory Theatre), *Murder In The First* (The Directors Company), *The Broken Heart*, *Macbeth* (Theatre For A New Audience), *Transport* (Irish Arts Center), *EightyThree Down* (Under St Marks) Regional: *Stupid F#@ing Bird* (Syracuse Stage/Portland Center Stage) *The Great Gatsby* (Virginia Stage), *A Midsummer Night's Dream* (Geva Theater), *Dial 'M' For Murder* (Dorset Theatre Festival), *A Midsummer Night's Dream* (Guthrie Theater) *Dying City* (Bottling Company) *Ghosts* (Commonweal Theatre.) Television/ Web: "CoExisting," "#ThatThingFromBefore," "BOKtv," Onion News Network Workshops: *Look Upon Our Lowliness* (New York Theatre Workshop), *Measured* (The Public Theatre), *This Bitter Earth* (TOSOS) *We Are Continuous* (Playwrights Center) Training: University of MN/Guthrie Theater BFA Actor Training Program.



AUSTYN JOHNSON (Agnes) Theatre: Austyn started her acting career portraying Amanda Thripp in the First National Tour of *Matilda*. She then continued the role of Amanda on Broadway. Film: She appeared as Caroline Barnum in the film

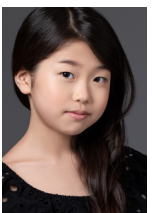
WHO'S WHO IN THE CAST

"The Greatest Showman". She also played the daughter of Tom Hanks in "The Post". Television: She was a guest star on TV'S "Fosse/Verdon", NBC's "The Blacklist", and Fox's "9-1-1". Austyn also co-starred on "Lost Girls" and "Kevin Can Wait".



JAY AUBREY JONES (*Grandpa*) Irish Repertory Theatre: Debut in *Meet Me in St. Louis*. Broadway: *How to Succeed...*, *Cats*. Metropolitan Opera: *Porgy*

and *Bess*. Off-Broadway: *Panama Hattie*, *Lolita*, *My Love*, *Take Me Along*, *Oh Captain!*, *Inacent Black and the Brothers*, *Divine Hysteria*, *The Cradle Will Rock*. Regional: *Assassins* (Yale Repertory Theatre), *The Drowsy Chaperone*, *Anything Goes* and *Gotham!* (Goodspeed Musicals), *A Little Night Music*, *Honk!*, *Ragtime*, *Street Scene* (Seaside Music Theatre), *How to Succeed...* (La Jolla Playhouse). Television: "To Tell the Truth," "Gotham," "The Michael J. Fox Show," "This Is New York," "The Electric Company," "All My Children," "One Life to Live," "Guiding Light." He is the voice of the "Laurel/Yanni" controversy. Film: *Shortcut to Happiness*. Graduate: Syracuse University.



KYLIE KUIOKA (*Tootie*) is thrilled to be a part of *Meet Me in St. Louis*! Kylie most recently appeared as Geraldine Bullet in the Off-Broadway show *Panama*

Hattie (The York Theatre). Her credits also include *The King and I* (Broadway Tour) and *The Remarkable Journey to Tiangua* as Lan (Somerled Arts/Developmental Lab). She also recently recorded a voice over for an upcoming animated feature film. Tremendous thanks to Charlotte, Ciaran, Jim Morgan, Bern Tan, A3 Artists Agency, Zoom Talent Management, the creative team, cast, and family. IG: @kyliekuioaka



ASHLEY ROBINSON (*Postman*, *Trolley man*, *Richard*) Irish Rep: Truman Capote's *A Christmas Memory* (Capote; NY Premiere/ 2015 Outer

Critics Award Nom), *Take Me Along* (Richard), *Meet Me in St. Louis* (Lon), and so many productions of *A Child's Christmas in Wales* that he's lost count! Other Theatre: *Floyd Collins* (Floyd; West End, London), *A Clockwork Orange* (Minister/ Old Woman/ Mum; New World Stages), *Casa Valentina* (Gloria; Original London Cast), *Little Rock* (Mike Wallace-Sheen Center Off Bway), Steve Martin's *Bright Star* (World Premiere ; Old Globe), *Merrily We Roll Along* (Tyler; Menier Chocolate Factory and West End), Originated the role of Jett Rink in the World Premiere of *Giant* (Helen Hayes Award nomination, Best Actor), as well as Tybalt in *The Last Goodbye* (the Jeff Buckley/ *Romeo and Juliet* musical) at Williamstown Theatre Festival. Film/TV:

WHO'S WHO IN THE CAST

Stan and Ollie (BBC Films, Sony), Hate (with Marcia Gay Harden), Fallen Souls. Writer: Ashley penned the play adaptation of *Brokeback Mountain* based on the story by Annie Proulx, *Lockhart* (written with Tony winner Jason Carr), which received an industry reading in London last year, and *Fall of '94* (written with Joseph Thalken and Ellen Fitzhugh) which is being developed at Alabama Shakespeare with a grant from the Shen Family Foundation. He's currently developing a musical version of the play *Come Back to the Five and Dive, Jimmy Dean, Jimmy Dean*. Ashley is a UCross Foundation 2019 writing resident. Raining: University of North Carolina School of the Arts.



MAX VON ESSEN (*John Truitt*) Max Von Essen is delighted to return to Irish Rep, having joined them on the 2004 production of *Finian's Rainbow*, as well as many galas. Broadway: *Anastasia*, *An American in Paris* (Tony/ Drama Desk/ Grammy nominations), *Evita*, *Les Misérables* revival, *Dance of the Vampires*, closing company of the original *Les Misérables*, *Jesus Christ Superstar*. NY: *Yours Unfaithfully*, *Death Takes a Holiday*, *Hello Again*, *Jerry Springer: The Opera*, *The Fantasticks*. Tours: *Falsettos*, *Xanadu*, *Chicago*, *West Side Story*. TV/Film: "Law & Order: SVU," "Elementary," "Boardwalk Empire,"

"The Good Wife," "Royal Pains", "Gossip Girl," "Seven Lovers," "Sex and the City 2," "Submissions Only" (webseries). His debut album, *Call Me Old Fashioned: The Broadway Standard* now available. IG & TW @maxizpad.

CHARLOTTE MOORE (*Director*) Recent directing assignments include: *Love Noël: A Performance on Screen*, *Molly Sweeney: A Performance on Screen*, *London Assurance*, *Love, Noël*, *The Plough and the Stars* as part of *The O'Casey Cycle*, *On a Clear Day You Can See Forever*, *Three Small Irish Masterpieces* by William Butler Yeats, *Lady Gregory* and *J.M. Synge*. New York premiere of Brian Friel's *The Home Place*, World premiere of Larry Kirwan's *Rebel in the Soul*, *Finian's Rainbow*, The Phyllis Newman Women's Health Initiative gala, Truman Capote's *A Christmas Memory*, and *Juno and the Paycock* and *Dancing at Lughnasa*. New York stage appearances include *A Perfect Ganesh*, *Meet Me in St. Louis*, *The Perfect Party*, *Morning's at Seven*, *Private Lives* (with Elizabeth Taylor and Richard Burton), and many performances with the New York Shakespeare Festival. Ms. Moore has received two Tony Award nominations, the Outer Critics Circle Award, the Drama Desk Award, the Drama League Award, the Irish America Top 100 Irish Award, The Eugene O'Neill Lifetime Achievement Award, and the 2008 Irish Women Of The Year Award. She is the recipient of the St. Patrick's Committee in

WHO'S WHO IN THE CAST

Holyoke's John F. Kennedy National Award, and has thrice been listed as one of the "Top 50 Power Women" in *Irish America Magazine*. Charlotte was named "Director of the Year" by *The Wall Street Journal* in 2011. Charlotte has recently been inducted in to the *Irish America Hall of Fame* and been awarded the Presidential Distinguished Service Award for the Irish Abroad, 2019 by President Michael D. Higgins.

JOHN BELL (*Music Director, Piano, Conductor*) *Meet Me in St. Louis* is the first show that John did with the Irish Repertory Theatre, and he is thrilled to revisit it in this extraordinary season. Since then, John has been the music director/supervisor at Irish Rep for *On A Clear Day You Can See Forever*, *Finian's Rainbow*, *Donnybrook*, *New Girl in Town*, *Transport*, *A Child's Christmas in Wales*, and their gala concerts since 2014. On Broadway, John has conducted *My Fair Lady*, *Fiddler on the Roof*, *On the Town*, and *An American in Paris*. He is also the music director of the First National Tour of Lincoln Center Theater's *My Fair Lady*. For City Center Encores: *Brigadoon*, *Me and My Girl*, *The New Yorkers*, *Cabin in the Sky*, *Do I Hear A Waltz*, *Lady Be Good*, and more (Associate Music Director). Other New York credits: Sondheim's *Marry Me A Little* (New Cast Recording) and Adam Gwon's *Ordinary Days* (Keen Company); *Radio City Christmas Spectacular*; *Candide* at Carnegie Hall.

He holds a BFA in Musical Theatre from Ithaca College, a Masters in Music from CUNY, and has studied at the Manhattan School of Music.

JOSH CLAYTON (*Orchestrations*) Josh's orchestrations have been heard at Irish Rep in *On A Clear Day*, *Finian's Rainbow*, *Donnybrook!* and *New Girl in Town*. Recently, his orchestrations have been heard across the country in the National Tour of Lincoln Center's Tony-winning revival of *My Fair Lady*. Other orchestration credits include; *The King and I* (National Tour), *Titanic* (Signature Theatre and South Korean productions) and *A Funny Thing...Forum* (Two River Theatre). On Broadway, Josh provided additional orchestrations for *Gypsy* (with Patti LuPone), *On The Town* (2014 Revival), and was the assistant conductor of the 2009 revival of *Finian's Rainbow*. He has provided orchestrations for such stars as Patti LuPone, Kristin Chenoweth, Nathan Lane, Cheyenne Jackson, and Denyce Graves. He is currently the assistant musical director of the City Center *Encores* series.

CHARLIE CORCORAN (*Scenic Design*) NY designs include: *The Seafarer*, *Shining City*, *The Emperor Jones* (Hewes design award nomination), *The Quare Land* (Origin First Irish Award), *The Weir* (Irish Rep) *Billy and Ray* (Vineyard Theatre), *Straight* (Acorn Theatre), *The Marriage of Figaro*, *The Triumph of Love* (Juilliard).

WHO'S WHO IN THE CAST

Craving for Travel (Peter J. Sharp Theatre), *The Last Smoker In America* (Westside Theatre), *A Perfect Future* (Cherry Lane), *The Bully Pulpit* (Beckett Theatre), *Exits And Entrances* (Primary Stages). Regional theatre designs include: *A Comedy of Tenors*, (Outer Critics Circle Award) (Cleveland Playhouse/McCarter Theatre), *Vanya & Sonia & Masha & Spike* (The Goodman Theatre), *The Barber Of Seville*, *The Marriage Of Figaro* (The McCarter Theatre), *Ma Rainey's Black Bottom*, *Absurd Person Singular*, *Lives of Reason* (Two River Theatre), *Without Walls* (Center Theatre Group), *The 25th Annual Putnam County Spelling Bee* (Buck's County Playhouse), *Bad Jews* (Ensemble Theatre Company/English Theatre of Frankfurt). Opera designs include: *Fidelio* (Santa Fe Opera), *Così fan Tutte* (co-production Metropolitan Opera And Juilliard), *Don Giovanni*, *Katya Kabanova* (Juilliard) *The Turn of the Screw*, *The Flood* (Opera Columbus), *The Magic Flute*, *The Bartered Bride* (Granada Theatre, Santa Barbara), *L'Opera Seria* (Wolftrap Opera), TV designs include: "Full Frontal with Samantha Bee" (TBS), "Mozart in the Jungle" (Amazon), "Believe" (NBC), "Madam Secretary" (CBS).

M. FLORIAN STAAB (*Sound Design, Mix, Music Recording and Editor*) is a sound designer and composer based in Brooklyn, NY. Credits include: *The Library*, *Pretty Hunger*, and *Teenage Dick* (Public Theater); *Uncle Vanya* (Pearl Theatre

Company); *Into the Breeches!* (Trinity Rep); *Winners* (Ensemble Studio Theatre); *Death of the Liberal Class* (New Ohio); *Crackskull Row* (The Cell and Irish Rep); *The Emperor Jones* and *Shining City* (Irish Rep); *Minor Character* (New Saloon); *A Hunger Artist* (Tank/Sinking Ship); *This Lingerin' Life* (Here Arts); *Mad Libs Live!* (New World Stages); *The Bonapartes* (Ars Nova); *A Bright New Boise* (Partial Comfort) and *The Suitcase Opera* (Chicago Opera Vanguard). Staab was born and raised in Germany and received his BA from Oberlin College and MFA from Krannert Center. He is an associate artist with Sinking Ship Productions and the resident sound designer at the O'Neill National Playwrights Conference. FlorianStaab.com

MICHAEL GOTTLIEB (*Lighting Designer*) has designed more than 28 productions at the Irish Rep. His credits include *Woman and Scarecrow*, *The Home Place*, *Woody Sez*, *Shining City*, *The Weir* and *Freedom of The City*. His other New York designs include *Lysistrata Jones* (Broadway), *Storyville* (York), *Major Barbara* (Pearl), *Rated P*, *Signs of Life*, *Spain* (MCC), and *Election Day* (Second Stage). Regional work includes credits at The Goodspeed, Trinity Rep, The Hangar, The Long Wharf, and The Old Globe. His work in television lighting has earned him an Emmy Award and several other award nominations. mgld.com

WHO'S WHO IN THE CAST

TRACY CHRISTENSEN (*Costume Designer*) designed the 2006 Irish Rep production of *Meet Me in St. Louis*, directed by Charlotte Moore, and is pleased to be collaborating on this virtual version! Broadway: revival of *Sunset Boulevard* starring Glenn Close, and *Souvenir*, starring Judy Kaye. Recent premieres: *Scotland, PA*. Off-Broadway: *Anne of Green Gables* at the Merry Go Round Theater (2018 Syracuse Area Live Theater Award nomination) and Kate Hamill's adaptation of *Pride & Prejudice*. Other projects: *Candide* at Carnegie Hall with John Lithgow, *Love's Labour's Lost* at the Folger (Helen Hayes nomination), *Carousel* (London's English National Opera), *Noises Off!* (Asolo), *Oklahoma* (Goodspeed), *Mamma Mia!* for Great Lakes Theater (2018 Cleveland Critics Circle Award), *Sweeney Todd* starring Emma Thompson, *Lady Day at Emerson's Bar & Grill* (film for HBO with Audra McDonald), and *Seussical* for TheatreworksUSA (Lucille Lortel nomination). Faculty member at Purchase College SUNY for costume design. tracychristensen.com.

KAREN LINDQUIST (*Harpist*) is thrilled to be back playing harp at Irish Rep. Previously she was part of the band for *On A Clear Day*, *Finian's Rainbow*, *Donnybrook* and *Ernest In Love*. A graduate of the Juilliard School, Karen has appeared at festivals around the country and is a busy freelancer in the

New York metropolitan area. She is on the faculty of the Rudolph Steiner School and is also harpist for *Canta Libre* a quintet of harp, flute and strings.

MELANIE MASON (*Cellist*) Melanie joyously returns to *Meet Me in St. Louis* - the first show she played at the Irish Rep (2006) followed by *Ernest in Love*, *Donnybrook*, *Finian's Rainbow*, and *On a Clear Day*. From New York to Tel Aviv, Melanie has been privileged to be a part of distinguished ensembles among world-renowned conductors and soloists. As a member of the Israel Chamber Orchestra, she performed in concert halls around the globe for a decade; she also played for several seasons with the Israel Philharmonic. Melanie has played many long-running shows on Broadway, regionally, and nationally; she's also accompanied popular artists such as Aretha Franklin and Tony Bennett, and toured North America with *Star Wars: In Concert*. Eternal gratitude to Charlotte Moore and Ciarán O'Reilly. Special thanks to John Bell for his extraordinary musical collaboration and to Josh Clayton for his exquisite cello parts!

SUZY PERELMAN (*Violinist*) has been performing in the orchestras on Broadway for the past 15 years. A former member of the Utah and San Antonio Symphonies, Suzy performs in orchestra concerts, recitals, and shows regularly throughout the NY area. Recent

WHO'S WHO IN THE CAST

venues have included Merkin Hall, the 92nd Street Y and Carnegie Hall. Recent shows include *The Unsinkable Molly Brown*, *Radio City Christmas Spectacular*, *Evita* and *Cats*. Suzy loves practicing her violin and spends hours doing it every day. When not practicing, Suzy loves cycling, word games, long walks, flying trapeze, Israeli dancing, traveling and hanging out with family and friends. She is also the teacher of 10 young violin students studying the Suzuki Method of violin.

JEREMY CLAYTON (Woodwinds) Jeremy is absolutely thrilled to be “back home” at the Rep! Broadway/NY: *Sunday in the Park with George*, *Fiddler on the Roof*, *Grand Hotel*, *The New Yorkers*, *Passion*, *Paint Your Wagon*, *1776*, *The Cradle Will Rock*, *A New Brain*, *First Daughter Suite*, *Take Me Along*, *New Girl in Town*. Tours: *Miss Saigon*, *Oklahoma!*, *Happy Days: A New Musical*, *The Drowsy Chaperone*. Recordings: *Sunday in the Park with George*, *Judy Kuhn's Rodgers, Rodgers & Guettel*, *Passion*, *Paint Your Wagon*, *A New Brain*, *First Daughter Suite*. Jeremy is also a freelance performer, designer and director. Many thanks and congrats to the brilliantly talented Josh Clayton, John Bell, Charlotte Moore and Ciaran O'Reilly for making this all a gorgeous reality. Eternal gratitude and love to Mom and Dad. Double B.A. Music & Dance, Skidmore College. Proud member of Local 802 AFM.

JOHN CONVERTINO (Bass) Contrabassist for the orchestra, was a student of Homer Mensch at the Juilliard School '92. He was raised by jazz musicians in his home town Utica, NY. This combination of musical backgrounds gives him a sound that make you want to dance. Recording credits include, *Mi Alma Mexicana* with the Philharmonic Orchestra of the Americas and The Lyons Chamber Orchestra. Musical theater credits include, touring productions of *Fiddler on the Roof*, *How the Grinch Stole Christmas*, *42nd Street*, *A Chorus Line* (Shanghai debut), *My Fair Lady*, and *Happy Days: A New Musical*.

JOSHUA MARK SAMUELS (Percussion) Joshua is a NY based drummer/percussionist. Most recently, Joshua was the percussionist for *Beetlejuice the Musical* on Broadway. He has performed in several Broadway shows and toured across the country with *Jersey Boys* and *Aladdin*. He also works every season with the Rockettes at the *Radio City Christmas Spectacular*, as well as other events and shows at Radio City Music Hall.

PAMELA BRUSOSKI (Production Coordinator) Pamela has been a stage manager at Irish Rep for over 15 years and for more than 40 shows. Notable/favorite productions include *Finian's Rainbow*, *The Emperor Jones*, *Dancing at Lughnasa*, *Molly Sweeney*, and *Freedom*

WHO'S WHO IN THE CAST

of the City. Broadway: *Beauty and the Beast* and *Little Women*. Selected Off-Broadway: Charles Grodin's *The Right Kind of People* (Primary Stages,) *A Last Dance for Sybil* with Ruby Dee and Ossie Davis (New Federal Theatre,) The Mint Theatre Company, York Theatre Company, and Carnegie Hall. Pamela has been a PSM at Pittsburgh Public Theater for 4 seasons. Favorite PPT shows include *The Tempest* and *Indecent*. MFA: Brooklyn College (CUNY).

CIARÁN O'REILLY (*Producing Director*) Favorite directing credits include: *A Touch Of The Poet: A Performance on Screen*, *The Weir: A Performance on Screen*, *Lady G: Plays and Whisperings of Lady Gregory*, *Dublin Carol*, *The Shadow of a Gunman*, *The Seafarer*, *The Dead*, *1904*, *Shining City*, *Off the Meter*, *On the Record*, *The Weir* (Calloway Nom.), *Banished Children of Eve*, *The Emperor Jones*, (Callaway Award, O'Neill Credo Award, Drama Desk, Drama League, and Lucille Lortel Nom.), *The Hairy Ape* (Drama Desk Drama League and Callaway Nom.), *Philadelphia, Here I Come!* (Drama Desk Nom). Irish Rep acting roles include *Da*, *Juno and the Paycock*, *Dancing at Lughnasa*, *Molly Sweeney*, *Candida*, *Aristocrats*, *A Whistle in the Dark*, *The Shaughraun*, and *The Irish and How They Got That Way*. He appeared in the Roundabout Theatre Company's production of *A Touch of the Poet* with Gabriel Byrne. He has appeared at the

Abbey Theatre in Dublin and made his Broadway debut in *The Corn is Green*. Films include *The Devil's Own* (starring Harrison Ford), "Law & Order," "The Irish...and How They Got That Way," "Third Watch," "Bored to Death" and "The Knick." Ciarán has recently been inducted in to the *Irish America Hall of Fame* and has been awarded the Presidential Distinguished Service Award for the Irish Abroad, 2019 by President Michael D. Higgins.

IRISH REPERTORY THEATRE Founded by Ciarán O'Reilly and Charlotte Moore, Irish Repertory Theatre opened its doors with Sean O'Casey's *The Plough and the Stars* and is now in its 29th Season. Irish Rep is currently the only year-round theatre company in North America devoted to bringing Irish and Irish-American works to the stage. Recognized with the Jujamcyn Theatres Award, a special Drama Desk Award for "Excellence in Presenting Distinguished Irish Drama," the Lucille Lortel Award for "Outstanding Body of Work," and a 2013 Outer Critics Circle Special Achievement Award in recognition of 25 years of producing outstanding theatre. Irish Rep presents the very best in Irish theatre, from the masters to the new generation of Irish and Irish-American writers who are transforming the stage. Located in the heart of New York's Off-Broadway community, Irish Rep offers an engaging perspective on the Irish and their unique contributions to the world of drama.

IRISH REP ADMINISTRATIVE STAFF

Artistic Director	Charlotte Moore
Producing Director	Ciarán O'Reilly
General Manager	Lisa Fane
Director of Development	Jason Smoller
Director of Marketing & Digital Strategy	Frances Howorth
Associate Director of Development	Seth Bauer
Art Director & Marketing Manager	Muireann Lalor
Company Manager	Anna Rhoads
Audience Services Manager	Sarah Nichols
Production & Events Coordinator	Jason Brubaker
Marketing Associate	Gráinne Kelly
Box Office Associate	Dan Bass
Marketing Intern	Isabel Thomas
Development Intern	Megan Savage
Digital Strategy Intern	Katie Williams
Legal Counsel	James O'Malley
.....	Jeremy Keele, Kathryn Smith,
.....	Carmine D. Boccuzzi, Leigh Giroux
Accountants	PKF O'Connor Davies, LLP.
Human Resources/Payroll	Paychex
Insurance	AJG Risk Management
Bank	M&T Bank
IT Consultants	Red Paladin
Financial Services	Patricia Taylor

PRODUCTION STAFF

Technical Director	Brandon Cheney
Production Coordinators	Pamela Brusoski
Overture filmed & edited	Carlos Cadona
Colorist	Sarah Nichols
Music Assistant	Adam Beskind
Production Assistant	Simon Patrick Geaney
Music Assistant	Adam Beskind
Additional Ext Footage	Seamus O'Reilly
Key Grip	James Blydenburgh
Stagehands	Kyle King, Amanda Joy Loth,
.....	Imani McCants

PRESS REPRESENTATION

Matt Ross Public Relations
 Matt Ross, Nicole Capatasto,
 Liz Lombardi, Claire Wojciechowski

FOLLOW #IRISHREPONLINE



FACEBOOK.COM/IRISHREP



@IRISH_REP



@IRISHREP



@IRISHREP

BOARD OF DIRECTORS OF IRISH REPERTORY THEATRE

Kathleen Begala, *Chair*
 Tom Cashin
 John DellaNoce
 Eoin Duane
 John Duane
 Clementina Santi Flaherty
 Rich Flood

John Gardiner
 Edward Greene
 Marc P. Hanrahan
 Michael Keogh
 Cornelius V. Kilbane, Jr.
 Simon Lorne
 Ellen McCourt, *Chair Emeritus*

Charlotte Moore
 Colleen Murphy
 Dore Normille
 Katie Rustum O'Neill
 Brendan O'Reilly
 Ciarán O'Reilly
 Nancy Woodruff





A Letter from the Directors

We feel, especially at Christmastime and at the beginning of a New Year, that it is important to give profound thanks for the extraordinary support we have received, and continue to receive from our audiences, both old and new.

What a strange time! How will we remember it? Will we remember our beautiful theatre empty, cold, dark, and silent? Or will we remember, proudly, the rich programming we have exhibited and maintained through the long months of a cruel, worldwide pandemic?

We will remember the pride in our devoted staff, working every day in isolation, from Manhattan and Brooklyn to Dublin and beyond. We will remember the brave artists and technicians used to warm applause from smiling audiences, who have soldiered on with memorable performances, and we will remember with deep appreciation our wonderful board who never wavered in their staunch support.

We are a stubborn lot. We are looking forward to accepting and conquering whatever obstacles the world has in mind to deter us in the months to come as we continue our journey toward a grand re-opening and ultimate victory.

THANKS FOR STICKING WITH US AND
"HAVE YOURSELF A MERRY LITTLE CHRISTMAS!"

A handwritten signature in black ink, reading "Charlotte Moore".

CHARLOTTE MOORE, ARTISTIC DIRECTOR

A handwritten signature in black ink, reading "Ciarán O'Reilly".

CIARÁN O'REILLY, PRODUCING DIRECTOR

CONTRIBUTORS TO IRISH REPERTORY THEATRE

IRISH REPERTORY THEATRE MEMBERS

(as of November 16, 2020)

Irish Rep gratefully acknowledges the following individuals for support received this year.

Although space limitations allow us only to list donors of \$250 and above, we thank our supporters at all levels.

UNDERWRITERS

\$20,000 AND ABOVE

Hon. Elizabeth Frawley
Bagley*
Kathleen Begala &
Yves-André Istel*
John DellaNoce*
Kathleen & Michael
Dowling
John F. Duane*
Tina Santi Flaherty*
John Gardiner*
Loretta Brennan
Glucksman*
Deborah & Rocco
Landesman*
Simon Lorne*
Ellen McCourt*
Colleen Murphy*
Denis O'Brien*
Pernod-Ricard*
Katie Rustum O'Neill &
Peter O'Neill*
Nancy Woodruff* &
Mark Lancaster

ANGELS

(\$10,000 - \$19,999)

Anonymous
Jane & Raphael Bernstein
Jeanne & Paul Carroll
Tom Cashin* &
Jay Johnson
Rebecca & Eoin Duane*
Paul Ford*
Edward Greene*
Michael Keogh*
Kaori Kitao
Thomas Moore*
Dore Normile*
Sheila & Brendan O'Reilly*
Joseph &
Mary Lou Quinlan*
Gary Stern
The Ireland Funds
America*
EULAV Asset Management
and Value Line Funds

DIRECTORS

(\$5,000 - \$9,999)

Sheila Broderick
Barbaralee
Diamonstein-Spielvogel*
Aine Donovan &
Gregory L. Snyder*
Margaret Duffy, in memory
of Brandon Quinn
Herbert & Cynthia Fields
Joseph Hassett
James Hodge
Jim & Pat Houlihan
Cornelia Long
LouAnn &
John McGlinchey*

Mutual of America*
Wendy O'Neill
Joan O'Meara Winant
John Shay
Kathleen Walsh &
Gene Bernstein
Nina O'Leary Zilkha &
Michael Zilkha

PRODUCERS

(\$2,500 - \$4,999)

Roger Berlind
Judge Frederic Block*
David & Deirdre
Brennan*
Mary Cahill*
Chris Carolan &
Vernon Bauer
Fred Chernoff
JP Morgan Chase
Cheryl DellaRosa
Jeffrey Dubiner*
W. Leslie Duffy
John & Marianne Fouhey
Patricia Francy
Bart Friedman, in honor of
Kathleen Begala
Paul and Bebhinn Gallen
Carol & Steve Gutman
Molly K. Heines &
Thomas J. Moloney*
Stephanie Holmes
Robert & Sally Huxley
Adrian Jones
Franklin Lowe &
Anne Anderson*
Jane Anne Majeski,
In Memoriam Vivian
Majeski
Patricia &
Bernard McElhone
Gerard Meagher*
Dianne Mundy*
Patricia & Robert O'Brien
Kathleen & Peter Quinn
Matthew Ricciardi
David Richenthal
Nancy Roskind
Bernard Schleifer*
Michael Schussler
Stephanie Shuman
Daniel Snow
Dennis Swanson
Jackson Toby
Kathryn Wagner
Elsie Walker*
Mary Wallace
Peter & Barbara Wright

Patricia &
Bernard McElhone
Gerard Meagher*
Dianne Mundy*
Patricia & Robert O'Brien
Kathleen & Peter Quinn
Matthew Ricciardi
David Richenthal
Nancy Roskind
Bernard Schleifer*
Michael Schussler
Stephanie Shuman
Daniel Snow
Dennis Swanson
Jackson Toby
Kathryn Wagner
Elsie Walker*
Mary Wallace
Peter & Barbara Wright

BENEFACTORS

(\$1,000 - \$2,499)

Anonymous (5)
Allen Alford
Kay Allaire*
Lani Azeneg

Meg McKeon Baker &
James Baker
Marc Baron
Constance P. Beaty
Paul Begala
Rosemary & Jim Bell
Nancy & Bruce Bent
James & Marie Biggs
Jonathan Blackman
Carmine Boccuzzi
Richard & Miriam Bossard
Joseph Brophy
Elizabeth AR Brown
Garrett & Jeanette Buckley
Edmund Byrnes
Joseph Cahalan*
Isabelle & Charles Carroll
Linda Carson*
Orlagh Cassidy*
Michael Castellon
Tina Chen
John Chiti*
Kathleen Chopin
Michael Clarke
Rufus Collins*
Patrick Comiskey*
Jerry Crawford
Susan Crowley
John Cunningham
Clare Curtin
Roy & Dorothy Dailey*
Daniel Daly
Martin Daly
Beth Ann Day*
Jack Deacy*
Barbara and Ben Denihan
Jamie deRoy*
James Dinneen
Patrick Dorton*
Dot Dot Productions LLC
Kevin Downes
Tom & Linda Dupree
James Dwyer
Linda & James Ellis
Michael Emerson
William Farkas
Soloviova Faruolo
Lorna Fenenbock*
Eleanor Fink
Steve Finley
Derek Flanagan
Joan Flanagan
Barbara Fleischman
Richard Flood
Lori & Edward Forstein
Candice & John Frawley
Helen & Henry Freedman*
Maggie Gallagher*
Joan & Robert Galliven
Marguerite Gary
Robert Gender
Patricia Geoghegan
Fred Gilbert
John Glover
Andrew Gordon

Joyce Gordon
Barbara Gottlieb
Arthur Grayzel & Claire
Lieberwitz
David Green
Francis J. Greenburger*
Amy Grissom
Jan Guifarro
Jennifer Hand & Thomas
Tierney
Kevin J. Hanratty
Nicole Harman
Catherine Harnett*
Ben Harte
Ellen & James Hillman*
Mark & Jennifer Hughes
John & Dorothy Hurley*
Bill Hutton*
Dana Ivey*
Kathleen & George
Jamison
Philip M. Jelly Jr
Ken Jenkins
Robert Wood Johnson
Foundation
Patricia & William Jordan
Roselle & Brian Wynne
Kaltner
Jordan Katz and Ellen
Schleifer
Nina Kaufelt*
Joan Kedziora*
Jim Keegan
Ellis Kelleher & Eamonn
Quinn
Shaun Kelly*
Ed Kenney*
Kathleen & Timothy
Kennon*
Larry Kirwan
Howard Kitt
Ann and Burt Korelitz*
Nina Korelitz Matza*
Jeremy Kramer*
Judith Krupp
Lillian M. & Monte Lang
Keith Langworthy
Riki Kane Larimer*
Angela Lansbury Shaw
Thomas Leane
Francois & Calleen
Letaconnoux*
Jeanne Levan
Beth & Jim Lewis
Laurianne Listo*
Kai Lui*
Mary Lumet
Bertil Lundqvist*
Joan & Robert Lunney
William Lynch
Charlene & Gary
MacDougal
Micheline MacGregor
Doug & Donna Macmillan
Marotti

CONTRIBUTORS TO IRISH REPERTORY THEATRE

Brian & Florence Mahony
Edward Malone
Alan Mark
Elizabeth Marks & Harry
Ostrer
Melanie Mason
John Mastrobattista
John McCarrick
James McCarthy & Magda
Ghanma
Thomas McCool
Helen McGrail
Anne McGuinness
Nancy & W. Scott McLucas
Mary Melkonian
Bethany & Robert Millard*
Giel Millner
Valerie & Ned Monaghan
Michael & Ginger Montel
James Morgan*
Paul Muldoon &
Jean Hanff Korelitz
Barry Munger
Kane and Martin
Nussbaum
Peter O'Connell*
Brian O'Dwyer
James O'Malley*
Sylvia & Michael O'Neill
Peter & Marilyn Oswald
Steven Pavlakis
Perry Pazer
Rose Petrocelli
Maryellen Phelan
Thomas Rafferty
Gustavus Remak Ramsay
Carol Maria Rehhausser
Jonathan Reilly
Michael T. Ridge*
Liz Robbins*
Stanley Schiffman
Rose & Laura Schwally
Thomas & Cynthia Sculco*
Ruby T. Senie
Julia Shea
Terry & Bill Sheridan
Zachary & Susan Shimer
Pamela Singleton
Barry Skovgaard
Genevieve Brunet Smith
Matthew Patrick Smyth
Ted Smyth
Lenore Steiner
Patricia Stockhausen &
Michael Emmerman
Irene Stockton
Maurice Sullivan
Lisa Mary Sullivan*
Martha Swift
Jim & Norma Tallon
William Thurston
Michael Tierney
Suzanne Uhlend
Mindy Utay
Esther Milsted & Mark
Villamar
Joan Madden Wilson*
Warren & Marcia Wood
Brann Wry
Ellen Tenenbaum &
Craig Zimmerman
Burton & Susan Zwick

PARTNERS

(\$500 - \$999)

Anonymous (5)
Michael Adams
Janice Akerhielm
Oliver & Brenda Anderson
Andrea Anson
Anthony Argentino
Jerry Auld
Patricia Bailey
Mr. & Mrs. Robert L.
Barrett
Dan Barry & Mary Trinity
Francis Barry
Andrea Battel
Charlotte Baumgartner
Kathleen Baynes
Mary & Sherwin Belkin
Andrew Benenson*
Hillel M. Bennett
Maureen Bennett
Scott Bennett and
Valentina Bondarenko
Maureen Bentley
George & Marilyn Berger
Norman & Alice Berkowitz
Eileen Bermingham
Fritz Beshar
Clint Best
Jane Biberman
Lewis Black
Alisa Blacklaw
Sheila & Clarence Blair
C.M. Bournazos
Gail Boyle
Kathleen & Edmond Brady
Loretta & Dennis Brady
Peg Breen
Barry Breitburg & Kathryn
S. Gallagher
Shelaghmichael Brown
Frances & Vincent Browne
Ann Buremeyer
Dr. Linda L. Byington
Pat Calderwood &
Ken Rolston
Daniel Campbell
John Campion
& Andrea Waxman
Carl Capista
Charles Carberry
Judy Cash
Carolyn Chave
Samantha Chen
& Campbell Langdon
Thomas & Oonagh Christie
Cornelius J. Clancy
Kathleen Clinton
& Peter Corl
Robert Clougherty
Barrett Cobb
& Harry Saltzman
Irene & Richard Coffman
Joshua Cohen
Harry Conaway
Kevin Confoy*
Julie Connolly
Paula Connolly
Bruce Cooper
Daniel Cooper
Jeremiah Corkery

Linda Corradina
Kathleen Corrigan
Matthew Costabile
Michael D. Kunkel
& L. Henry Cox
Chris & Liz Craig
Philip Craig
Patricia Crowley
Patrice & Dennis Cuddy
Tom Curran
Chris Daley
Catherine Deane
Declan Denehan
David desJardins
Adriana Dilancea
Jack DiMonte
Ann & Dan Dipietro
Robbi & George Doherty
Maralyn Dolan
Lorna Dolan &
Bruce Breimer
Richard & Jennie Dorn
Laura Egelhoff
Carolyn Ellis
Maureen Engelbert
David Fallon
Jim Fauvell
Aine Fay
Marty Feinman &
Amy Cooney
Karl Finegan*
Peter Finn
Jackie Fisher
Lyn & Brendan Fitzgerald
John & Geraldine
Fitzgerald
Corine & Thomas
Fitzpatrick
Thomas Fitzpatrick
Blair Flicker
Michael & Noreen Flugger
Charles Forma
Kathleen & Mike Forman
Kay Foster
Katherine Freedman*
Burt Freeman
Aileen & Brian Gallagher
Christian Gannon
Mortin Garbus
Loraine Gardner
Carol Geisler
Mary & Alec Gerster
Thomas & Elizabeth Gillett
Don Ginty
Ken Glickfeld
Lillian Gola
Ellen C. Goldberg
Harry Goldman
Margaret Goodman
Albert Gorman
Marianne & Brian Grady
Rebecca Grafstein*
Michelle Griffin
Marie Grimm
William Grogan
Paul Groncki &
Michelle Tokarczyk
Carol Groneman
David & Phyllis Grossman
Kathy & Sonny Hagendorf
Phillip Hanvy
Mary Hardin
Mary Harrigan
Elizabeth M.
Harrington, Esq.
Mary Harrison
Martin Hason
John & Kathy Heaney
Reily Hendrickson
Patricia Hennessey*
Patrick Hennigan
Barbara Hoffman
Ann E. Hohenhaus*
Peter J. Hooper
Marv Hopkins
Peter J. Horan
Katharine Houghton
Rita Houlihan
Zeljko Ivanek
Jeanette Ivers
Peter Entin &
Barbara Janowitz
Margaret & Bill Kable
Sarah Kagan
Michael Keane
Kathleen Kearns
Coco Kee &
Kevin Goldstein
Edward Kelleher
Mary Beth Kelly
Deirdre Kelly
Patricia Kendall
David Kingsley
Ellen Kirch
Arlene Kraat
Stewart & Donna Krevolin
Stephanie Lebowitz
Jonathan Lee
Beverly Leffers
Gina Maria Leonetti
Douglas Liebafsky
Patricia Lilley
Teresa & Thomas Lilly
Paul Lvovsky
Maura Lynch
Gail Magaliff
Paul Mahood
Tom Majewski
Timothy Malone
John Michael Maloney
Jean & Bob Markley
Peggy Marks
Kevin Maroney
Harry Martin
Adam E. Max
Gerald McCarthy
Joan McCarthy
Keith McCarthy
Sophie McConnell
Brian McDonough
Diana & Malachy McCourt
Anne & Robert McGoldrick
Brenda McGowan &
Elaine Walsh
Stephen & Jeanne
McGrath
Judith & Raymond
McGuire
William & Jude McLane
Susan McMartin*
Lynne McNavich
James McNeil
Jerry & Judy Mermel
John & Susan Michel

CONTRIBUTORS TO IRISH REPERTORY THEATRE

Lowell Miller*
 Helen Mills
 Ann Miner
 Kimberly Mitchell
 Donald Monahan
 Doreen Monahan
 The Monahan Clan
 Colin Moran
 Michael & Kerry Morelli
 Donna & John Moroney
 Thomas & Lara Mullarkey
 Daniel Muller
 MaryAnne Muller
 Monica Mullin
 Diane Mundy
 Eugene & Mary Murphy
 Dan Napolitano*
 Margaret M Neckles*
 Illona Nemeth &
 Alan Quasha
 Julie Nettere
 Mary Jane & John Nolan
 Martin Novack
 Kevin O'Brien
 Janet O'Connor
 Jane & Robert O'Dowd
 Niall O'Gara &
 Geraldine Collins
 Brigit O'Meara
 Anne O'Neill
 James O'Neill
 Miriam O'Regan Roman
 Charles & Priscilla Osewalt
 Jim O'Sullivan &
 Margaret Molloy
 Robert O'Sullivan*
 Sean O'Sullivan
 Daniel Smith &
 Laura Palantone*
 George Pappas
 Terry Davis Perl
 Richard Phalon
 Roger Pollock
 Kristin Powers
 Marilyn & Thomas Preston
 Barbara Price
 Matthew Quirk
 Jonathan D. Rabinowitz
 Mary Anne Ramer*
 Linda Raphael
 Maria & Steve Reed
 Stephen Reid
 Anne M & James M Reilly
 Gretchen Rennell Court*
 Joseph J. Roach
 Jonathan Roberts
 Sarajane Robinson
 Senturia
 Renee Roelle
 Marjorie Rosenthal
 James Rowan
 Barbara Rudd
 Catherine Ryan
 Alfred Sainato
 Robert Salerno
 Karen & Charles Schader
 William Schaefer
 Jesse Schaffer
 Lou and Angela Schimenti
 Stephen Schneider
 Henry Schroeder
 Rachel & William Schultz

Donna Sethi
 Bart Sheehan
 Patricia Sheehan
 Alannah Sheerin
 Mary Sheerin
 Kyle Shepard
 Maureen Sheridan
 E. Michael Shine
 Tod Short
 Kim Siegfriedt
 Kathleen Hullan
 Simmons*
 Charles Slivinski
 Carol B. Smith
 David & Laura Smith*
 Mary H. Smith
 J. Smith-Cameron &
 Kenneth Loneragan
 Patricia Sochor
 Stephen Sondheim
 Kathleen & David Spiegler
 Barry Spielvogel
 Ann Stanton
 Michael & Beth Stanton
 Todd Stockdale
 Richard Strother
 Aline Sullivan
 Charles Sullivan
 Robin Sullivan
 Michael Sweeney
 Carole Teller
 Edward R. Tierney
 Mary Tierney*
 Tom Travers
 Meredith Trede &
 Brad Kenyon
 Michelle & David Tucker
 Judith & William Turner
 Mimi Turque Marre
 Loretta M Ucelli*
 Vera Vento-Jacobs*
 Kelly Victor
 Caroline Vigneron
 Melissa Vogel Brown
 Sandra Wagenfeld
 Linda Walton
 Jennifer Warren
 Richard & Linda Warren
 Patricia M. Weeks
 Hillary Weisman
 Karen Weissberger
 Michael Weller
 Deborah Whitmore
 Ronan Wicks
 Erick Williams
 Richard Wool
 Susan Yarnell
 Diane Yu &
 Michael Delaney
 Patricia Zervos
 Joe Zimmel
 Dina Zuckerberg

ASSOCIATES
 (\$250 - \$499)
 Anonymous (6)
 Debo Adegbile
 Kim & David Adler
 Miriam Adelman
 Arthur & Wilma Aeder
 Dean Alfange
 Patricia Armstrong

Conor Bagley
 Jonathan Bank &
 Katie Firth
 Edward Barlow
 Judith Barlow
 Betsy Barbanell
 John Bastable
 Andrea Battel
 Martha Battles
 Seth Bauer &
 Elysa Marden*
 Jim Bay
 Georgia Beach
 Cecilia Beirne
 Maureen Bentley
 Donal Bermingham
 Ellen Birger
 Ellen Blocher
 Arlo Blocher
 Dymrna Bowles &
 Donal Farley
 Nathan Brandt Jr.
 Thomas Brandt
 David Brennan
 Patrick Brennan
 Patricia Bresee
 Iris Brest
 Susan Brody
 Kevin & Virginia Brooks
 Judie Brophy
 Michael & Robin
 Bullington
 Charles & Barbara Burger
 Sidney J. Burgoyne &
 Jack W. Batman
 Byrne/Luddy Families
 Maureen & James
 Callanan
 Paul & Lisa Canty
 Carolyn Castpick Meehan
 Daniel Casey
 Neil Casey &
 Agnes Cavalari
 Timothy Casey
 Constance Christensen
 Cornelius Clancy
 Robert & Isobel Clark
 Sarah Clarkin
 Kathleen Cobb
 Lewis Cole
 Edwina & Robert Conrad
 Patricia Conran
 Mary Kay Conwell
 Linda Cronin
 Michael Crowley
 Jackie Cummings
 Glenn Cunningham
 Robert E. Curley
 Helen & Denis Curran
 Francesca Curtin
 Jeanne Curtis
 John & Ellen CurtisJeff
 Dailey
 Franco Dalessandro
 Blythe Danner
 Jack Deacy
 Mary Deady
 David Dean
 Aileen Denne-Bolton
 Kathleen DeVito
 Adriana Dilancea
 Joanne C. Dillon

Rita Dillon
 Margaret Dixon
 Nancy M. Donahue
 Robert Donnalley
 James Donnelly
 Charles Donohue
 Beverly & Charles Donohue
 Mary Donovan
 James Doran & Ricelle
 Grossinger
 John & Sara Doran
 Richard & Jennie Dorn
 Sally Dorrough
 Irene & James Dougherty
 Arden Down
 Charles R. Drew
 Kevin & DG Duffy
 Mary Ellen & James Duffy
 Patricia Dugan
 Emily Dunlap
 Don & Sheila Dunphy
 Michael Ely
 Paul Engh
 Peter Faber
 Judith Falci & Rosalind
 Steinberg
 Mary Falk
 Daragh Farrell
 Kathleen A. Fay
 Stephen J. Fearon
 Emer Featherstone
 William & Joan Felder
 Stephen Fields
 Robin Fitelson
 Anne & John Fitzgerald
 Jean Fitzgerald
 Dawn Fitzpatrick
 John Fitzpatrick
 Robert Flaherty
 Joanne Flanagan
 Michael G. Fleming
 Sarah Foote
 Priscilla Ford-Frein
 Joan Fortune
 David Frankel
 Richard Frankel &
 Kathleen Clark
 Steven Friedman
 John Friedman
 Lynnel Garabedian
 Michael Garber
 Mary & Edward Gaylor
 Edward I. Geffner
 Adrian Gill
 John Gillespie
 David & Suellen Globus
 Joe Godfrey
 Eleanor Goldhar & John
 Vollmer
 Harriet & Jonathan
 Goldstein
 Lydia M. Gordon
 Clare Gorman
 Thomas Gormley
 Marc & Susan Gottridge
 Aidan Synnott & Elizabeth
 Grayer
 Amy Greer
 John Gregory
 FFrans & Richard Habib
 Michael Hagerman
 Robert Hall

CONTRIBUTORS TO IRISH REPERTORY THEATRE

Patricia Halligan	Ann Leddy	Kevin Murray	Elizabeth &
Martha Hally	Mary B. Leddy	Marilynn Scott Murphy	Richard Scarlata
Kathleen Halvey	Maribel Ledezma-Williams	Kate Murray	Sherri & David Schmidt
Joseph Parenteau &	Maurice DuPont Lee	Kevin Murray	Peter Schrag
Eleanor Hamill	Harding Lemay	Amy Musher	David Schuster
Cliona Hamilton	Mina Levin	Arlene Nadel &	Stephen &
Dede Hapner	Mary Levine	Richard Hammer	Miriam Schwartz
Kay Haran	Tess Lewis	Charles Nash	James M. Scott
Mary Hardi	Jeffrey Lew	James Nash	Joseph Sgammato
Sheldon Harnick	Mary Shannon Little	Carole Newcombe	Carole Shaffer-Koros
Delphi Harrington	Laurence S. Lockridge	Marietta O'Brien	Susan Shanks
James Harrington	Michael Lonergan, IV	Kathy Rose O'Brien	Lorraine Shanley
Mary R. Hardin*	Suzanne Lopez	John & Mary Anne	John J. Sheehy
James Harrington	Joseph & Linda LoSchiavo	O'Callahan	Elizabeth & John Shelley
Cheryl & Edward Heaton	Leonard Lowell	Seamus O'Cleireacain	Lee Sheppard
Margaret M. Healy	Dayna Lucas	Geaird O'Ciardhubhain	Gretchen Siebel
Marybeth Hegedus	Tami Luby & Ed Purce	Jerry & Ellen O'Connell	John Simon
Georganne Heller	John P. Lyden, MD	Eileen O'Connell	Maureen Sladek
Michael Herko	Attracta Lyndon	Frederica O'Connor	Caryl & John Slater
Judith & Jack Herschlag	Jane & Bill Macan	Edward O'Dea	Melanie Sloan
Sigrid Hes	Lucille Maffia	Adele O'Grady	Anthony Smith
Neil Hickey	Lynne Malina	Kevin O'Mealy	Karen Smith
Elizabeth Hitz	Veronica Mallozzi	Colin O'Neill	Kevin Smith
Mary Hoar, in memory of	Patricia Malone	Elizabeth O'Neill	Thomas Smith
Ira Goldman	Florence Mannion	Peter & Carmel O'Reilly	Rich Soja
Frank Hoffmann	Kathleen McCabe	Kevin O'Rourke	Monroe Sonnenborn
Jen Hogan & Scott Murphy	Mary Jane	Patricia O'Shea	Margaret Spandonis
Mary Jean & Cecil Holland	& George McCartney	Mary O'Sullivan	David Staller
Mary Horner	Maura & John McCormack	Leslie Ogan	M. Jane Stanicki
Dan Houser	John McDonagh	Helene Pahl	Joanne W. Stavrou
Andre Hurni	Andrew McDonough	Eugene Papowitz	Walter Stewart
Karen Howlett	Katherine McDonough	Jeanne & Ron Parke	Bob Greene &
Geraldine Hughes	& Mark Dichter	Carole Pesner	Dianne Stillman
Alan Jones & Ashley	Erin McElhinney	Pfizer Foundation	Quint Studer
Garrett	William McElroy	Nancy Phillips	Kitty Sullivan
Maxine Isaacs	Molly McEnery	Joseph Picciano	Larry Sullivan
Penny Jackson	Diane McEnroe	Morris M. Podolsky	Michael Sullivan
Gale & Jim Jacobsohn	Mary E. McGeady	Carol Prendergast &	Nancy Sussman
Guy Johnson	Patricia McGhee	Andy Greenberg	William Sutton
Simon Jones	Linda McGillicuddy	Ms. Felice Proctor	Patricia Sweeney
Julie Jordan	Michael McGinnis	Olive Crone & Dave Prouty	Vincent Tarasovis
Julia & Esther Judge	Patricia McGivern	Marcia & John Purcell	Susan Tarrence
Joan Kaefer	Andrew & Judith McGowan	Frances Qualter	Joseph Taylor
Ann Kappler	Carolyne McGuire	Brendan Quinn	Roxanne Taylor
Mary Keane	Peggy McGuire	Ita Rahilly	Kenneth & Jean Telljohann
Kevin J. Kearins	Eileen McInerney	Barry Reed	Susan Tirschwell
Peter Keil	Francis McInerney	Marcia Reidy	George Tsandikos*
Edna Kelleher	Kathleen McKeever	Margaret Reilly	Howard Tucker
Breda McGovern &	Helen McMahon	Tria Reuss	Mollie Tucker
William Kelleher	Nancy McMahon	Barbara Reynolds	Judith & William Turner
Margaret Kelly	Terrence McNally	Charles Rich	Alfred Uhry
Mickey & Geraldine Kelly	Karen McQuiston	Nigel W. L. Richmond, in	Martha Van Hise
The Kelsey Family	Marian Mearon Conneely	memory of Ronald O.	Jan Van Meter
Eileen Kennedy	Deborah Meek	Jacobson	Linda Vaughan
William Kennedy	Martin Meisel	Michael Rigsby	John Verdon
Janet Keyes	Julie Meyer	Joseph J. Roach	Sandra Wagenfeld
Shirley & Dennis	Frances Milberg	Kathleen Roberts	Susan Wagner
Klusesener	Judith Miller	Lynn Roddy	Daniel & Judith Walkowitz
Agnes Koczka	Myra Miller	Lysa Rohan	James & Patricia A. Walsh
James J. Kolb	Courtney Mitchell	Caroline & John Romans	Cynthia Wainwright
Caroline & Marc Kornutik	Juan Montoro	James & Emily Rowan	Joan Waricha
Carol & Sanford Krieger	Terence & Elise Moran	James Rowley	Jan Warner
Miodrag Kukrika	Edward & Eileen Morgan	Marianne Rutter	Louise & Daniel Weisz
Robb Lady	Mary Jo Morgan	Mary D. Ryan	Janet West
Cynthia & Anthony	Patrick Morgan	Anne Nucci-Sack	Frances Wiener
Lampert	Frank Morra	& Peter G. Sack	Helen Williams
Colin Lane	Jean & Louis Morrell	Michael Salvatore	Tony Walton
Patrick Lardieri	Janet Moschetta Bell	Jacinta Orlando	Leatrice Wolf
Katherine Laupot	Robert Moss	Gus Samios	G. Vaughan Wortman
Russell Lawyer	Laura Mosso	John Savage	Lori-Ann Wynter
Paula Lazeski &	Deirdre Mullane	Laura Scanlon	Robert H. Yunich
Marc Oliveri	Richard Murphy	Janet Kane Scapin	

CONTRIBUTORS TO IRISH REPERTORY THEATRE

CAMPAIGN FOR A PERMANENT HOME

Although limited space in this program only allows us to list donations of \$1,000 and above, we gratefully acknowledge all contributors to our capital campaign. Every gift brings us one step closer to completing the acquisition of our facilities and securing a permanent home for Irish Repertory Theatre.

\$1,000,000 AND ABOVE

Francis J. Greenburger
Time Equities, Inc.
Office of the Mayor of New York,
Bill de Blasio
Office of Manhattan Borough
President, Gale A. Brewer
New York City Council,
Speaker Corey Johnson
City of New York
Department of Cultural Affairs,
Commissioner Tom Finkelpearl

\$100,000 TO \$999,999

The Booth Ferris Foundation
Charina Endowment Fund
Empire State
Development Corporation
Department of Foreign Affairs,
Emigrant Support Programme &
the Consulate General of Ireland
Irish Department of
Arts, Sports, & Tourism
New York State Dormitory Authority
New York State Office of Parks,
Recreation & Historic
Preservation
Clementina Santi Flaherty
Anita Jaffe
Frank & Ellen McCourt
Susan & Zachary Shimer
Genevieve Brunet Smith

\$25,000 TO \$99,999

Anonymous
Kathleen Begala & Yves-André Istel
Irving & Jane Brown
The Robert Sterling Clark
Foundation
Howard Gilman Foundation
Assembly Member
Richard Gottfried
Marc & Ashley Hanrahan
James & Ellen Hillman
The Hyde & Watson Foundation
The Anna Maria & Stephen Kellen
Foundation, Inc.
W. Scott & Nancy McLucas & the
One World Foundation
Janet & LeRoy Neiman
Thomas J. Moran &
Mutual of America
Brendan & Sheila O'Reilly
Joe & Mary Lou Quinlan
The Estate of Geraldine E. Rhoads

Daniel & Joanna Rose
Patricia Smith
Michael & Marjorie Stern
The Dorothy Strelsin
Foundation, Inc.
The Michael Tuch Foundation, Inc.
The Xerox Foundation

\$10,000 TO \$24,999

Anonymous (2)
Martha & Thomas G. Armstrong
Bruce & Nancy Bent
David & Deirdre Brennan,
in honor of Vincent P. Brennan
Loretta Brennan Glucksman
Sheila Broderick
Wendy Davis,
in memory of James M. Brennan
John & Anne Dockery
Patrick J. Hennigan
The Gilder Foundation
Joan Kedziora, MD
Keith & Diane Langworthy
John & Kay McEnroe
John McMartin
Katherine Mosby,
in memory of Suzanne Mosby
Charlotte Moore
New York State Council on the Arts
Mrs. Lawrence O'Brien
William & Nancy O'Hagan
Ciarán O'Reilly & Jennifer Essen
Susan Steiger

\$5,000 TO \$9,999

Anonymous
Monique & Paul Abel
The American Ireland Fund
Rene-Pierre & Alexis Azria
Virginia Brody
James & Bridget Cagney
Mary Cahill
Ann & Richard Carr
The Thomas & Agnes Carvel
Foundation
James & Oona Clare
James S. Beauregard Dineen
Lawrence & Karen Doyle
Peter Doyle
Eleanor Fink
Paul Ford
David & Patricia Goodrich
Rebecca & Laurence Grafstein
William J. Hamilton, Jr.
Lola Jaffe

Jake's Saloon
Patricia & William Jordan
William Karatz
Derek & Mary Keaveney
Jim & Karen King
Suzanne Mados
Brian & Florence Mahony
Anthony & Patricia Mazzone
Brian & Rosemary McAllister
Carolyn & Gerry McGrath
Jeanne & Steve McGrath
Mollie Schnoll
Kathe Mull & Connor Smith
Mary Ellen Murphy &
Henry Cavanna
Lawrence O'Brien III
Walter R. O'Neil
Judy & Hal Prince
Peter A. & Kathy Quinn
Robert Savage & Nanette Lepore
Thomas & Cynthia Sulco
Jean & Kenneth Telljohann
Jay Tunney
Jerry Wade
The Lila Wallace Acheson
Theatre Fund
Joan Waters
The Donald & Barbara Zucker
Foundation

\$1,000 TO \$4,999

Anonymous
Stephen Alexopoulos
Allen Alford
Kay Allaire
Robert Barrett
Christina Clancy Allison
Oliver & Brenda Anderson
The Arthur Foundation
Brad & Amy Ball
Herbert A. Bennett Arnhold &
S. Bleichroeder
George & Marilyn Berger
William Block
Ray & Mary Brady
Robert Burton
James & Mary Callanan
Robert & Joan Campbell
Paul & Jeanne Carroll
Anthony & Joan Cavanna
Joyce Chelberg
Tina Chen
Kevin Collins
Vincent & Joan Comiskey
J. Walter Corcoran

CONTRIBUTORS TO IRISH REPERTORY THEATRE

CAMPAIGN FOR A PERMANENT HOME

(as of February 10, 2020)

Edna Craddock	Kaori Kitao	Peter & Carmel O'Reilly
John Cullen	Max Klimavicius	The Paulazzo Family
Catherine G. Curran	Norma Langworthy	Ellen Peckham
Steve & Maggie Dixon	Terence & Rita Lennon	Andras & Imelda Dardis Petery
Alexis Doyle	Thomas Leonard	Charlotte Quaintance
Joyce Doyle	Martin Lewis & Diane Brandt	Catherine Rinaldi
James Duffy	The Frederick Loewe Foundation	Leslie & Curtiss Roach
Joan & William Felder	Kathleen & Edward Ludwig	Ellen M. Rose,
Herbert & Cynthia Fields	Frank & Mary Macchiarola	in memory of Reginald Rose
Evelyn Finn	John Maguire	Rosalie Sayles
Barbara Fleischman	Jane A. Majeski	Charles & Karen Schader
Charles Forma	John & Vivian Majeski	Margaret M. Sharkey
Lori & Edward Forstein	Edward Malone	Melvin Silverman
Roger & Marion Gilbert	Raoul Mancini	Kathleen H. Simmons
Joyce Gordon	James & Ellen Marcus	Edgar O. Smith
Amy Greer & Mark Murphy	Peggy Marks	Rich Soja
Teresa & Jay Grimm	Judith & David Marrus	Helen Spear
Mr. & Mrs. Albert Gurney	Margaret McConnell	Lisa Sullivan
The Haley Foundation	Bernard & Patricia McElhone	Martin & Antoinette Sullivan
Diane Hawes	John & Sarah McGinty	Dennis Swanson
Thomas Hayden	Ned & Valerie Monaghan	Laurence Tishler
Michael & Laura Higgins	Marty Murray,	Bernadette Toomey
Barbara Hultay	Murray & Josephson, CPA's	Don & Rosemary Travis
Mr. & Mrs. Robert Huxley	Ed & Alexandra Napier	Albertus Van Den Broek &
Dana Ivey	Colleen Noall	Pat Duffy Van Den Broek
John Joyce	David P. Nolan	Lorraine & Jack Walker
Julia Judge	Prudence O'Connor Neubert	Francis H. Williams
Tom & Valerie Kennedy	Jeanne & John M. O'Connor	Andrew Xu & Timothy Iverson
Cornelius V. Kilbane, Jr.	Michael & Sylvia O'Neill	Bob & Joanne Yunich

(as of October 21, 2020)

FOUNDATION, CORPORATE & GOVERNMENT SUPPORT

Irish Repertory Theatre's work would not be possible without public funds provided from the New York City Department of Cultural Affairs with support from Mayor Bill de Blasio, Cultural Affairs Commissioner Tom Finkelpearl, New York City Council Members Corey Johnson and Daniel Dromm, and Manhattan Borough President Gale A. Brewer, as well as support from New York State, including Governor Andrew Cuomo, and Assembly Members Michael Cusick and Richard N. Gottfried.

\$50,000 AND ABOVE

Howard Gilman Foundation
The Department of Foreign Affairs and the
Consulate of Ireland in New York
City of New York, Department of Cultural Affairs
The Shubert Foundation

\$20,000 AND ABOVE

Anonymous
The American Ireland Fund*
Mutual of America*
The Harold and Mimi Steinberg
Charitable Trust
New York State Council on the Arts

\$10,000 AND ABOVE

Northern Ireland Bureau,
British Council Northern Ireland, and the
Arts Council of Northern Ireland
Pernod Ricard USA*
The Lucille Lortel Foundation
The Fan Fox and Leslie R. Samuels Foundation

The Michael Tuch Foundation
The Dorothy Strelsin Foundation, Inc.*
The Waldman Foundation

\$5,000 AND ABOVE

Aer Lingus
The Axe-Houghton Foundation
The Gladys Kriebie Delmas Foundation
The GHR Foundation
Obediah Fund of the Coastal Community
Foundation
The Billy Rose Foundation, Inc.
Tourism Ireland*

\$1,000 AND ABOVE

The Actors' Equity Foundation
The Corymore Foundation
The George Mead, Jr. Foundation
The Lambs Foundation
The Rodgers and Hammerstein Foundation

**Includes support of Irish Rep's Annual Gala*