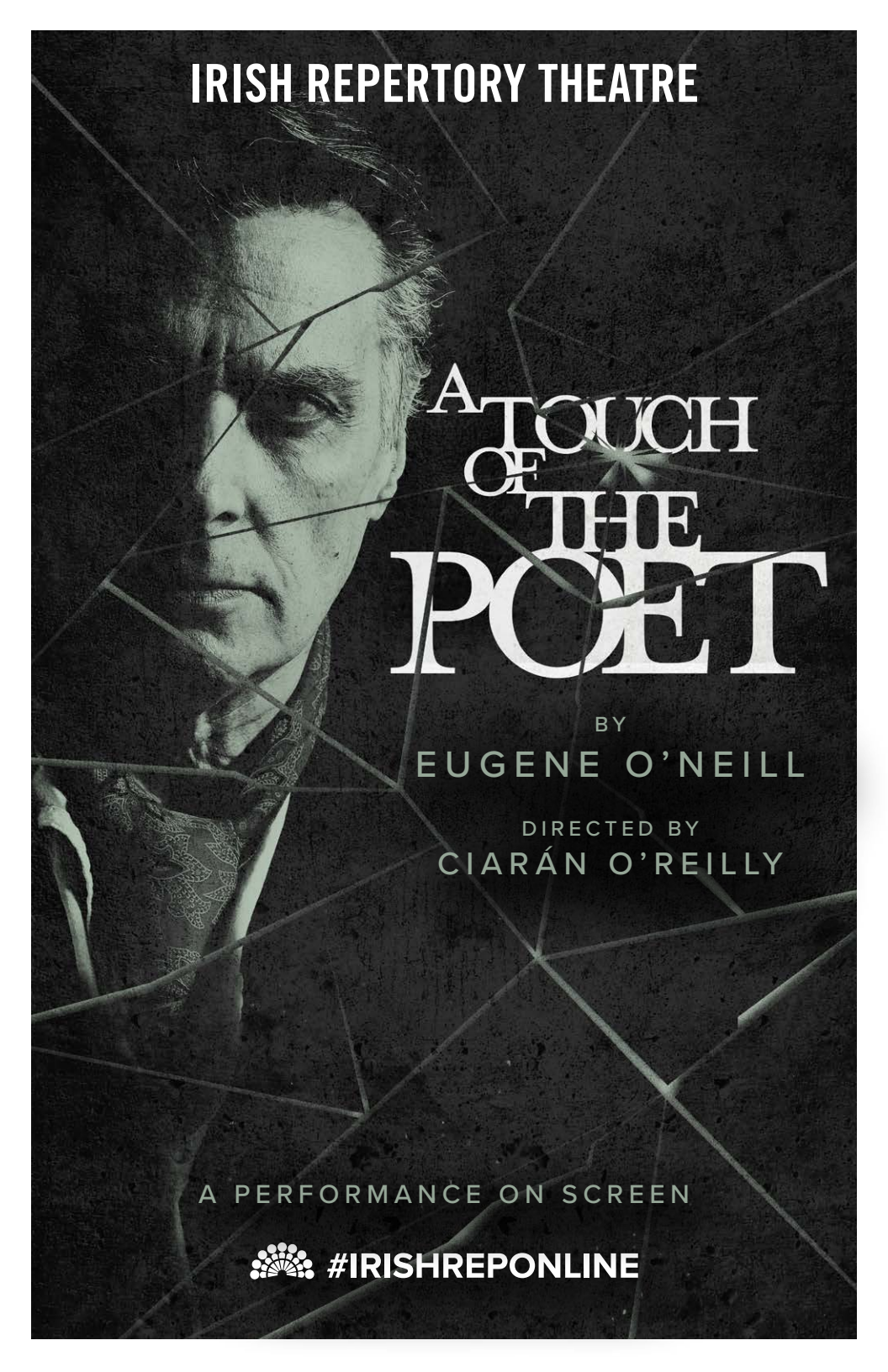


IRISH REPERTORY THEATRE



A TOUCH  
OF  
THE  
POET

BY  
EUGENE O'NEILL

DIRECTED BY  
CIARÁN O'REILLY

A PERFORMANCE ON SCREEN



#IRISHREPOONLINE

# IRISH REPERTORY THEATRE

CHARLOTTE MOORE, ARTISTIC DIRECTOR | CIARÁN O'REILLY, PRODUCING DIRECTOR

A PERFORMANCE ON SCREEN

# A TOUCH OF THE POET

BY EUGENE O'NEILL

DIRECTED BY CIARÁN O'REILLY

with **BELLE AYKROYD, CIARAN BYRNE, ROBERT CUCCIOLI,  
KATE FORBES, MARY McCANN, ANDY MURRAY, DAVID O'HARA,  
TIM RUDDY, DAVID SITLER, and JOHN C. VENNEMA**

---

scenic design  
**CHARLIE  
CORCORAN**

costume design  
**ALEJO  
VIETTI**

lighting design  
**MICHAEL  
GOTTLIEB**

sound design and mix  
**M. FLORIAN  
STAAB**

original music  
**RYAN  
RUMERY**

video editor  
**SARAH  
NICHOLS**

casting director  
**DEBORAH  
BROWN**

production coordinator  
**APRIL ANN  
KLINE**

hair design  
**ROBERT-CHARLES  
VALLANCE**

dialect coach  
**AMANDA  
QUAID**

associate costume designer  
**GALE  
BALDONI**

makeup artist  
**JOE  
DELUDE**

press representative  
**MATT ROSS  
P.R.**

general manager  
**LISA  
FANE**

---

The creative team for the postponed on-stage production of *A Touch of the Poet* includes the digital creative team as well as Properties by Sven Henry Nelson, Associate Stage Manager Sarah Baughman, and Fight Direction by Rick Sordelet.

---

THIS PRODUCTION IS MADE POSSIBLE WITH PUBLIC FUNDS FROM THE NEW YORK STATE COUNCIL ON THE ARTS, THE NEW YORK CITY DEPARTMENT OF CULTURAL AFFAIRS, AND OTHER PRIVATE FOUNDATIONS AND CORPORATIONS, AND WITH THE ASSISTANCE OF THE MANY GENEROUS MEMBERS OF IRISH REPERTORY THEATRE'S PATRON'S CIRCLE.

---

## CAST

---

<i>Sara Melody</i> .....	Belle Aykroyd
<i>Dan Roche</i> .....	Ciaran Byrne
<i>Cornelious "Con" Melody</i> .....	Robert Cuccioli
<i>Nora Melody</i> .....	Kate Forbes
<i>Deborah Hartford</i> .....	Mary McCann
<i>Jamie Cregan</i> .....	Andy Murray
<i>Paddy O'Dowd</i> .....	David O'Hara
<i>Patch Riley</i> .....	David Sitler
<i>Nicholas Gadsby</i> .....	John C. Vennema

—————

**RUNNING TIME:** 2 hours 40 mins including a 15-minute intermission

—————

---

## TIME & PLACE

---

Boston, Massachusetts

1828

---

## SPECIAL THANKS

---

Special thanks to the Howard Gilman Foundation and the Emigrant Support Program of the Irish Department of Foreign Affairs.

---

Produced under the 2020 SAG-AFTRA New Media Agreement.

---

---

---

## WHO'S WHO IN THE CAST

---



**BELLE AYKROYD** (*Sara Melody*) can be seen this summer on Netflix's season 5 of "Workin Moms". Her film credits include Martha in feature film "Highway One" and Sam in "IRL", a new short for the Hooked App platform. She played The Ghost of Christmas Past in *A Christmas Carol* on San Francisco's Geary Stage. Belle is a recent graduate of American Conservatory Theater's MFA acting program and is very excited about making her New York theater debut on the Irish Repertory stage.



**CIARAN BYRNE** (*Dan Roche*) Theatre includes: *Moment* (Studio Theater), *The Dead: 1904* (Irish Rep), *The Night Alive* (City Theater), *The Freedom of the City* (Irish Rep), *The Mountains Look Different* (Mint Theatre Company), *Juno and the Paycock* (Irish Rep), *Observe the Sons of Ulster Marching Towards The Somme* (PICT Classic Theatre), *Blood* (The Cell). Film & Television includes: "DieRy" (Mailer Tuchman Media) Jennifer Gelfer Dir., "Inside Me" (Mailer Tuchman Media) Matthew Berkowitz Dir., "The Second Sun" (Michael Mailer Films) Jennifer Gelfer Dir., "Public Morals" (TNT) Edward Burns Dir., Produced by Steven Spielberg. Representation: Harden Curtis Kirsten Riley (HCKR Agency). [ciaranpatrickbyrne.com](http://ciaranpatrickbyrne.com)



**ROBERT CUCCIOLI** (*Cornelius "Con" Melody*) Broadway: *Jekyll & Hyde* (Tony nomination, Drama Desk, Outer Critics Circle, FANY and Chicago's Joseph Jefferson Awards), *Les Misérables*, and *Spider-Man: Turn Off the Dark*. Off-Broadway last season Robert was seen in *The White Devil* and as Caesar in *Caesar & Cleopatra*. Other favorite Off-Broadway credits include: *And The World Goes 'Round* (Outer Critics Circle Award), *Rothschild and Sons* (London's Offie Award Nom.), *Jacques Brel Is Alive And Well And Living In Paris*, and *Snow Orchid*. Robert has performed at such notable Regional Theatres as The Guthrie, Paper Mill Playhouse, The Shakespeare Theatre of NJ, The Shakespeare Theatre of DC (Lorenzaccio - Helen Hayes Award Nom.), the McCarter Theatre, George Street Playhouse, and Ford's Theatre (1776 - Helen Hayes Award Nom.) Television: "The Sinner", "Elementary", "White Collar", "Sliders", "Baywatch", "The Guiding Light". Film: "Celebrity", "The Stranger", "The Rest of Us", "Impossible Monsters", "Columbus on Trial". [robertcuccioli.com](http://robertcuccioli.com).



**KATE FORBES** (*Nora Melody*) Irish Repertory Theatre debut. Other O'Neill: *Josie in A Moon for the Misbegotten*, at Theatre Royal, Waterford, Ireland, and the Lyric Theater, Belfast. Broadway credits include *The School for Scandal* (TheaterWorld Award),

---

---

## WHO'S WHO IN THE CAST

---

*Inherit the Wind* (with George C. Scott), *Macbeth*, and *Sight Unseen*. Off-Broadway: for TFANA: *All's Well That Ends Well*, *The Merchant of Venice* (with F.Murray Abraham, also at the RSC), *The Jew of Malta*, *Othello* (Calloway Award); *Janis Joplin in Love*, *Janis at The Village Theater*: Desdemona in *Othello* (with Liev Schreiber) for the Public; *The Entertainer*, CSC. Recent regional: *Steel Magnolias* (Heritage Theater), *Hamlet*, *Macbeth*, *Henry V*, *La Dispute*, *The Crucible* (Hartford Stage). Many others. Two tours with The Acting Company. Film/TV credits: "The Sacrament", "The Longest Ride", "Term Life", "Steel Country", "Hot Summer Nights / Mercy Street", "Law and Order", "Soaps", upcoming untitled "Marvel Project". For my father, Walter Forbes, who has a touch of the poet himself, may he rest in peace.



**MARY MCCANN** (*Deborah Harford*) is thrilled to return to Irish Rep where she performed *The Weir* by Conor McPherson. Mary is a founding member of the

Atlantic Theater Company where she has done many plays including: *On the Shore of the Wide World*, *Harper Regan* (title role), and *Bluebird* by Simon Stephens, *Ghost Stories*, *Our New Girl*, *Offices* and *Almost and Evening* by Ethan Coen and *Night Heron* by Jez Butterworth. Recent TV: "Dirty John" (upcoming), "Madame Secretary", "Elementary", "Jessica Jones" "Law and Order Special Victims Unit" (recurring), "The Blacklist", "Boardwalk

Empire"(recurring), "Person of Interest" and "A Gifted Man" directed by Jonathan Demme. Film: "The Frat Haze" (upcoming) "Can you Ever Forgive Me", "Caught" (Lifetime), "Choke", "Little Children", "Phil Spector", "It Must Be Love", "Door to Door", and more. Broadway: *The Old Neighborhood*, *Our Town* with Spalding Gray and *Search and Destroy*. Other Off-Broadway Credits include: *Oleanna* (Orpheum Theatre), Second Stage, Lincoln Center and Naked Angels.



**ANDY MURRAY** (*Jamie Cregan*) Andy appeared previously at the Irish Rep in *The Emperor Jones* and *The Seafarer*, both directed by Ciarán O'Reilly. BROADWAY:

*War Horse* at Lincoln Center. OFF-BROADWAY: *Judgment Day* at the Park Ave Armory. Regionally he's worked at the McCarter, Yale Rep, The Shakespeare Theater in DC, Centerstage in Baltimore, American Conservatory Theater in San Francisco, Berkeley Rep, The Magic Theater, California Shakespeare Theater, Seattle Rep, San Jose Rep, among others. Film and TV includes "Daredevil", "House of Cards", "The Knick", "Run All Night", "Aloft", "Wormwood", "Chicago PD", "Shades of Blue", "Bull", "The Blacklist", "Person of Interest", "Elementary", "Law and Order CI" and "Forever". He has taught acting at the Berkeley Repertory School of Theater, California Shakespeare Theater, Alameda County Juvenile Hall, and San Quentin State Prison.

---

---

---

## WHO'S WHO IN THE CAST

---

**DAVID O'HARA** (*Paddy O'Dowd*) *Juno and the Paycock*, *Three Small Irish Masterpieces*

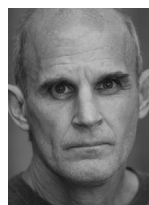


(Irish Rep), *Imperfect Love* (The Left Wing LTD), *Alone it Stands* (59E59 & First Irish Theatre Fest), *Python* (Poor Mouth Theatre & First Irish), *Within the Law* (Metropolitan Playhouse), *Richard III* (Boomerang), *Henry IV Part 1* (Extant Arts), *The Beauty Queen of Leenane* (Poor Mouth), *Who is Dan Schiller?* (LookingGlass), *Court Play* (Atlantic), *The Importance of Being Earnest* (Aisling Arts). TV: "The Tonight Show" (NBC), "Monarchs" (FX). David also works as an actor in film, commercials and voiceover.



**TIM RUDDY** (*Mickey Maloy*) *The Naturalists* by Jaki McCarrick (Soho Rep), *The Seafarer*, *The Weir*, *Prisoner of the Crown*, *The Shaughraun*, *The Yeats Project* (Irish Rep,) *Stones in his Pockets*, (Broadway Tour) *Philadelphia Here I Come!*, *The Field*, *Defender of the Faith*, *Swansong*, (IRNE best actor) *Pumpgirl*, (Manhattan Theatre Club) *The Seagull*, directed by Max Stafford Clark (The Lynne Redgrave Theatre) *The Blowin of Baile Gall*, *Rockdoves* (Irish Arts Center) *MacBeth*, *Good Evening Mr. Collins*, *Shay* (Abbey Theatre) DIRECTOR: *The Cure* at Arlene's Grocery, *After Luke/When I was God*, *For Love* by Laoisa Sexton at Irish Rep. *Beauty Queen of Leenane* (Actors

Studio). *Last Days of Cleopatra* by Laoisa Sexton (Urban Stages). *Never In My Lifetime* by Shirley Gee (Access Theater). TV/FILM Actor: *I Know This Much Is True* (HBO), *Blacklist* (NBC), *79 Parts* (Amazon), *Glenroe* (RTE 5 Seasons), *Courier Opps* (RTE), *Ballykissangel* (BBC), *Gettysburg* (TNT), *Gods and Generals* (WARNER BROS), *Making the Cut* (RTE), *WC* (INDIE) FILM Director: "Apocalypse 150", "Mikey's Lookin' For Ya", "The Robber." PLAYWRIGHT. *The International Playwrights Theater/ Cell Space Theater* (best play Origins1st Irish New York theatre festival in 2013).



**DAVID SITLER** (*Patch Riley*) David is thrilled to be back at Irish Rep working with this great Company for his hat trick having been in *Beyond the Horizon* and *Donnybrook* in the past. He has been on Broadway (*An Inspector Calls* with Rosemary Harris), National Tour (*Frost Nixon* with Stacy Keach), worked with over 16 Theatre Companies in NYC and Regionally from Maine to California in roles from Atticus to Scrooge. Recent Film credits include "Girl Boxer," "The True Ones," "Bugs And Slugs." TV Credits "Little America," "Hunters," and the game "Red Dead Redemption 2." Thanks to Ciarán and Charlotte, an amazing PSM, cast and crew, DBA and BWA and wife/actor Carolyn Popp.

---

---

---

## WHO'S WHO IN THE CAST

---



**JOHN C. VENNEMA** (*Nicholas Gadsby*) Mr. Vennema has been seen at Irish Rep in *Freedom of the City* and *Prisoner of the Crown*, on Broadway in *The Ride Down*

*Mt. Morgan*, *The Royal Family*, *Otherwise Engaged*, *The Elephant Man*, *Racing Demon*, and *Bells are Ringing* (Encores). He toured Ireland and England in the Druid Theater production of *Cripple of Inishmaan* ending at the Atlantic Theater (Drama Desk award). OFF-BWAY: *Linda*, *House and Garden*, *In Celebration*, *Terms of Endearment*, *Shadowlands* and many others. FILM: "The Cat's Meow", "City Hall", "Die Hard With a Vengeance". TELEVISION: "Boardwalk Empire", "Unbreakable Kimmy Schmidt", "House Of Cards" (recurring roles).

**EUGENE O'NEILL** (*Playwright*) (1888-1953) was born in New York City on October 16, 1888 and began writing in the early 1910s. He eschewed the melodramas and vaudeville styles of his period in favor of dramatic realism. He published his first plays in 1914, and had been awarded three of his four Pulitzer Prizes by 1928 for *Beyond the Horizon* (1918), *Anna Christie* (1920), and *Strange Interlude* (1928). In 1936 he received the Nobel Prize for Literature – the only American playwright to hold this honor. Other notable works include *The Emperor Jones* (1920); *The Hairy Ape* (1922); *Desire Under the Elms* (1924); *Mourning Becomes Electra* (1931); *Ah, Wilderness!* (1933); *The Iceman*

*Cometh* (1939); *Long Day's Journey into Night* (1941 – Pulitzer Prize 1957); *A Moon for the Misbegotten* (1943); and *A Touch of the Poet* (1942).

**CIARÁN O'REILLY** (*Director*) Favorite directing credits include: *The Weir: A Performance on Screen*, *Lady G: Plays and Whisperings of Lady Gregory*, *Dublin Carol*, *The Shadow of a Gunman*, *The Seafarer*, *The Dead*, *1904*, *Shining City*, *Off the Meter*, *On the Record*, *The Weir* (Calloway Nom.), *Banished Children of Eve*, *The Emperor Jones*, (Callaway Award, O'Neill Credo Award, Drama Desk, Drama League, and Lucille Lortel Nom.), *The Hairy Ape* (Drama Desk Drama League and Callaway Nom.), *Philadelphia*, *Here I Come!* (Drama Desk Nom). Irish Rep acting roles include *Da*, *Juno and the Paycock*, *Dancing at Lughnasa*, *Molly Sweeney*, *Candida*, *Aristocrats*, *A Whistle in the Dark*, *The Shaughraun*, and *The Irish and How They Got That Way*. He appeared in the Roundabout Theatre Company's production of *A Touch of the Poet* with Gabriel Byrne. He has appeared at the Abbey Theatre in Dublin and made his Broadway debut in *The Corn is Green*. Films include *The Devil's Own* (starring Harrison Ford), "Law & Order," "The Irish... and How They Got That Way," "Third Watch," "Bored to Death" and "The Knick." Ciarán has recently been inducted in to the *Irish America Hall of Fame* and has been awarded the Presidential Distinguished Service Award for the Irish Abroad, 2019 by President Michael D. Higgins.

---

---

---

## WHO'S WHO IN THE CAST

---

**CHARLIE CORCORAN** (*Scenic Design*) NY designs include: *Lady G*, *The O'Casey Cycle* (winner of the Henry Hewes Design Award), *The Seafarer*, *On Beckett*, *Shining City*, *The Emperor Jones* (Hewes Design Award nomination), *The Quare Land* (Origin First Irish Award), *The Weir* (Irish Rep) *Billy and Ray* (Vineyard Theatre), *Straight* (Acorn Theatre) and *The Marriage of Figaro*, *The Triumph of Love* (Juilliard). *Craving for Travel* (Peter J. Sharp Theatre), *The Last Smoker In America* (Westside Theatre), *A Perfect Future* (Cherry Lane), *The Bully Pulpit* (Beckett Theatre), *Exits And Entrances* (Primary Stages). Regional theatre designs include: *A Comedy of Tenors*, (Outer Critics Circle Award) (Cleveland Playhouse / McCarter Theatre), *Vanya & Sonia & Masha & Spike* (The Goodman Theatre), *The Barber Of Seville*, *The Marriage Of Figaro* (The McCarter Theatre), *Ma Rainey's Black Bottom*, *Absurd Person Singular*, *Noises Off* (Two River Theatre), *Without Walls* (Center Theatre Group), *The 25th Annual Putnam County Spelling Bee* (Buck's County Playhouse) *Bad Jews* (Ensemble Theatre Company/English Theatre of Frankfurt) Opera designs include: *Fidelio* (Santa Fe Opera), *Così Fan Tutte* (co-production Metropolitan Opera And Juilliard), *Don Giovanni*, *Katya Kabanova* (Juilliard) *The Turn of the Screw*, *The Flood* (Opera Columbus), *The Magic Flute*, *The Bartered Bride* (Granada Theatre, Santa Barbara), *L'Opera Seria* (Wolftrap Opera), TV designs include: "Full Frontal with Samantha Bee" (TBS), "Mozart in the Jungle" (Amazon), "Believe" (NBC), "Madam Secretary" (CBS).

**ALEJO VIETTI** (*Costume Design*) New York: Broadway's *Holiday Inn*, *The New Irving Berlin Musical*, *Allegiance* (Drama Desk Award nomination), and *Beautiful: The Carole King Musical* (also national tour, West End -Olivier Award nomination, Australia, Japan and UK tour). *Smokey Joe's Café*, *Amy and the Orphans*, *The Dance of Death*, *Storefront Church*, *The Last Sunday in June*, and *Secrets of the Trade* among others. He has designed for the Radio City Rockettes, Roundabout Theatre Company, Manhattan Theatre Club, New York City Opera, Atlantic Theater Company and Primary Stages among others. Other credits include Disney's *The Hunchback of Notre Dame* (Japan and Germany), Lyric Opera of Chicago, Minnesota Opera, Donesk Opera (Ukraine), Colorado Ballet, and the Ringling Brothers and Barnum & Bailey Circus. Regional: Alley Theatre, Goodspeed Opera, Guthrie, Hartford Stage, Paper Mill, Shakespeare Theatre, La Jolla Playhouse, Williamstown Theatre Festival, The Old Globe, among others. Recipient of the 2010 TDF Irene Sharaff Young Master Award.

**MICHAEL GOTTLIEB** (*Lighting Design*) has designed over 30 productions at the Irish Repertory Theatre, where his credits include *London Assurance*, *The O'Casey Cycle* (Henry Hewes Design Award nomination), *Bill Irwin: On Beckett*, *Woody Sez*, *Woman & Scarecrow* and *The Weir*. His other New York designs include the Broadway musical *Lysistrata Jones*, *Storyville* (York), *Major Barbara* (Pearl),

---



---

---

## WHO'S WHO IN THE CAST

---

*Signs of Life* (AMAS), *Spain* (MCC) and *Election Day* (Second Stage). Regional work includes credits at The Goodspeed, Trinity Rep, The Hangar, The Long Wharf and The Old Globe. He has an Emmy Award and several other award nominations for his work in television. Michael is a graduate of Vassar and The British & European Studies Group, London. mgld.com

**M. FLORIAN STAAB** (*Sound Design and Mix*) is a sound designer and composer based in Brooklyn, NY. Credits include: *The Library*, *Pretty Hunger* and *Teenage Dick* (Public Theater); *Uncle Vanya* (Pearl Theatre Company); *Nomad Motel* (Pittsburgh City Theatre); *Into the Breeches!* (Trinity Rep); *Winners* (Ensemble Studio Theatre); *Death of the Liberal Class* (New Ohio); *Crackskull Row* (The Cell and Irish Rep); *On Beckett* with Bill Irwin (Irish Rep); *Minor Character* (New Saloon); *A Hunger Artist* (Tank/Sinking Ship); *This Lingering Life* (Here Arts); *Mad Libs Live!* (New World Stages); *The Bonapartes* (Ars Nova); *A Bright New Boise* (Partial Comfort) and *The Suitcase Opera* (Chicago Opera Vanguard). Staab was born and raised in Germany and received his BA from Oberlin College and MFA from Krannert Center. He is an associate artist with Sinking Ship Productions and the resident sound designer at the O'Neill National Playwrights Conference. florianstaab.com

**RYAN RUMERY** (*Original Music*) is a musician, composer, and producer. He is currently scoring a documentary about Yotam Ottolenghi. His music is in the films *The Spectacular Rise*; *Fall of Paul Manafort* (Washington Post), *Afghan Cycles* (Brooklyn Film Festival 2018), *Awake: A Dream from Standing Rock* (Tribeca 2017), *How to Let Go of the World* (And Love All the Things Climate Can't Change) (Sundance 2016, HBO), and *City of Gold* (Sundance, SXSW 2015). Recent theatrical projects include *Apologia* (Roundabout), *Be More Chill* (Signature Theatre), and *Fool For Love* (Broadway). Rumery recently received the Obie for Sustained Excellence in Sound Design and Composition, and was a selected composer for the Sundance Institute of Music and Sound Design Labs at Skywalker Sound.

**ROBERT-CHARLES VALLANCE** (*Hair & Wigs*) Broadway: *Jitney*, *Come from Away*, *Amazing Grace*, *Lucky Guy*, *Little Shop of Horrors*, *Long Day's Journey*, *Play What I Wrote*, *Ma Rainey's Black Bottom*, *Our Town*, *Hollywood Arms*, *The Elephant Man*, *Dance of Death*, *Amy's View*, *The Blue Room*, *Master Class*. Resident designer at Irish Repertory Theatre, 43 Productions. Proprietor of BroadwayWigs.com. Angels of New York AngelsOfNY.com

**AMANDA QUAID** (*Dialect Coach*) Irish Rep: *The Weir: A Performance on Screen*, *The Weir*, *Banished Children of Eve*, *The*

---

---

---

## WHO'S WHO IN THE CAST

---

*Yeats Project*. Broadway: *Equus*. Off-Broadway includes *The (curious case of the) Watson Intelligence* (Playwrights Horizons, world premiere), *Cock* (Duke, US premiere), *Luck of the Irish* (LCT3, Lortel nomination), *Pericles* (Public Theater, AEA Bayfield Award), *A Public Reading of an Unproduced Screenplay About the Death of Walt Disney* (Soho Rep, world premiere), *They Promised Her the Moon* (Miranda, world premiere), *Galileo* (CSC), *The Illusion* (Signature), *The Witch of Edmonton* (Red Bull), *The Seagull* (Culture Project). Regional: La Jolla, Old Globe, Shakespeare Theatre, Barrington Stage Company, Folger Shakespeare Theatre. TV: "Bull," "I'm Dying Up Here," "Masters of Sex," "Chicago Med," "Blue Bloods," "Law & Order: SVU." Film: English (actor/director), Toys (animator/director).

**APRIL ANN KLINE** (*Production Stage Manager*) April is excited to be at one her favorite places to work— Irish Repertory Theatre. Some NYC credits include: Irish Repertory Theatre (*London Assurance*, *The O'Casey Cycle*, *Disco Pigs*, *Woody Sez*; *The Pigeon in the Taj Mahal*); Gingold Theatrical Group (*Caesar & Cleopatra*); *My Life On A Diet* with Renee Taylor at St. Clement's Theatre; Pearl Theatre Company (*A Taste of Honey*, *No Exit*); Red Bull Theatre (*Tis Pity She's A Whore*, *Dance of Death*); Naked Angels Theatre (*This Wide Night*); Ma-Yi Theatre Company (*The Romance of Magno Rubio*). Favorite regional credits include

Bay Street Theatre (*Lend Me A Tenor*, *The Mystery of Irma Vep*); Chester Theatre Company (*The Retreat from Moscow*); Long Wharf Theatre (*The Romance of Magno Rubio*). April has also done various shows with the Juilliard School and the New School for Drama drama programs. April is a proud member of Actors' Equity Association. Love to my family and Marc.

**SARAH NICHOLS** (*Video Editor*) Sarah serves as the Audience Services Manager at Irish Rep, and when live theater fell victim to the Covid lockdown, she deftly pivoted to become the theatre's in-house video editor. Beginning with interviews for the *Meet the Makers* series, Sarah then took on the increasingly complex Performances on Screen, *The Weir* and *A Touch of the Poet*, working with individual footage from each actor and set designer Charlie Corcoran's virtual backdrops to create cohesive productions. Sarah edits *The Long and The Short Of It*, Jen Waldman and Peter Shepherd's weekly podcast "for curious people". She previously worked as a stage manager for *Sleep No More*, and as a casting associate for Blue Man Group. During university, Sarah wrote and directed the immersive production *Life Is But A Dream*, staged on Governors Island with a grant awarded by NYU/Tisch, from which she holds a BFA. Sarah is proud to be part of Irish Rep's unique effort to continue to bring the joy of theater to its audiences during these strange times. Many thanks to Shannon, Ciarán, Jason, Frank, and Joe for their incredible support throughout this project.

---

---

---

## WHO'S WHO IN THE CAST

---

**DEBORAH BROWN** (*Casting*) has cast for Broadway, Off-Broadway and many of the leading regional theatres in the country. She shared an Emmy for HBO's series "From the Earth to the Moon." Other television projects include "The Days and Nights of Molly Dodd" and New York casting on "Band of Brothers." This is her 13th season casting for Irish Repertory Theatre.

**CHARLOTTE MOORE** (*Artistic Director*) Recent directing assignments include: *Love Noël: A Performance on Screen*, *Molly Sweeney: A Performance on Screen*, *London Assurance*, *Love, Noël*, *The Plough and the Stars* as part of *The O'Casey Cycle*, *On a Clear Day You Can See Forever*, *Three Small Irish Masterpieces* by William Butler Yeats, *Lady Gregory* and *J.M. Synge*. New York premiere of Brian Friel's *The Home Place*, World premiere of Larry Kirwan's *Rebel in the Soul*, *Finian's Rainbow*, The Phyllis Newman Women's Health Initiative gala, Truman Capote's *A Christmas Memory*, and *Juno and the Paycock* and *Dancing at Lughnasa*. New York stage appearances include *A Perfect Ganesh*, *Meet Me in St. Louis*, *The Perfect Party*, *Morning's at Seven*, *Private Lives* (with Elizabeth Taylor and Richard Burton), and many performances with the New York Shakespeare Festival. Ms. Moore has received two Tony Award nominations, the Outer Critics Circle Award, the Drama Desk Award, the Drama League Award, the Irish America Top 100 Irish Award, The Eugene O'Neill Lifetime Achievement Award, and the 2008 Irish

Women Of The Year Award. She is the recipient of the St. Patrick's Committee in Holyoke's John F. Kennedy National Award, and has thrice been listed as one of the "Top 50 Power Women" in *Irish America Magazine*. Charlotte was named "Director of the Year" by *The Wall Street Journal* in 2011. Charlotte has recently been inducted into the *Irish America Hall of Fame* and been awarded the Presidential Distinguished Service Award for the Irish Abroad, 2019 by President Michael D. Higgins.

**IRISH REPERTORY THEATRE** Founded by Ciarán O'Reilly and Charlotte Moore, Irish Repertory Theatre opened its doors in 1988 with Sean O'Casey's *The Plough and the Stars* and is now in its 31<sup>st</sup> Season. Irish Rep is currently the only year-round theatre company in North America devoted to bringing Irish and Irish-American works to the stage. Recognized with the Jujamcyn Theatres Award, a special Drama Desk Award for "Excellence in Presenting Distinguished Irish Drama," the Lucille Lortel Award for "Outstanding Body of Work," and a 2013 Outer Critics Circle Special Achievement Award in recognition of 25 years of producing outstanding theatre. Irish Rep presents the very best in Irish theatre, from the masters to the new generation of Irish and Irish-American writers who are transforming the stage. Located in the heart of New York's Off-Broadway community, Irish Rep offers an engaging perspective on the Irish and their unique contributions to the world of drama.

---

## IRISH REP ADMINISTRATIVE STAFF

Artistic Director ..... Charlotte Moore  
Producing Director ..... Ciarán O'Reilly  
General Manager ..... Lisa Fane  
Director of Development ..... Jason Smoller  
Director of Marketing & Digital Strategy .....  
Frances Howorth  
Associate Director of Development ..... Seth Bauer  
Art Director & Marketing Manager ..... Muireann Lalor  
Company Manager ..... Anna Rhoads  
Audience Services Manager ..... Sarah Nichols  
Production & Events Coordinator ..... Jason Brubaker  
Marketing Associate ..... Gráinne Kelly  
Box Office Associate ..... Dan Bass  
Literary Manager ..... Kara Manning  
Marketing Intern ..... Isabel Thomas  
Development Intern ..... Megan Savage  
Legal Counsel ..... James O'Malley  
..... Jeremy Keele, Kathryn Smith,  
..... Carmine D. Boccuzzi, Leigh Giroux  
Accountants ..... PKF O'Connor Davies, LLP.  
Human Resources/Payroll ..... Paychex  
Insurance ..... AJG Risk Management  
Bank ..... M&T Bank  
IT Consultants ..... Red Paladin  
Financial Services ..... Patricia Taylor

## PRODUCTION STAFF

Technical Director ..... Brandon Cheney  
Video Editing ..... Sarah Nichols  
Make-up Artist ..... Joe Delude  
Production Coordinator ..... April Kline  
Assistant Director ..... Liam Prendergast  
Associate Costume Designer ..... Gale Baldoni  
Uileann Pipes ..... Bruce Foley  
Production Assistant ..... Simon Geaney

## PRESS REPRESENTATION

Matt Ross Public Relations  
Matt Ross, Nicole Capatasto,  
Liz Lombardi, Claire Wojciechowski

## FOLLOW #IRISHREPONLINE



FACEBOOK.COM/IRISHREP



@IRISH\_REP



@IRISHREP



@IRISHREP

## BOARD OF DIRECTORS OF IRISH REPERTORY THEATRE

Kathleen Begala, *Chair*  
Tom Cashin  
John DellaNoce  
Eoin Duane  
John Duane  
Clementina Santi Flaherty  
Rich Flood

John Gardiner  
Edward Greene  
Marc P. Hanrahan  
Michael Keogh  
Cornelius V. Kilbane, Jr.  
Simon Lorne  
Ellen McCourt, *Chair Emeritus*

Charlotte Moore  
Colleen Murphy  
Dore Normille  
Katie Rustum O'Neill  
Brendan O'Reilly  
Ciarán O'Reilly  
Nancy Woodruff





## A Letter from the Directors

When we walked out the door of Irish Rep on Sunday, March 15th, we had just completed 4 weeks of rehearsals for Eugene O'Neill's *A Touch of the Poet*. The sets had been built, the costumes fitted, the lighting and sound designs were set, there was a healthy advance in ticket sales and we said to the cast, "See you on Tuesday!"

We still had optimism despite the dark clouds gathering. We couldn't possibly see a world where months of exploration into the dark complicated mind of Eugene O'Neill was not to be seen. Of course the show was going on.

That night the Mayor announced the closing of the schools and the city began to shut down. Our cast hunkered down and some scattered to remote destinations around the country and world. The costumes remained on the racks and as weeks became months, the desire to fulfill the mission to fill those 19th century clothes became stronger. By virtue of science, we thought it possible. We called our cast and designers who responded with a resounding YES!

None of it was easy. It was invasive into the lives of the homes of the actors being filmed, it taxed the designers to re-imagine their work to the new hybrid, it was an intense pressure cooker for our staff to navigate the new paths to bring it to your screen, and midnight oils burned to the last ember as the final edits took place.

Throughout it all, we held a vision of Eugene O'Neill sitting in his study at Tao House, wracked with the tremors of Parkinson's disease and barely able to hold his pencil, he poured his heart and soul into the story of the Melody family. It's the least we can do to turn on the light.

Love,

CHARLOTTE MOORE, ARTISTIC DIRECTOR

CIARÁN O'REILLY, PRODUCING DIRECTOR

# CONTRIBUTORS TO IRISH REPERTORY THEATRE

## IRISH REPERTORY THEATRE MEMBERS

(as of July 7, 2020)

*Irish Rep gratefully acknowledges the following individuals for support received this year.*

*Although space limitations allow us only to list donors of \$250 and above, we thank our supporters at all levels.*

### \$20,000 AND ABOVE

Hon. Elizabeth Frawley  
Bagley\*  
Bank of America\*  
Kathleen Begala &  
Yves-André Istel\*  
John DellaNoce\*  
Tina Santi Flaherty\*  
John Gardiner\*  
Loretta Brennan  
Glucksman\*  
Simon Lorne\*  
Ellen McCourt\*  
Charlotte Moore  
Colleen Murphy\*  
Denis O'Brien\*  
Pernod-Ricard\*  
Katie Rustum O'Neill &  
Peter O'Neill\*  
Nancy Woodruff\*

### ANGELS

#### (\$10,000 - \$19,999)

Anonymous  
Mitch Appel\*  
Jane & Raphael Bernstein  
Jeanne & Paul Carroll  
Tom Cashin\*  
Kathleen & Michael Dowling  
Roma Downey\*  
John F. Duane\*  
Rebecca & Eoin Duane\*  
Paul Ford\*  
John Greed\*  
Edward Greene\*  
Marc Hanrahan\*  
Michael Keogh\*  
Kaori Kitao  
Keith & Twinkler Mason\*  
Thomas Moore\*  
Ruth Moran\*  
William Murphy\*  
Dore Normile\*  
Sheila & Brendan O'Reilly\*  
Joseph & Mary Lou  
Quinlan\*  
Virginia Richards  
Gary Stern  
Tourism Ireland\*  
The Ireland U.S. Council\*  
The Ireland Funds  
America\*  
Bill & Denise Whelan  
Donald & Barbara Zucker\*

### DIRECTORS

#### (\$5,000 - \$9,999)

Sheila Broderick  
BarbaraLee Diamondstein-  
Spielvogel\*  
Margaret Duffy, *in memory*  
*of Brandon Quinn*  
Herbert & Cynthia Fields  
Joseph Hassett  
James Hodge

Jim & Pat Houlihan  
Swoosie Kurtz  
Jane Anne Majeski, *In*  
*Memorian Vivian Majeski*  
LouAnn & John  
McGlinchey\*  
Enid Nemy\*  
Colleen Noall  
Andrew O'Brien  
Patricia & Robert O'Brien  
Aine Donovan & Gregory L.  
Snyder\*  
Joan O'Meara Winant

### PRODUCERS

#### (\$2,500 - \$4,999)

Kay Allaire\*  
David Begala\*  
Roger Berlind  
Judge Frederic Block\*  
David & Deirdre Brennan\*  
Mary Cahill  
Chris Carolan & Vernon  
Bauer  
Cheryl DellaRosa  
Jeffrey Dubiner\*  
W. Leslie Duffy  
Bart Friedman  
Paul and Behinn Gallen  
Estate of Edith Greenwood  
Molly K. Heines & Thomas  
J. Moloney\*  
Stephanie Holmes  
Robert & Sally Huxley  
Adrian Jones  
Deborah & Rocco  
Landesman\*  
Franklin Lowe and Anne  
Anderson\*  
Patricia & Bernard  
McElhone  
Nancy & W. Scott McLucas  
Dianne Mundy\*  
Wendy O'Neill  
Kathleen & Peter Quinn  
Matthew Ricciardi  
David Richenthal  
Bernard Schleifer\*  
John Shay\*  
Stephanie Shuman  
Daniel Snow  
Dennis Swanson  
Jackson Toby  
Kathryn Wagner  
Elsie Walker\*  
Mary Wallace  
Peter & Barbara Wright  
Nina O'Leary Zilkha &  
Michael Zilkha

### BENEFACTORS

#### (\$1,000 - \$2,499)

Anonymous (5)  
Allen Alford  
Lani Azenerg

Meg McKeon Baker &  
James Baker  
Marc Baron  
Constance P Beaty  
Chris Begala\*  
Rosemary & Jim Bell  
Nancy & Bruce Bent  
James & Marie Biggs  
Jonathan Blackman  
Carmine Boccuzzi  
Richard & Miriam Bossard  
Joseph Brophy  
Elizabeth AR Brown  
Garrett & Jeanette Buckley  
Edmund Byrnes  
Joseph Cahalan\*  
Isabelle & Charles Carroll  
Linda Carson\*  
Orlagh Cassidy\*  
Michael Castellon  
Tina Chen  
Fred Chernoff  
John Chiti\*  
Kathleen Chopin  
Michael Clarke  
Rufus Collins\*  
Patrick Comaskey\*  
Jerry Crawford  
Susan Crowley  
John Cunningham  
Clare Curtin  
Roy & Dorothy Dailey\*  
Daniel Daly  
Martin Daly  
Beth Ann Day\*  
Jack Deacy\*  
Barbara and Ben Denihan  
Jamie deRoy\*  
James Dinneen  
Patrick Dorton\*  
Dot Dot Productions LLC  
Kevin Downes  
Tom & Linda Dupree  
James Dwyer  
Linda & James Ellis  
Michael Emerson  
William Farkas  
Soloviova Faruolo  
Lorna Fenenbock\*  
Eleanor Fink  
Derek Flanagan  
Joan Flanigan  
Barbara Fleischman  
Lori & Edward Forstein  
John & Marianne Fouhey  
Candice & John Frawley  
Helen & Henry Freedman\*  
Maggie Gallagher\*  
Joan & Robert Galliven  
Marguerite Gary  
Robert Gender  
Patricia Geoghegan  
Fred Gilbert  
John Glover  
Andrew Gordon

Joyce Gordon  
Barbara Gottlieb  
Arthur Grayzel & Claire  
Lieberwitz  
David Green  
Francis J. Greenburger\*  
Amy Grissom  
Jan Guifarro  
Carol & Steve Gutman  
Jennifer Hand & Thomas  
Tierney  
Kevin J. Hanratty  
Nicole Harman  
Catherine Harnett\*  
Ben Harte  
Ellen & James Hillman\*  
Mark & Jennifer Hughes  
John & Dorothy Hurley\*  
Bill Hutton\*  
Dana Ivey\*  
Kathleen & George Jamison  
Philip M. Jelly Jr  
Ken Jenkins  
Robert Wood Johnson  
Foundation  
Patricia & William Jordan  
Roselle & Brian Wynne  
Kaltner  
Nina Kaufelt\*  
Joan Kedziora\*  
Jim Keegan  
Ellis Kelleher & Eamonn  
Quinn  
Shaun Kelly\*  
Ed Kenney\*  
Kathleen & Timothy  
Kennon\*  
Neal Kilbane\*  
Larry Kirwan  
Howard Kitt  
Ann and Burt Korelitz\*  
Nina Korelitz Matza\*  
Jeremy Kramer\*  
Judith Krupp  
Lillian M. & Monte Lang  
Keith Langworthy  
Riki Kane Larimer\*  
Angela Lansbury Shaw  
Thomas Leane  
Francois & Calleen  
Letaconnoux\*  
Jeanne Levan  
Beth & Jim Lewis  
Laurianne Listo\*  
Kai Lui\*  
Mary Lumet  
Bertil Lundqvist\*  
Joan & Robert Lunney  
William Lynch  
Charlene & Gary  
MacDougal  
Michelina MacGregor  
Doug & Donna Macmillan  
Marotti  
Brian & Florence Mahony

# CONTRIBUTORS TO IRISH REPERTORY THEATRE

- Edward Malone  
 Alan Mark  
 Elizabeth Marks & Harry Ostrer  
 Melanie Mason  
 John Mastrobattista  
 John McCarrick  
 James McCarthy & Magda Ghanma  
 Thomas McCool  
 Helen McGrail  
 Anne McGuinness  
 Gerard Meagher  
 Bethany & Robert Millard\*  
 Giel Millner  
 Valerie & Ned Monaghan  
 Michael & Ginger Montel  
 James Morgan\*  
 Paul Muldoon & Jean Hanff Korelitz  
 Barry Munger  
 Kane and Martin Nussbaum  
 Peter O'Connell\*  
 James O'Malley\*  
 Sylvia & Michael O'Neill  
 Peter & Marilyn Oswald  
 Perry Pazer  
 Rose Petrocelli  
 Maryellen Phelan  
 Thomas Rafferty  
 Gustavus Remak Ramsay  
 Carol Maria Rehhauser  
 Jonathan Reilly  
 Michael T. Ridge\*  
 Liz Robbins\*  
 Nancy Roskind  
 Rose & Laura Schwally  
 Thomas & Cynthia Sculco\*  
 Ruby T. Senie  
 Julia Shea  
 Terry & Bill Sheridan  
 Zachary & Susan Shimer  
 Pamela Singleton  
 Barry Skovgaard  
 Genevieve Brunet Smith  
 Matthew Patrick Smyth  
 Ted Smyth  
 Lenore Steiner  
 Patricia Stockhausen & Michael Emmerman  
 Irene Stockton  
 Maurice Sullivan  
 Lisa Mary Sullivan\*  
 Martha Swift  
 Jim & Norma Tallon  
 William Thurston  
 Michael Tierney  
 Suzzanne Umland  
 Mindy Ulst  
 Esther Misted & Mark Villamar  
 Joan Madden Wilson\*  
 Warren & Marcia Wood  
 Brann Wry  
 Burton & Susan Zwick  
 Ellen Tenenbaum & Craig Zimmerman
- Michael Adams  
 Janice Akerhielm  
 Oliver & Brenda Anderson  
 Andrea Anson  
 Anthony Argentino  
 Jerry Auld  
 Patricia Bailey  
 Mr. & Mrs. Robert L. Barrett  
 Dan Barry & Mary Trinity  
 Francis Barry  
 Andrea Battel  
 Charlotte Baumgartner  
 Kathleen Baynes  
 Mary & Sherwin Belkin  
 Andrew Benson\*  
 Hillel M. Bennett  
 Maureen Bennett  
 Scott Bennett and  
 Valentina Bondarenko  
 Maureen Bentley  
 George & Marilyn Berger  
 Norman & Alice Berkowitz  
 Eileen Bermingham  
 Fritz Beshar  
 Clint Best  
 Jane Biberman  
 Lewis Black  
 Alisa Blacklaw  
 Sheila & Clarence Blair  
 C.M. Bournazos  
 Gail Boyle  
 Kathleen & Edmond Brady  
 Loretta & Dennis Brady  
 Peg Breen  
 Barry Breitburg & Kathryn S. Gallagher  
 Shelaghmichael Brown  
 Frances & Vincent Browne  
 Ann Burgmeyer  
 Dr. Linda L. Byington  
 Pat Calderwood & Ken Rolston  
 Daniel Campbell  
 John Campion & Andrea Waxman  
 Carl Capista  
 Charles Carberry  
 Judy Cash  
 Carolyn Chave  
 Samantha Chen & Campbell Langdon  
 Thomas & Oonagh Christie  
 Cornelius J. Clancy  
 Kathleen Clinton & Peter Corl  
 Robert Clougherty  
 Barrett Cobb & Harry Saltzman  
 Irene & Richard Coffman  
 Joshua Cohen  
 Harry Conway  
 Kevin Confoy\*  
 Julie Connelly  
 Paula Connolly  
 Bruce Cooper  
 Daniel Cooper  
 Jeremiah Corkery  
 Linda Corradina  
 Kathleen Corrigan  
 Matthew Costabile  
 Michael D. Kunkel &
- L. Henry Cox  
 Chris & Liz Craig  
 Phillip Craig  
 Patricia Crowley  
 Patrice & Dennis Cuddy  
 Tom Curran  
 Chris Daley  
 Catherine Deane  
 Declan Denehan  
 David desJardins  
 Adriana Dilance  
 Jack DiMonte  
 Ann & Dan Dipietro  
 Robbi & George Doherty  
 Maralyn Dolan  
 Lorna Doran & Bruce Breimer  
 Richard & Jennie Dorn  
 Laura Egelhoff  
 Carolyn Ellis  
 Maureen Engelbert  
 David Fallon  
 Jim Fauvell  
 Aine Fay  
 Marty Feinman & Amy Cooney  
 Karl Finegan\*  
 Peter Finn  
 Jackie Fisher  
 Lyn & Brendan Fitzgerald  
 John & Geraldine Fitzgerald  
 Corine & Thomas Fitzpatrick  
 Thomas Fitzpatrick  
 Blair Flicker  
 Michael & Noreen Flugger  
 Charles Forma  
 Kathleen & Mike Forman  
 Kay Foster  
 Katherine Freedman\*  
 Burt Freeman  
 Aileen & Brian Gallagher  
 Christian Gannon  
 Mortin Garbus  
 Loraine Gardner  
 Carol Geisler  
 Mary & Alec Gerster  
 Thomas & Elizabeth Gillett  
 Don Ginty  
 Ken Glickfeld  
 Lillian Gola  
 Ellen C. Goldberg  
 Harry Goldman  
 Margaret Goodman  
 Albert Gorman  
 Marianne & Brian Grady  
 Rebecca Grafstein\*  
 Michelle Griffin  
 Marie Grimm  
 William Grogan  
 Paul Groncki & Michelle Tokarczyk  
 Carol Groneman  
 David & Phyllis Grossman  
 Kathy & Sonny Hagendorf  
 Phillip Hanvy  
 Mary Hardin  
 Mary Harrigan  
 Elizabeth M. Harrington, Esq.  
 Mary Harrison  
 Martin Hason
- John & Kathy Heaney  
 Reily Hendrickson  
 Patricia Hennessey\*  
 Patrick Hennigan  
 Barbara Hoffman  
 Ann E. Hohenhaus\*  
 Peter J. Hooper  
 Marv Hopkins  
 Peter J. Horan  
 Katharine Houghton  
 Rita Houlihan  
 Zeljko Ivanek  
 Jeanette Ivers  
 Peter Entin & Barbara Janowitz  
 Margaret & Bill Kable  
 Sarah Kagan  
 Jordan Katz and Ellen Schleifer  
 Michael Keane  
 Kathleen Kearns  
 Coco Kee & Kevin Goldstein  
 Edward Kelleher  
 Mary Beth Kelly  
 Deirdre Kelly  
 Pamela Kendall  
 David Kingsley  
 Ellen Kirch  
 Arlene Kraat  
 Stewart & Donna Krevolin  
 Stephanie Lebowitz  
 Jonathan Lee  
 Beverly Leffers  
 Gina Maria Leonetti  
 Douglas Liebhafsky  
 Patricia Lilley  
 Teresa & Thomas Lilly  
 Paul Lvovsky  
 Maura Lynch  
 Gail Magaliff  
 Paul Mahood  
 Tom Majewski  
 Timothy Malone  
 John Michael Maloney  
 Jean & Bob Markley  
 Peggy Marks  
 Kevin Maroney  
 Harry Martin  
 Adam E. Max  
 Gerald McCarthy  
 Joan McCarthy  
 Keith McCarthy  
 Sophie McConnell  
 Brian McDonough  
 Diana & Malachy McCourt  
 Anne & Robert McGoldrick  
 Brenda McGowan & Elaine Walsh  
 Stephen & Jeanne McGrath  
 Judith & Raymond McGuire  
 William & Jude McLane  
 Susan McMartin\*  
 Lynne McNavich  
 James McNeil  
 Jerry & Judy Mermel  
 John & Susan Michel  
 Lowell Miller\*  
 Helen Mills  
 Ann Miner  
 Kimberly Mitchell  
 Donald Monahan

## PARTNERS

(\$500 - \$999)

Anonymous (5)

# CONTRIBUTORS TO IRISH REPERTORY THEATRE

- Doreen Monahan  
The Monahan Clan  
Colin Moran  
Michael & Kerry Morelli  
Donna & John Moroney  
Thomas & Lara Mullarkey  
Daniel Muller  
MaryAnne Muller  
Monica Mullin  
Diane Mundy  
Eugene & Mary Murphy  
Dan Napolitano\*  
Margaret M Neckles\*  
Ilona Nemeth & Alan Quasha  
Julie Netterre  
Mary Jane & John Nolan  
Martin Novack  
Kevin O'Brien  
Janet O'Connor  
Jane & Robert O'Dowd  
Niall O'Gara & Geraldine Collins  
Brigit O'Meara  
Anne O'Neill  
James O'Neill  
Miriam O'Regan Roman  
Charles & Priscilla Osewalt  
Jim O'Sullivan & Margaret Molloy  
Robert O'Sullivan\*  
Sean O'Sullivan  
Daniel Smith & Laura Palantone\*  
George Pappas  
Terry Davis Perl  
Richard Phalon  
Roger Pollock  
Kristin Powers  
Marilyn & Thomas Preston  
Barbara Price  
Matthew Quirk  
Jonathan D. Rabinowitz  
Mary Anne Ramer\*  
Linda Raphael  
Maria & Steve Reed  
Stephen Reid  
Anne M & James M Reilly  
Gretchen Rennell Court\*  
Joseph J. Roach  
Jonathan Roberts  
Sarajane Robinson Senturia  
Renee Roelle  
Marjorie Rosenthal  
James Rowan  
Barbara Rudd  
Catherine Ryan  
Alfred Sainato  
Robert Salerno  
Karen & Charles Schader  
William Schaefer  
Jesse Schaffer  
Lou and Angela Schimenti  
Stephen Schneider  
Henry Schroeder  
Rachel & William Schultz  
Donna Sethi  
Bart Sheehan  
Patricia Sheehan  
Alannah Sheerinn  
Mary Sheerin  
Kyle Shepard
- Maureen Sheridan  
E. Michael Shine  
Tod Short  
Kim Siegfried  
Kathleen Hillman  
Simmons\*  
Charles Slivinski  
Carol B. Smith  
David & Laura Smith\*  
Mary H. Smith  
J. Smith-Cameron & Kenneth Lonergan  
Patricia Sochor  
Stephen Sondheim  
Kathleen & David Spiegler  
Barry Spielvogel  
Ann Stanton  
Michael & Beth Stanton  
Todd Stockdale  
Richard Strother  
Aline Sullivan  
Charles Sullivan  
Robin Sullivan  
Michael Sweeney  
Carole Teller  
Edward R. Tierney  
Mary Tierney\*  
Tom Travers  
Meredith Trede & Brad Kenyon  
Michelle & David Tucker  
Judith & William Turner  
Mimi Turque Marre  
Loretta M Ucelli\*  
Vera Vento-Jacobs\*  
Kelly Victor  
Caroline Vigneron  
Melissa Vogel Brown  
Sandra Wagenfeld  
Kathleen Walsh & Gene Bernstein  
Linda Walton  
Jennifer Warren  
Richard & Linda Warren  
Patricia M. Weeks  
Hillary Weisman  
Karen Weissberger  
Michael Weller  
Deborah Whitmore  
Ronan Wicks  
Erick Williams  
Richard Wool  
Susan Yarnell  
Diane Yu & Michael Delaney  
Patricia Zervos  
Joe Zimmel  
Dina Zuckerberg
- ASSOCIATES**  
**(\$250 - \$499)**  
Anonymous (6)  
Debo Adegbile  
Kim & David Adler  
Miriam Adelman  
Arthur & Wilma Aeder  
Dean Alfange  
Patricia Armstrong  
Conor Bagley  
Jonathan Bank & Katie Firth  
Edward Barlow
- Judith Barlow  
Betsy Barbanell  
John Bastable  
Andrea Battel  
Martha Battles  
Seth Bauer & Elysa Marden\*  
Jim Bay  
Georgia Beach  
Ceclia Beirne  
Maureen Bentley  
Donal Bermingham  
Ellen Birger  
Ellen Blocher  
Arlo Blocher  
Dympna Bowles & Donal Farley  
Nathan Brandt Jr.  
Thomas Brandt  
David Brennan  
Patrick Brennan  
Patricia Bresee  
Iris Brest  
Susan Brody  
Kevin & Virginia Brooks  
Judie Brophy  
Michael & Robin Bullington  
Charles & Barbara Burger  
Sidney J. Burgoyne & Jack W. Batman  
Byrne/Luddy Families  
Maureen & James Callanan  
Paul & Lisa Canty  
Carolyn Capstick Meehan  
Daniel Casey  
Neil Casey & Agnes Cavallari  
Timothy Casey  
Constance Christensen  
Cornelius Clancy  
Robert & Isobel Clark  
Sarah Clarkin  
Kathleen Cobb  
Lewis Cole  
Edwina & Robert Conrad  
Patricia Conran  
Mary Kay Conwell  
Linda Cronin  
Michael Crowley  
Jackie Cummings  
Glenn Cunningham  
Robert E. Curley  
Helen & Denis Curran  
Francesca Curtin  
Jeanne Curtis  
John & Ellen Curtis  
Jeff Dailey  
Franco Dalessandro  
Blythe Danner  
Jack Deacy  
Mary Deady  
David Dean  
Aileen Denne-Bolton  
Kathleen DeVito  
Adriana Dilancea  
Joanne C. Dillon  
Rita Dillon  
Margaret Dixon  
Nancy M. Donahue  
Robert Donnalley  
James Donnelly  
Charles Donohue
- Beverly & Charles Donohue  
Mary Donovan  
James Doran & Ricelle Grossinger  
John & Sara Doran  
Richard & Jennie Dorn  
Sally Dorough  
Irene & James Dougherty  
Arden Down  
Charles R. Drew  
Kevin & DG Duffy  
Mary Ellen & James Duffy  
Patricia Dugan  
Emily Dunlap  
Don & Sheila Dunphy  
Michael Ely  
Paul Engh  
Peter Faber  
Judith Falci & Rosalind Steinberg  
Mary Falk  
Darragh Farrell  
Kathleen A. Fay  
Stephen J. Fearon  
Emer Featherstone  
William & Joan Felder  
Stephen Fields  
Steve Finley  
Robin Fitelson  
Anne & John Fitzgerald  
Jean Fitzgerald  
Dawn Fitzpatrick  
John Fitzpatrick  
Robert Flaherty  
Joanne Flanagan  
Michael G. Fleming  
Sarah Foote  
Priscilla Ford-Frein  
Joan Fortune  
David Frankel  
Richard Frankel & Kathleen Clark  
Steven Friedman  
John Friedman  
Lynnel Garabedian  
Michael Garber  
Mary & Edward Gaylor  
Edward I. Geffner  
Adrian Gill  
John Gillespie  
David & Suellen Globus  
Joe Godfrey  
Eleanor Goldhar & John Vollmer  
Harriet & Jonathan Goldstein  
Lydia M. Gordon  
Clare Gorman  
Thomas Gormley  
Marc & Susan Gottridge  
Aidan Synnott & Elizabeth Grayer  
Amy Greer  
John Gregory  
Fran & Richard Habib  
Michael Hagerman  
Robert Hall  
Patricia Halligan  
Martha Hally  
Kathleen Halvey  
Joseph Parenteau & Eleanor Hamill



# CONTRIBUTORS TO IRISH REPERTORY THEATRE

Cliona Hamilton  
 Dede Hapner  
 Kay Haran  
 Mary Hardi  
 Sheldon Harnick  
 Delphi Harrington  
 James Harrington  
 Mary R. Hardin\*  
 James Harrington  
 Cheryl & Edward Healton  
 Margaret M. Healy  
 Marybeth Hegedus  
 Georganne Heller  
 Michael Herko  
 Judith & Jack Herschlag  
 Sigrid Hes  
 Neil Hickey  
 Elizabeth Hitz  
 Mary Hoar, *in memory of  
 Ira Goldman*  
 Frank Hoffmann  
 Jen Hogan & Scott Murphy  
 Mary Jean & Cecil Holland  
 Mary Horner  
 Dan Houser  
 Andre Hurni  
 Karen Howlett  
 Geraldine Hughes  
 Alan Jones & Ashley Garrett  
 Maxine Isaacs  
 Penny Jackson  
 Gale & Jim Jacobsohn  
 Guy Johnson  
 Simon Jones  
 Julie Jordan  
 Julia & Esther Judge  
 Joan Kaefer  
 Ann Kappler  
 Mary Keane  
 Kevin J. Kearins  
 Peter Keil  
 Edna Kelleher  
 Breda McGovern & William  
 Kelleher  
 Margaret Kelly  
 Mickey & Geraldine Kelly  
 The Kelsey Family  
 Eileen Kennedy  
 William Kennedy  
 Janet Keyes  
 Shirley & Dennis Kluesener  
 Agnes Koczka  
 James J. Kolb  
 Caroline & Marc Kornutik  
 Carol & Sanford Krieger  
 Miodrag Kukrika  
 Robb Lady  
 Cynthia & Anthony Lamport  
 Colin Lane  
 Patrick Lardieri  
 Katherine Laupot  
 Russell Lawyer  
 Paula Lazeski & Marc  
 Olivieri  
 Ann Leddy  
 Mary B. Leddy  
 Maribel Ledezma-Williams  
 Maurice DuPont Lee  
 Harding Lemay  
 Mina Levin  
 Mary Levine  
 Tess Lewis

Jeffrey Lew  
 Mary Shannon Little  
 Laurence S. Lockridge  
 Michael Lonergan, IV  
 Suzanne Lopez  
 Joseph & Linda LoSchiavo  
 Leonard Lowell  
 Dayna Lucas  
 Tami Luby & Ed Purce  
 John P. Lyden, MD  
 Attracta Lyndon  
 Jane & Bill Macan  
 Lucille Maffia  
 Lynne Malina  
 Veronica Mallozzi  
 Patricia Malone  
 Florence Mannion  
 Kathleen McCabe  
 Mary Jane & George  
 McCartney  
 Maura & John McCormack  
 John McDonagh  
 Andrew McDonough  
 Katherine McDonough &  
 Mark Dichter  
 Erin McElhinney  
 William McElroy  
 Molly McEnery  
 Diane McEnroe  
 Mary E. McGeady  
 Patricia McGhee  
 Linda McGillicuddy  
 Michael McGinnis  
 Patricia McGivern  
 Andrew & Judith McGowan  
 Carolyne McGuire  
 Peggy McGuire  
 Eileen McInerney  
 Francis McInerney  
 Kathleen McKeever  
 Helen McMahon  
 Nancy McMahon  
 Terrence McNally  
 Karen McQuiston  
 Marian Mearon Conneely  
 Deborah Meek  
 Martin Meisel  
 Julie Meyer  
 Frances Milberg  
 Judith Miller  
 Myra Miller  
 Courtney Mitchell  
 Juan Montoro  
 Terence & Elise Moran  
 Edward & Eileen Morgan  
 Mary Jo Morgan  
 Patrick Morgan  
 Frank Morra  
 Jean & Louis Morrell  
 Janet Moschetta Bell  
 Robert Moss  
 Laura Mosso  
 Deirdre Mullane  
 Richard Murphy  
 Kevin Murray  
 Marilynn Scott Murphy  
 Kate Murray  
 Kevin Murray  
 Amy Musher  
 Arlene Nadel & Richard  
 Hamner  
 Charles Nash

James Nash  
 Carole Newcombe  
 Marietta O'Brien  
 Kathy Rose O'Brien  
 John & Mary Anne  
 O'Callahan  
 Seamus O'Cleireacain  
 Geraird O'Ciardhubhain  
 Jerry & Ellen O'Connell  
 Eileen O'Connell  
 Frederica O'Connor  
 Edward O'Dea  
 Adele O'Grady  
 Kevin O'Mealy  
 Colin O'Neill  
 Elizabeth O'Neill  
 Peter & Carmel O'Reilly  
 Kevin O'Rourke  
 Patricia O'Shea  
 Mary O'Sullivan  
 Leslie Ogan  
 Helene Pahl  
 Eugene Papowitz  
 Jeanne & Ron Parke  
 Carole Pesner  
 Pfizer Foundation  
 Nancy Phillips  
 Joseph Picciano  
 Morris M. Podolsky  
 Carol Prendergast & Andy  
 Greenberg  
 Ms. Felice Proctor  
 Olive Crone & Dave Prouty  
 Marcia & John Purcell  
 Frances Qualter  
 Brendan Quinn  
 Ita Rahilly  
 Barry Reed  
 Marcia Reidy  
 Margaret Reilly  
 Tria Reuss  
 Barbara Reynolds  
 Charles Rich  
 Nigel W. L. Richmond,  
*in memory of Ronald O.  
 Jacobson*  
 Michael Rigsby  
 Joseph J. Roach  
 Kathleen Roberts  
 Lynn Roddy  
 Lysa Rohan  
 Caroline & John Romans  
 James & Emily Rowan  
 James Rowley  
 Marianne Rutter  
 Mary D. Ryan  
 Anne Nucci-Sack & Peter  
 G. Sack  
 Michael Salvatore  
 Jacinta Orlando & Gus  
 Samios  
 John Savage  
 Laura Scanlon  
 Janet Kane Scapin  
 Elizabeth & Richard  
 Scarlata  
 Sherri & David Schmidt  
 Peter Schrag  
 Michael Schussler  
 David Schuster  
 Stephen & Miriam  
 Schwartz

James M. Scott  
 Joseph Sgammato  
 Carole Shaffer-Koros  
 Susan Shanks  
 Lorraine Shanley  
 John J. Sheehy  
 Elizabeth & John Shelley  
 Lee Sheppard  
 Gretchen Siebel  
 John Simon  
 Maureen Sladek  
 Caryl & John Slater  
 Melanie Sloan  
 Anthony Smith  
 Karen Smith  
 Kevin Smith  
 Thomas Smith  
 Rich Soja  
 Monroe Sonnenborn  
 Margaret Spandonis  
 David Staller  
 M. Jane Stanicki  
 Joanne W. Stavrou  
 Walter Stewart  
 Bob Greene & Dianne  
 Stillman  
 Quint Studer  
 Kitty Sullivan  
 Larry Sullivan  
 Michael Sullivan  
 Nancy Sussman  
 William Sutton  
 Patricia Sweeney  
 Vincent Tarasovis  
 Susan Tarrance  
 Joseph Taylor  
 Roxanne Taylor  
 Kenneth & Jean Telljohann  
 Susan Tirschwell  
 George Tsandikos\*  
 Howard Tucker  
 Mollie Tucker  
 Judith & William Turner  
 Alfred Uhry  
 Martha Van Hise  
 Jan Van Meter  
 Linda Vaughan  
 John Verdon  
 Sandra Wagenfeld  
 Susan Wagner  
 Daniel & Judith Walkowitz  
 James & Patricia A. Walsh  
 Cynthia Wainwright  
 Joan Waricha  
 Jan Warner  
 Louise & Daniel Weisz  
 Janet West  
 Frances Wiener  
 Helen Williams  
 Tony Walton  
 Leatrice Wolf  
 G. Vaughan Wortman  
 Lori-Ann Wynter  
 Robert H. Yunich

# CONTRIBUTORS TO IRISH REPERTORY THEATRE

## CAMPAIGN FOR A PERMANENT HOME

Although limited space in this program only allows us to list donations of \$1,000 and above, we gratefully acknowledge all contributors to our capital campaign. Every gift brings us one step closer to completing the acquisition of our facilities and securing a permanent home for Irish Repertory Theatre.

### \$1,000,000 AND ABOVE

Francis J. Greenburger  
Time Equities, Inc.  
Office of the Mayor of New York,  
Bill de Blasio  
Office of Manhattan Borough  
President, Gale A. Brewer  
New York City Council,  
Speaker Corey Johnson  
City of New York  
Department of Cultural Affairs,  
Commissioner Tom Finkelpearl

### \$100,000 TO \$999,999

The Booth Ferris Foundation  
Charina Endowment Fund  
Empire State  
Development Corporation  
Department of Foreign Affairs,  
Emigrant Support Programme &  
the Consulate General of Ireland  
Irish Department of  
Arts, Sports, & Tourism  
New York State Dormitory Authority  
New York State Office of Parks,  
Recreation & Historic  
Preservation  
Clementina Santi Flaherty  
Anita Jaffe  
Frank & Ellen McCourt  
Susan & Zachary Shimer  
Genevieve Brunet Smith

### \$25,000 TO \$99,999

Anonymous  
Kathleen Begala & Yves-André Stel  
Irving & Jane Brown  
The Robert Sterling Clark  
Foundation  
Howard Gilman Foundation  
Assembly Member  
Richard Gottfried  
Marc & Ashley Hanrahan  
James & Ellen Hillman  
The Hyde & Watson Foundation  
The Anna Maria & Stephen Kellen  
Foundation, Inc.  
W. Scott & Nancy McLucas & the  
One World Foundation  
Janet & LeRoy Neiman  
Thomas J. Moran &  
Mutual of America  
Brendan & Sheila O'Reilly  
Joe & Mary Lou Quinlan  
The Estate of Geraldine E. Rhoads

Daniel & Joanna Rose  
Patricia Smith  
Michael & Marjorie Stern  
The Dorothy Strelsin  
Foundation, Inc.  
The Michael Tuch Foundation, Inc.  
The Xerox Foundation

### \$10,000 TO \$24,999

Anonymous (2)  
Martha & Thomas G. Armstrong  
Bruce & Nancy Bent  
David & Deirdre Brennan,  
*in honor of Vincent P. Brennan*  
Loretta Brennan Glucksman  
Sheila Broderick  
Wendy Davis,  
*in memory of James M. Brennan*  
John & Anne Dockery  
Patrick J. Hennigan  
The Gilder Foundation  
Joan Kedziora, MD  
Keith & Diane Langworthy  
John & Kay McEnroe  
John McMartin  
Katherine Mosby,  
*in memory of Suzanne Mosby*  
Charlotte Moore  
New York State Council on the Arts  
Mrs. Lawrence O'Brien  
William & Nancy O'Hagan  
Ciarán O'Reilly & Jennifer Essen  
Susan Steiger

### \$5,000 TO \$9,999

Anonymous  
Monique & Paul Abel  
The American Ireland Fund  
Rene-Pierre & Alexis Azria  
Virginia Brody  
James & Bridget Cagney  
Mary Cahill  
Ann & Richard Carr  
The Thomas & Agnes Carvel  
Foundation  
James & Oona Clare  
James S. Beauregard Dineen  
Lawrence & Karen Doyle  
Peter Doyle  
Eleanor Fink  
Paul Ford  
David & Patricia Goodrich  
Rebecca & Laurence Grafstein  
William J. Hamilton, Jr.  
Lola Jaffe

Jake's Saloon  
Patricia & William Jordan  
William Karatz  
Derek & Mary Keaveney  
Jim & Karen King  
Suzanne Mados  
Brian & Florence Mahony  
Anthony & Patricia Mazzone  
Brian & Rosemary McAllister  
Carolyn & Gerry McGrath  
Jeanne & Steve McGrath  
Mollie Schnoll  
Kathe Mull & Connor Smith  
Mary Ellen Murphy &  
Henry Cavanna  
Lawrence O'Brien III  
Walter R. O'Neil  
Judy & Hal Prince  
Peter A. & Kathy Quinn  
Robert Savage & Nanette Lepore  
Thomas & Cynthia Sulco  
Jean & Kenneth Telljohann  
Jay Tunney  
Jerry Wade  
The Lila Wallace Acheson  
Theatre Fund  
Joan Waters  
The Donald & Barbara Zucker  
Foundation

### \$1,000 TO \$4,999

Anonymous  
Stephen Alexopoulos  
Allen Alford  
Kay Allaire  
Robert Barrett  
Christina Clancy Allison  
Oliver & Brenda Anderson  
The Arthur Foundation  
Brad & Amy Ball  
Herbert A. Bennett Arnhold &  
S. Bleichroeder  
George & Marilyn Berger  
William Block  
Ray & Mary Brady  
Robert Burton  
James & Mary Callanan  
Robert & Joan Campbell  
Paul & Jeanne Carroll  
Anthony & Joan Cavanna  
Joyce Chelberg  
Tina Chen  
Kevin Collins  
Vincent & Joan Comiskey  
J. Walter Corcoran

# CONTRIBUTORS TO IRISH REPERTORY THEATRE

(as of February 10, 2020)

## CAMPAIGN FOR A PERMANENT HOME

Edna Craddock	Kaori Kitao	Peter & Carmel O'Reilly
John Cullen	Max Klimavicius	The Paulazzo Family
Catherine G. Curran	Norma Langworthy	Ellen Peckham
Steve & Maggie Dixon	Terence & Rita Lennon	Andras & Imelda Dardis Petery
Alexis Doyle	Thomas Leonard	Charlotte Quaintance
Joyce Doyle	Martin Lewis & Diane Brandt	Catherine Rinaldi
James Duffy	The Frederick Loewe Foundation	Leslie & Curtiss Roach
Joan & William Felder	Kathleen & Edward Ludwig	Ellen M. Rose,
Herbert & Cynthia Fields	Frank & Mary Macchiarola	in memory of Reginald Rose
Evelyn Finn	John Maguire	Rosalie Sayles
Barbara Fleischman	Jane A. Majeski	Charles & Karen Schader
Charles Forma	John & Vivian Majeski	Margaret M. Sharkey
Lori & Edward Forstein	Edward Malone	Melvin Silverman
Roger & Marion Gilbert	Raoul Mancini	Kathleen H. Simmons
Joyce Gordon	James & Ellen Marcus	Edgar O. Smith
Amy Greer & Mark Murphy	Peggy Marks	Rich Soja
Teresa & Jay Grimm	Judith & David Marrus	Helen Spear
Mr. & Mrs. Albert Gurney	Margaret McConnell	Lisa Sullivan
The Haley Foundation	Bernard & Patricia McElhone	Martin & Antoinette Sullivan
Diane Hawes	John & Sarah McGinty	Dennis Swanson
Thomas Hayden	Ned & Valerie Monaghan	Laurence Tishler
Michael & Laura Higgins	Marty Murray,	Bernadette Toomey
Barbara Hultay	Murray & Josephson, CPA's	Don & Rosemary Travis
Mr. & Mrs. Robert Huxley	Ed & Alexandra Napier	Albertus Van Den Broek &
Dana Ivey	Colleen Noall	Pat Duffy Van Den Broek
John Joyce	David P. Nolan	Lorraine & Jack Walker
Julia Judge	Prudence O'Connor Neubert	Francis H. Williams
Tom & Valerie Kennedy	Jeanne & John M. O'Connor	Andrew Xu & Timothy Iverson
Cornelius V. Kilbane, Jr.	Michael & Sylvia O'Neill	Bob & Joanne Yunich

(as of October 21, 2020)

## FOUNDATION, CORPORATE & GOVERNMENT SUPPORT

*Irish Repertory Theatre's work would not be possible without public funds provided from the New York City Department of Cultural Affairs with support from Mayor Bill de Blasio, Cultural Affairs Commissioner Tom Finkelpearl, New York City Council Members Corey Johnson and Daniel Dromm, and Manhattan Borough President Gale A. Brewer, as well as support from New York State, including Governor Andrew Cuomo, and Assembly Members Michael Cusick and Richard N. Gottfried.*

### **\$50,000 AND ABOVE**

Howard Gilman Foundation  
The Department of Foreign Affairs and the  
Consulate of Ireland in New York  
City of New York, Department of Cultural Affairs  
The Shubert Foundation

### **\$20,000 AND ABOVE**

Anonymous  
The American Ireland Fund\*  
Mutual of America\*  
The Harold and Mimi Steinberg  
Charitable Trust  
New York State Council on the Arts

### **\$10,000 AND ABOVE**

Northern Ireland Bureau,  
British Council Northern Ireland, and the  
Arts Council of Northern Ireland  
Pernod Ricard USA\*  
The Lucille Lortel Foundation  
The Fan Fox and Leslie R. Samuels Foundation

The Michael Tuch Foundation  
The Dorothy Strelsin Foundation, Inc.\*  
The Waldman Foundation

### **\$5,000 AND ABOVE**

Aer Lingus  
The Axe-Houghton Foundation  
The Gladys Kriebel Delmas Foundation  
The GHR Foundation  
Obediah Fund of the Coastal Community  
Foundation  
The Billy Rose Foundation, Inc.  
Tourism Ireland\*

### **\$1,000 AND ABOVE**

The Actors' Equity Foundation  
The Corymore Foundation  
The George Mead, Jr. Foundation  
The Lambs Foundation  
The Rodgers and Hammerstein Foundation

*\*Includes support of Irish Rep's Annual Gala*