

IRISH REPERTORY THEATRE

Little Gem

BY ELAINE MURPHY

DIRECTED BY MARC ATKINSON BORRULL

A PERFORMANCE ON SCREEN



#IRISHREPOONLINE

IRISH REPERTORY THEATRE

CHARLOTTE MOORE, ARTISTIC DIRECTOR | CIARÁN O'REILLY, PRODUCING DIRECTOR

A PERFORMANCE ON SCREEN

LITTLE GEM

BY **ELAINE MURPHY**

DIRECTED BY **MARC ATKINSON BORRULL**

STARRING **BRENDA MEANEY, LAUREN O'LEARY**
AND **MARSHA MASON**

scenic design
**MEREDITH
RIES**

costume design
**CHRISTOPHER
METZGER**

lighting design
**MICHAEL
O'CONNOR**

sound design & original music
**RYAN
RUMERY**

sound mix
**M.FLORIAN
STAAB**

edited by
**SARAH
NICHOLS**

production coordinator
**ARTHUR
ATKINSON**

production coordinator
**REBECCA
MONROE**

casting
**DEBORAH BROWN
CASTING**

press representatives
**MATT ROSS
PUBLIC RELATIONS**

general manager
**LISA
FANE**

TIME & PLACE

North Dublin, 2008

Running Time: 90 minutes, no intermission.

SPECIAL THANKS

Irish Repertory Theatre wishes to thank Henry Clarke, Olivia Marcus, Melanie Spath, and the Howard Gilman Foundation.

Little Gem is produced under the SAG-AFTRA New Media Contract.

THE ORIGINAL 2019 PRODUCTION OF *LITTLE GEM* ALSO FEATURED PROPS BY SVEN HENRY NELSON AND SHANNA ALISON AS ASSISTANT STAGE MANAGER.

THIS PRODUCTION IS MADE POSSIBLE WITH PUBLIC FUNDS FROM THE NEW YORK STATE COUNCIL ON THE ARTS, THE NEW YORK CITY DEPARTMENT OF CULTURAL AFFAIRS, AND OTHER PRIVATE FOUNDATIONS AND CORPORATIONS, AND WITH THE ASSISTANCE OF THE MANY GENEROUS MEMBERS OF IRISH REPERTORY THEATRE'S PATRON'S CIRCLE.

WHO'S WHO IN THE CAST



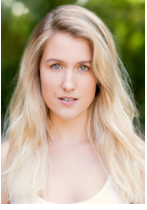
MARSHA MASON (*Kay*) has received an Outer Critics Circle Award and 4 Academy Awards nominations for her roles in the films “The Goodbye Girl,” “Cinderella Liberty,” “Only When I Laugh,” and “Chapter Two.” She has been the recipient of 2 Golden Globe Awards for her film roles and an Emmy Award nomination for her role on “Frasier”. Her credits include “The Middle”, “The Good Wife”, “Madam Secretary”, and “Grace & Frankie”. Broadway roles include *Impressionism* with Jeremy Irons, *Steel Magnolias*, *The Night of the Iguana*, *The Good Doctor*, *King Richard III*, and *Cactus Flower*. Off-Broadway she co-starred in the world premiere of Terrence McNally’s *Fire and Air* at Classic Stage. Regionally she has starred in *All’s Well That Ends Well* at Shakespeare Theatre in Washington, DC, *A Doll’s House* at ACT in San Francisco, *Arms and The Man* at Old Globe Theatre in San Diego, and *Watch on the Rhine* at Arena Stage in Washington, DC. She has directed *Chapter Two* and *Steel Magnolias* at the Bucks County Playhouse, the first female *An Act of God* with Paige Davis at the Arizona Theatre Company, and the world premiere of Tennessee Williams’ *Talisman Roses* starring Amanda Plummer at the Tennessee Williams Festival in Provincetown, Mass. Marsha was Associate Director with Jack O’Brien for the Roundabout Theater’s production of *All My Sons* recently on Broadway. In

summer 2019, Marsha starred in Irish Rep’s acclaimed production of *Little Gem* and directed a reading of *The Man Who Came to Dinner* with Brooke Shields and Walter Bobbie at the Bucks County Playhouse and WP Theater in NYC. Most recently, she directed *Jericho* for New Normal Rep, and is thrilled to be working with the Irish Rep again!



BRENDA MEANEY (*Lorraine*) Tom Stoppard’s *Indian Ink* (Roundabout); *Incognito* (Manhattan Theatre Club); *Party Face* (New York City Center), The Neil Labute Short Play Festival (The Davenport), *The Mountains Look Different* and *The New Morality* (The Mint Theatre). Regional: *The Hard Problem*, *Indian Ink*, *Venus in Fur* (American Conservatory Theatre); Pulitzer prize-winner Martyna Mayok’s *Queens* (La Jolla Playhouse); *Caucasian Chalk Circle* and Caryl Churchill’s *Owners* (Yale Repertory Theatre); *And a Nightingale Sang...* (Westport Country Playhouse); Lewis Black’s *One Slight Hitch* (Wellfleet Harbor Actors Theatre). Foreign credits include *Basin* (Abbey Theatre Studio/Anu Productions); *The Way of the Language: Voices from the War on Terror* (Project Arts Centre, Dublin); and *Biography of Bernie Ward* (Samuel Beckett Theatre, Dublin). Television/Film: “For Life” (ABC), “Hell on Wheels” (AMC), “Love/Hate” (Radio Teilifís Éireann), “Under the Waves” and the forthcoming “There’s Always Hope.” Education: MFA, Yale School of Drama.

WHO'S WHO IN THE CAST



LAUREN O'LEARY (*Amber*) *Little Gem* at Irish Rep in the Summer of 2019 was Lauren's Off-Broadway Debut. Foreign theatre includes *The Awkward*

Years (The Other Room Theatre) for which she won the Stage Debut Award for Best Actress in a Play. Charlotte in *Meatballs* (Hampstead Theatre), Pegeen Mike in *Playboy of the Western World* (Richard Burton Company/Theatr Clwyd), Pip in *Albatross* (Richard Burton Company/Paines Plough), Portia in *The Merchant of Venice* (Royal Welsh College of Music and Drama), Natalya in *Three Days in the Country* (RWCMD), *Animal Farm* (Samuel Beckett Theatre). Training: B.A Drama & Theatre Studies, Trinity College Dublin. M.A Acting, The Royal Welsh College of Music & Drama.

ELAINE MURPHY (*Playwright*) Elaine Murphy's debut play, *Little Gem*, premiered at the Dublin Fringe Festival in 2008, playing to packed audiences during its sellout run and picking up the Fishamble New Writing Award and a nomination for Best New Play at the Irish Times Theatre Awards before transferring to Edinburgh's Traverse Theatre, where it won the 2009 Carol Tambor Best of Edinburgh Award. Her second play, *Ribbons*, was commissioned by the Abbey Theatre for *The Fairer Sex*, a series of short plays from leading female playwrights, followed by *Shush*,

also an Abbey Theatre commission which premiered on the mainstage in 2013 for a six-week run. She has worked with Painsplough and Draiocht Theatre for The Dublin Theatre Festival and her radio play *Ma* won the PJ O'Connor Award on RTE, Radio 1 and a Zebbie from the Irish Writers Guild. She is currently adapting the Maeve Binchy novel *Circle of Friends* for the stage which will premiere at The Gaiety Theatre, Dublin in 2022.

MARC ATKINSON BORRULL (*Director*) is a director from Ireland and Catalonia, based between NYC and Dublin. Recent work includes the critically-acclaimed *Beginning by David Eldridge* (Gate Theatre, Dublin), *Hamlet* starring Ruth Negga (St. Ann's Warehouse - Associate), *Wall* (Druid Theatre), *Outlying Islands* by David Greig (Connelly Theater, NYC & Intl tour), *Last Night in Inwood* by Alix Sobler (Signature Theater Ford Studio, NYC), *All Hell Lay Beneath* (Irish Times Cultural Highlight of the Year) and *Ethica: Four Shorts* by Samuel Beckett which was presented in the Residence of the Irish President for International Human Rights Day as well as in Sofia, Bulgaria & the Happy Days Festival, Enniskillen. Marc is Artist-in-Residence at The Gate Theatre Dublin, where he is developing a new adaptation of *Children of the Sun* by Matthew Minnicino. Marc's Associate Director credits include working with Anne

WHO'S WHO IN THE CAST

Bogart; The Old Vic & Lincoln Center; BAM; and Ivo van Hove at Toneelgroep Amsterdam. MFA: Columbia University. SDC Member. marcatkinsonborrull.com

MEREDITH RIES (*Scenic Design*) *Where the Mountain Meets the Sea* (Humana Festival) *Love in Hate Nation* (Two River Theater) *House Plant* (NYTW Next Door), *No One Is Forgotten* (Rattlestick Playwrights Theatre), *Bonnie's Last Flight* (NYTW Next Door), *Cute Activist* (The Bushwick Starr), *Sweeney Todd* (Curtis Opera), *Heartland* (Geva Theater Center), *Lost Laughs* (Merrimack Repertory Theater), *Once the Musical* (Weston Playhouse), *The Temple Bombing* (The Alliance Theater), *Peer Gynt and the Norwegian Hapa Band* (Ma-Yi Theater Company/ARTNY), *Hamlet* (Yale Repertory Theater). Associate design: *Hadestown* (Rachel Hauck, Broadway), with David Zinn: *The SpongeBob Musical* (Broadway), *The Waverly Gallery* (Broadway, 2018), *Amelie the Musical* (Broadway, 2014-2017). Meredith is a graduate of the Yale School of Drama and the University of Chicago. Meredithries.com

CHRISTOPHER METZGER (*Costume Design*) Christopher Metzger is a Brooklyn-based designer working in theatre, opera, and dance. Recent designs include *Sweat* (Mobile National Tour, Public Theater), *Harlequin & Pantalone* (Dorrance Dance / NY City Center), *LIFE SUCKS.*, *Happy Birthday*,

Wanda June, Enemy of the People (Wheelhouse Theater), *La Traviata* (Philharmonia of New York), *West Side Story* (Sioux City Symphony), *Tosca* (Opera Roanoke), *Sehnsucht* (Jack). His work with the Cherylyn Lavagnino Dance Company has been seen regionally and internationally including Beijing International Contemporary Dance Festival, Indianapolis City Ballet, Kaatsbaan International Dance Center, American Dance Guild. Associate credits include *Sweat* (Broadway), *Falsettos* (First National Tour), The Public Theatre, Santa Fe Opera, Theatre for a New Audience, Glimmerglass Opera. MFA, NYU. Proud member Local USA 829. christophermetzgerdesign.com.

MICHAEL O'CONNOR (*Lighting Design*) Irish Rep: *Lady G, Pump Girl, Yes! Reflections of Molly Bloom, Little Gem, Two by Friel, Off the Meter, On the Record, The Pigeon in the Taj Mahal, It's a Wonderful Life, A Celebration of Harold Pinter, My Scandalous Life.* NYC: #CRWN (The Apollo Theater,) *Imagining Madoff* (Theatre Row), *Long Run* (Skirball Center), *Star Spangled* (AADA), *Hal and Bee* (59e59), *Ibsanity* (The Pope Theater), *Loveless Texas* (Sheen Center), *Gregorian* (Soho Rep), *Monte Cristo* (Urban Stages), *This is Mary Brown* (La Mamma). Regional: The Fulton Theater, Kennedy Center, Penguin Rep, Fringe Arts Philadelphia, 7 Angels Theater. Dance: BAM, NY City Center, The Joyce, Abbey Theatre Dublin, The Kitchen, NYLA. Michael

WHO'S WHO IN THE CAST

is the resident lighting designer for New Light Theater Project, AADA NYC, and Tere O'Connor Dance.

RYAN RUMERY (*Original Music and Sound Design*) is a musician, composer, and producer. He is currently scoring a documentary about Yotam Ottolenghi. His music is in the films “The Spectacular Rise and Fall of Paul Manafort” (Washington Post), “Afghan Cycles” (Brooklyn Film Festival 2018), “Awake: A Dream from Standing Rock” (Tribeca 2017), “How to Let Go of the World (And Love All the Things Climate Can't Change)” (Sundance 2016, HBO), and “City of Gold” (Sundance, SXSW 2015). Recent theatrical projects include *Apologia* (Roundabout), *Be More Chill* (Signature Theatre), and *Fool For Love* (Broadway). Rumery recently received the Obie for Sustained Excellence in Sound Design and Composition and was a selected composer for the Sundance Institute of Music and Sound Design Labs at Skywalker Sound.

M.FLORIAN STAAB (*Sound Mix*) is a sound designer and composer based in Brooklyn, NY. Credits include *The Library*, *Pretty Hunger*, and *Teenage Dick* (Public Theater); *Uncle Vanya* (Pearl Theatre Company); *Nomad Motel* (Pittsburgh City Theatre); *Into the Breeches!* (Trinity Rep); *Winners* (Ensemble Studio Theatre); *Death of the Liberal Class* (New Ohio); *Crackskull Row* (The Cell and Irish Rep);

On Beckett with Bill Irwin (Irish Rep); *Minor Character* (New Saloon); *A Hunger Artist* (Tank/ Sinking Ship); *This Lingering Life* (Here Arts); *Mad Libs Live!* (New World Stages); *The Bonapartes* (Ars Nova); *A Bright New Boise* (Partial Comfort) and *The Suitcase Opera* (Chicago Opera Vanguard). Staab was born and raised in Germany and received his BA from Oberlin College and MFA from Krannert Center. He is an associate artist with Sinking Ship Productions and the resident sound designer at the O'Neill National Playwrights Conference. florianstaab.com

SARAH NICHOLS (*Editor*) Sarah serves as the Audience Services Manager at Irish Rep, and when live theater fell victim to the Covid lockdown, she deftly pivoted to become the theatre's in-house video editor. Beginning with interviews for the Meet the Makers series, Sarah took on the increasingly complex Performances on Screen, *The Weir* and *A Touch of the Poet*, working with individual footage from each actor and virtual backdrops to create cohesive productions. Sarah edits *The Long and The Short Of It*, Jen Waldman and Peter Shepherd's weekly podcast “for curious people”. She previously worked as a stage manager for *Sleep No More*, and as a casting associate for Blue Man Group. During university, Sarah wrote and directed the immersive production *Life Is But A Dream*, staged on Governors Island with a grant awarded by NYU/

WHO'S WHO IN THE CAST

Tisch, from which she holds a BFA. Sarah is proud to be part of Irish Rep's unique effort to continue to bring the joy of theater to its audiences during these strange times.

ARTHUR ATKINSON (*Production Coordinator*) is thrilled to be returning to the Irish Rep. Favorites here include *Little Gem*, *Juno* and *The Paycock* as part of The O'Casey Cycle, *On A Clear Day You Can See Forever*, *New Girl in Town*, *Take Me Along*, *Man and Superman*, among others. US Tour: *Martin Luther on Trial*; Off-Broadway: *Cagney the Musical* at The Westside Theatre; *The Great Divorce*. Other NYC credits: Director's Company, Keen Company, York Theatre, Mint Theatre, Red Bull, et al. Toured internationally in *Fiddler on the Roof* starring Topol, then Harvey Fierstein and Theodore Bikel. A proud member of Actors Equity Association. Love to Lisa!

REBECCA MONROE (*Production Coordinator*) has done a show before.

DEBORAH BROWN (*Casting*) has cast for Broadway, Off-Broadway and many of the leading regional theatres in the country. She shared an Emmy for HBO's series "From the Earth to the Moon." Other television projects include "The Days and Nights of Molly Dodd" and New York casting on "Band of Brothers." This is her 13th season casting for Irish Repertory Theatre.

CHARLOTTE MOORE (*Artistic Director*) Recent directing assignments include: *Meet Me in St. Louis: A Performance on Screen*, *Love Noël: A Performance on Screen*, *Molly Sweeney: A Performance on Screen*, *London Assurance*, *Love, Noël*, *The Plough and the Stars* as part of *The O'Casey Cycle*, *On a Clear Day You Can See Forever*, *Three Small Irish Masterpieces* by W.B Yeats, *Lady Gregory* and J.M. Synge. New York premiere of Brian Friel's *The Home Place*, World premiere of Larry Kirwan's *Rebel in the Soul*, *Finian's Rainbow*, The Phyllis Newman Women's Health Initiative gala, Truman Capote's *A Christmas Memory*, and *Juno and the Paycock* and *Dancing at Lughnasa*. New York stage appearances include *A Perfect Ganesh*, *Meet Me in St. Louis*, *The Perfect Party*, *Morning's at Seven*, *Private Lives* (with Elizabeth Taylor and Richard Burton), and many performances with the New York Shakespeare Festival. Ms. Moore has received two Tony Award nominations, the Outer Critics Circle Award, the Drama Desk Award, the Drama League Award, the Irish America Top 100 Irish Award, The Eugene O'Neill Lifetime Achievement Award, and the 2008 Irish Women Of The Year Award. She is the recipient of the St. Patrick's Committee in Holyoke's John F. Kennedy National Award, and has thrice been listed as one of the "Top 50 Power Women" in *Irish America Magazine*. Charlotte was named "Director of the Year" by *The Wall Street Journal* in 2011.

WHO'S WHO IN THE CAST

Charlotte has recently been inducted in to the *Irish America Hall of Fame* and been awarded the Presidential Distinguished Service Award for the Irish Abroad, 2019 by President Michael D. Higgins.

CIARÁN O'REILLY (*Producing Director*)

Favorite directing credits include: *A Touch Of The Poet: A Performance on Screen*, *The Weir: A Performance on Screen*, *Lady G: Plays and Whisperings of Lady Gregory*, *Dublin Carol*, *The Shadow of a Gunman*, *The Seafarer*, *The Dead, 1904*, *Shining City*, *Off the Meter*, *On the Record*, *The Weir* (Calloway Nom.), *Banished Children of Eve*, *The Emperor Jones*, (Callaway Award, O'Neill Credo Award, Drama Desk, Drama League, and Lucille Lortel Nom.), *The Hairy Ape* (Drama Desk Drama League and Callaway Nom.), *Philadelphia, Here I Come!* (Drama Desk Nom). Irish Rep acting roles include *Da*, *Juno and the Paycock*, *Dancing at Lughnasa*, *Molly Sweeney*, *Candida*, *Aristocrats*, *A Whistle in the Dark*, *The Shaughraun*, and *The Irish and How They Got That Way*. He appeared in the Roundabout Theatre Company's production of *A Touch of the Poet* with Gabriel Byrne. He has appeared at the Abbey Theatre in Dublin and made his Broadway debut in *The Corn is Green*. Films include *The Devil's Own* (starring Harrison Ford), "Law & Order," "The Irish...and How They Got That Way," "Third Watch," "Bored to Death" and "The Knick."

Ciarán has recently been inducted in to the *Irish America Hall of Fame* and has been awarded the Presidential Distinguished Service Award for the Irish Abroad, 2019 by President Michael D. Higgins.

IRISH REPERTORY THEATRE

Founded by Ciarán O'Reilly and Charlotte Moore, Irish Repertory Theatre opened its doors with Sean O'Casey's *The Plough and the Stars* and is now in its 32nd Season. Irish Rep is currently the only year-round theatre company in North America devoted to bringing Irish and Irish-American works to the stage. Recognized with the Jujamcyn Theatres Award, a special Drama Desk Award for "Excellence in Presenting Distinguished Irish Drama," the Lucille Lortel Award for "Outstanding Body of Work," and a 2013 Outer Critics Circle Special Achievement Award in recognition of 25 years of producing outstanding theatre. Irish Rep presents the very best in Irish theatre, from the masters to the new generation of Irish and Irish-American writers who are transforming the stage. Located in the heart of New York's Off-Broadway community, Irish Rep offers an engaging perspective on the Irish and their unique contributions to the world of drama. In May of 2020, Irish Repertory Theatre began presenting full-length digital productions filmed during the COVID-19 pandemic, welcoming new audiences from around the globe.

IRISH REP ADMINISTRATIVE STAFF

Artistic Director Charlotte Moore
Producing Director Ciarán O'Reilly
General Manager Lisa Fane
Director of Development Jason Smoller
Director of Marketing & Digital Media Natalie Ault
Associate Director of Development Seth Bauer
Art Director & Marketing Manager Muireann Lalor
Company Manager Anna Rhoads
Audience Services Manager Sarah Nichols
Production & Events Coordinator Jason Brubaker
Marketing Associate Gráinne Kelly
Box Office Associates Dan Bass, Brittany Coyne
..... Amanda Loth
Marketing Intern Julia Corbett
Development Intern Megan Savage
Legal Counsel James O'Malley
..... Jeremy Keele, Kathryn Smith,
..... Carmine D. Boccuzzi, Leigh Giroux
Accountants PKF O'Connor Davies, LLP.
Human Resources/Payroll Paychex
Insurance AJG Risk Management
Bank M&T Bank
IT Consultants Red Paladin
Financial Services Patricia Taylor

PRODUCTION STAFF

Technical Director Brandon Cheney
Editor Sarah Nichols
Production Coordinator Arthur Atkinson
..... Rebecca Monroe
Production Assistant Simon Patrick Geaney

PRESS REPRESENTATION

Matt Ross Public Relations
Matt Ross, Nicole Capatasto,
Liz Lombardi, Claire Wojciechowski

FOLLOW #IRISHREPONLINE



FACEBOOK.COM/IRISHREP



@IRISH_REP



@IRISHREP



@IRISHREP

BOARD OF DIRECTORS OF IRISH REPERTORY THEATRE

Kathleen Begala, *Chair*
Tom Cashin
John DellaNoce
Eoin Duane
John Duane
Clementina Santi Flaherty
Rich Flood

John Gardiner
Edward Greene
Marc P. Hanrahan
Michael Keogh
Cornelius V. Kilbane, Jr.
Simon Lorne
Ellen McCourt, *Chair Emeritus*

Charlotte Moore
Colleen Murphy
Dore Normille
Katie Rustum O'Neill
Brendan O'Reilly
Ciarán O'Reilly
Nancy Woodruff





A Letter from the Directors

Sometimes the title says it all.

Little Gem is the perfect name for this seminal work by Elaine Murphy on three generations of Irish women living under one roof.

In the Summer of 2019, when the world was free and the air was fresh, three actresses appeared on the stage of Irish Repertory Theatre and embodied those roles.

We sat in green plush seats in the dark and witnessed how they lived their lives – through births and deaths and mended hearts. We watched how they propped each other up with tough love and outstretched arms.

We took for granted the ordinary conditions where they embraced this support and came out the other side.

After a year, when so many families were cruelly isolated from their children and grandchildren, we now revisit their stories through a new lens that speaks of the sheer necessity of human contact.

As we ease our way back, we recognize these truths anew and are all the stronger for it.

Love,

CHARLOTTE MOORE, ARTISTIC DIRECTOR

CIARÁN O'REILLY, PRODUCING DIRECTOR

CONTRIBUTORS TO IRISH REPERTORY THEATRE

IRISH REPERTORY THEATRE MEMBERS

(as of April 22, 2021)

Irish Rep gratefully acknowledges the following individuals for support received this year. Although space limitations allow us only to list donors of \$250 and above, we thank our supporters at all levels.

UNDERWRITERS

\$20,000 AND ABOVE

Kathleen Begala &
Yves-André Istel*
Jeanne & Paul Carroll
Kathleen &
Michael Dowling
Tina Santi Flaherty*
John Gardiner*
Loretta Brennan
Glucksman*
Debby & Rocco
Landesman*
Simon Lorne*
Ellen McCourt*
Colleen Murphy*
Katie Rustum O'Neill &
Peter O'Neill*
Mary Lou &
Joseph Quinlan*
Nancy Woodruff &
Mark Lancaster*

The Diamonstein-
Spielvogel Foundation*
Margaret Duffy, *In*
Memoriam Brandon
Quinn
Herbert & Cynthia Fields
Joseph Hassett
Swoosie Kurtz
Cornelia Long
LouAnn & John
McGlinchey*
Wendy O'Neill
Joan O'Meara Winant
Kathleen & Peter Quinn
The Rubin-Ladd
Foundation
Daniel Snow
Gary Stern
Kathleen Walsh &
Gene Bernstein
Nina & Michael Zilkha

Stephanie Shuman
Kathryn Wagner
Elsie Walker*
Mary Wallace
Peter & Barbara Wright
Joe Zimmel

Joanne Flanagan
Barbara Fleischman
Richard Flood
Lori & Edward Forstein
Candice & John Frawley
Joan & Robert Galliven
Robert Gender
Patricia Geoghegan
Mary & Alec Gerster
Fred Gilbert
Barbara Gottlieb
Arthur Grayzel &
Claire Lieberwitz
David Green
Francis J. Greenburger*
Amy Grissom
Kathy & Sonny Hagendorf
Kevin J. Hanratty
Nicole Harman
Ellen & James Hillman*
Mark & Jennifer Hughes
John & Dorothy Hurley*
Dana Ivey*
Kathleen &

PRODUCERS

(\$2,500 - \$4,999)

David & Deirdre Brennan*
Mary Cahill*
Fred Chernoff
Cheryl DellaRosa
Aine Donovan &
Gregory L. Snyder*
John & Marianne Fouhey
The Muriel Siebert
Foundation
Bart Friedman, in honor of
Kathleen Begala
Paul and Bebhinn Gallen
Carol & Steve Gutman
Molly K. Heines &
Thomas J. Moloney*
Stephanie Holmes
Adrian Jones
The Corymore Foundation
Franklin Lowe &
Anne Anderson*
Jane Anne Majeski,
In Memoriam Vivian
Majeski
Patricia &
Bernard McElhone
Gerard Meagher*
Patricia & Robert O'Brien
Matthew Ricciardi
The Richenthal Foundation
Nancy Roskind
Fiona & Eric Rudin
Bernard Schleifer*
Michael Schussler

BENEFACTORS

(\$1,000 - \$2,499)

Anonymous (6)
Allen Alford
Kay Allaire*
Lani Azenberg
Meg McKeon Baker &
James Baker
Mr. & Mrs. Robert Barrett
Constance P. Beaty
Paul Begala
Rosemary & Jim Bell
Nancy & Bruce Bent
James & Marie Biggs
Carmine Boccuzzi
Virginia Brody
Joseph Brophy
Elizabeth AR Brown
Garrett & Jeanette Buckley
Joseph Cahalan*
Isabelle & Charles Carroll
Michael Castellon
Tina Chen
Rufus Collins*
Susan Crowley
John Cunningham
Clare Curtin
Daniel Daly
Martin Daly
Beth Ann Day*
Jack Deacy*
Barbara & Ben Denihan
Jamie deRoy*
James Dinneen
Patrick Dorton*
Dot Dot Productions LLC
Jeffrey Dubiner*
W. Leslie Duffy
Tom & Linda Dupree
Cathy Dwyer
James Dwyer
Linda & James Ellis
Michael Emerson
Maureen Engelbert
Soloviova Faruolo
Lorna Fenenbock*
Eleanor Fink
Steve Finley
Robert Fisher
Derek Flanagan

George Jamison
Barbara Janowitz &
Peter Entin
Ken Jenkins &
Katharine Houghton
Robert Wood Johnson
Foundation
Patricia & William Jordan
Roselle &
Brian Wynne Kaltner
Janet Kane Scapin
Jordan Katz &
Ellen Schleifer
Jim Keegan
Ellis Kelleher &
Eamonn Quinn
Ed Kenney*
Larry Kirwan
Howard Kitt
Faith Krueger
The Lambs Foundation
Lillian M. & Monte Lang
Keith Langworthy
Thomas Leane
Francois &
Calleen Letaconnoux*
Jeanne Levan
Beth & Jim Lewis
Teresa & Thomas Lilly
Mary Lumet
Joan & Robert Lunney
M&T Bank*
Catherine MacDonald

ANGELS

(\$10,000 - \$19,999)

Anonymous (2)
Jane & Raphael Bernstein
Tom Cashin and
Jay Johnson*
John DellaNoce*
John F. Duane*
Rebecca & Eoin Duane*
Edward Greene*
Jim & Pat Houlihan
Michael Keogh*
Kaori Kitao
Sophie McConnell
Mutual of America*
Dore Normile*
Sheila & Brendan O'Reilly*
John Shay
The Ireland Funds
America*
EULAV Asset Management
& Value Line Funds
Donald & Barbara Zucker

DIRECTORS

(\$5,000 - \$9,999)

Hon. Elizabeth
Frawley Bagley*
Hon. Ann W. Brown
Roger Berling,
In Memoriam
Sheila Broderick
Steven & Alexandra
Cohen Foundation

CONTRIBUTORS TO IRISH REPERTORY THEATRE

Gary MacDougal
 Brian & Florence Mahony
 Edward Malone
 Elizabeth Marks &
 Harry Ostrer
 Melanie Mason
 John Mastrobattista
 John McCarrick
 James McCarthy &
 Magda Ghanma
 Helen McGrail
 Anne McGuinness
 Nancy & W. Scott
 McLucas
 Mary Melkonian
 John & Susan Michel
 Valerie & Ned Monaghan
 Michael & Ginger Montel
 Paul Muldoon &
 Jean Hanff Korelitz
 Colleen Noall
 Stephen & Aleece Nolan
 Kane & Martin Nussbaum
 Brian O'Dwyer
 James O'Malley*
 Sylvia & Michael O'Neill
 Peter & Marilyn Oswald
 Alison Fraser &
 Steven Pavlakis
 Perry Pazer
 Maryellen Phelan
 Thomas Rafferty
 Gustavus Remak Ramsay
 Carol Maria Rehhausser
 Jonathan Reilly
 Judy Rice
 Marjorie Rosenthal
 Nancy Sands
 Stanley Schiffman
 Rose & Laura Schwaly
 Thomas & Cynthia Sculco*
 Ruby T. Senie
 John Shannon & Jen Serr
 Julia Shea
 Terry & Bill Sheridan
 Zachary & Susan Shimer
 Pamela Singleton
 Barry Skovgaard
 Chris & Joanne W. Stavrou
 Lenore Steiner
 Patricia Stockhausen &
 Michael Emmerman
 Dennis Swanson
 Martha Swift
 Jim & Norma Tallon
 Kenneth & Jean Telljohann
 William Thurston
 Jackson Toby
 Melissa Vogel Brown
 Joan Madden Wilson*
 Brann Wry
 Ellen Tenenbaum &
 Craig Zimmerman
 Burton & Susan Zwick

PARTNERS
(\$500 - \$999)
 Anonymous (5)
 Oliver & Brenda Anderson
 Janice Akerhielm
 Andrea Anson
 Anthony Argentino
 Jerry Auld
 Mr. & Mrs. Robert L. Barrett
 Charlotte Baumgartner
 Kathleen Baynes
 Scott Bennett & Valentina
 Bondarenko
 X. Bernard
 Clint Best
 Lewis Black
 Sheila & Clarence Blair
 C.M. Bournazos
 Dympna Bowles &
 Donal Farley
 Gail Boyle
 Loretta & Dennis Brady
 Peg Breen
 Shelaghmichael Brown
 Frances & Vincent Browne
 Ann Burgmeyer
 Dr. Linda L. Byington
 Pat Calderwood &
 Ken Rolston
 John Campion &
 Andrea Waxman
 Carl Capista
 Judy Cash
 Thomas & Oonagh Christie
 Irene & Richard Coffman
 Mary Jo Collins
 Harry Conaway
 Julie Connelly
 Paula Connolly
 Bruce Cooper
 Daniel Cooper
 Jeremiah Corkery
 Kathleen Corrigan
 Matthew Costabile
 Chris & Liz Craig
 Phillip Craig
 Woodrow & Mary Crouch
 Helen & Denis Curran
 Wendy Curtis
 Gerard Dages
 Roy & Dorothy Dailey
 Chris Daley
 Catherine Deane
 Declan Denehan
 Adriana Dilancea
 Jack DiMonte
 Ann & Dan Dipietro
 Robbi & George Doherty
 Maralyn Dolan
 Lorna Doran &
 Bruce Breimer
 Richard & Jennie Dorn
 Jennifer Dowley
 Kevin Downes

Mitchell & Donna Drach
 Ellen Estes
 Judith Falci &
 Rosalind Steinberg
 Jim Fauvell
 Peter Finn
 Jackie Fisher
 Lyn & Brendan Fitzgerald
 Corine & Thomas
 Fitzpatrick
 John Fitzpatrick
 Thomas Fitzpatrick
 Joanne Flanagan
 Blair Flicker
 Maureen J. Flood
 Paul Ford
 Charles Forma
 Kathleen & Mike Forman
 David Frankel
 Katherine Freedman*, in
 honor of Seth Bauer &
 Elysa Marden
 Audrey Friedlan
 Burt Freeman
 David Friendewey
 John Fuhrmann
 Peter Gallagher
 Christian Gannon
 Thomas & Elizabeth Gillett
 Lillian Gola
 Ellen C. Goldberg
 Harry Goldman
 Coco Kee &
 Kevin Goldstein
 Margaret Goodman
 Anne Gordon
 Joyce Gordon
 Albert Gorman
 Marianne & Brian Grady
 Michelle Griffin
 Marie Grimm
 William Grogan
 Paul Groncki &
 Michelle Tokarczyk
 Carol Groneman
 David & Phyllis Grossman
 Jan Guifarro
 Kathy & Sonny Hagendorf
 Eileen McGinley
 Hannaford
 Phillip Hanvy
 Kay Haran
 Mary Harrigan
 Elizabeth M. Harrington, Esq.
 Mary Harrison
 Martin Hason
 Margaret M. Healy
 John & Kathy Heaney
 Patrick Hennigan
 Mary Hoar, *In Memoriam*
 Ira Goldman
 Ann E. Hohenhaus*
 Peter J. Hooper
 Rita Houlihan

Maxine Isaacs
 Zeijko Ivanek
 Michael Keane
 Kathleen Kearns
 Edward Kelleher
 Pamela Kendall
 David Kingsley
 Ellen Kirch
 Lary Kirwan
 Hamil &
 Roman Kownacki
 Arlene Kraat
 Michael D. Kunkel &
 L. Henry Cox, III
 Stephanie Lebowitz
 Beverly Leffers
 Gina Maria Leonetti
 Paul Lvovsky
 Tami Lugby & Ed Purce
 Maura Lynch
 Jane & Bill Macan
 Catherine MacDonald
 Gail Magaliff
 Paul Mahood
 Tom Majewski
 Timothy Malone
 John Michael Maloney
 Jean & Bob Markley
 Peggy Marks
 Doug & Donna MacMillan
 Marotti
 Harry Martin
 Joan McCarthy
 Patricia & Keith McCarthy
 Brian McDonough
 Diana & Malachy McCourt
 Anne & Robert McGoldrick
 Brenda McGowan &
 Elaine Walsh
 Stephen &
 Jeanne McGrath
 Judith &
 Raymond McGuire
 Susan McMartin*
 Lynne McNavich
 Jerry & Judy Mermel
 Helen Mills
 Kimberly Mitchell
 Donald Monahan
 Terence & Elise Moran
 Daniel Muller
 MaryAnne Muller
 Monica Mullin
 Dianne Mundy
 Dan Napolitano
 Julie Nettere
 Fay & Martin Novack
 Kevin O'Brien
 Jane & Robert O'Dowd
 Niall O'Gara &
 Geraldine Collins
 The O'Grady Family
 Anne O'Neill
 James O'Neill

CONTRIBUTORS TO IRISH REPERTORY THEATRE

Miriam O'Regan Roman
 Jim O'Sullivan &
 Margaret Molloy
 Terry Davis Perl
 Richard Phalon
 Roger Pollock
 Marilyn & Thomas Preston
 Matthew Quirk
 Maria & Steve Reed
 Stephen Reid
 Gretchen Rennell Court*
 Sarajane Robinson
 Senturia
 Ann Roff
 Caroline & John Romans
 Brian Ruane
 William Rudolf
 Karen & Charles Schader
 William Schaefer
 Louis Schepp
 Lou and Angela Schimenti
 Henry Schroeder
 Rachel Schultz
 Donna Sethi
 Bart Sheehan
 Patricia Sheehan
 Alannah Sheerin
 Mary Sheerin
 E. Michael Shine
 Kim Siegfriedt
 Tod Short
 Charles Slivinski
 Carol B. Smith
 Donna & George Smith
 Kenneth Lonergan &
 J. Smith-Cameron
 Patricia Sochor
 Stephen Sondheim
 Kathleen & David Spiegler
 Barry Spielvogel
 Ann Stanton
 Michael & Beth Stanton
 Marjorie & Michael Stern
 Todd Stockdale
 Larry Sullivan
 Robin Sullivan
 Carole Teller
 Brad Kenyon &
 Meredith Trede
 Michelle & David Tucker
 Judith & William Turner
 Mimi Turque Marre
 Loretta M Ucelli*
 Mindy Utay
 Frank & Mary Lou Victor
 Kelly Victor
 Melissa Vogel Brown
 Jennifer Warren
 Karen Weissberger &
 James Twohie
 Deborah Whitmore
 Ronan Wicks
 Erick Williams

Elling Williams
 G. Vaughan Wortman
 Susan Yarnell
 Diane Yu &
 Michael Delaney
 Patricia Zervos

ASSOCIATES

(\$250 - \$499)

Anonymous (6)
 Debo Adegbile
 Miriam Adelman
 Sabeth Albert
 Katherine Albertini
 Louis Alexander
 Dean Alfange
 Kelly Anlas
 Andrea Anson
 Betsy Barbanell
 Edward Barlow
 Patricia Bartles
 Sangita Baruah
 Janie Bass
 John Bastable
 Andrea Battel
 Seth Bauer &
 Elysa Marden*
 Georgia Beach
 Maureen Bentley
 Cecelia Beirne
 Louise Bender
 Thomas &
 Joanne Bintinger
 Marylouise S. Black
 Carmine Boccuzzi
 Stephen Bogardus
 Ellen Bogolub
 Bracha Nechama Bomze
 Donna & Naoise Boyle
 Kathleen & Edmond Brady
 Thomas Brandt
 James Brennan
 Susan Brody
 Kevin & Virginia Brooks
 Winsome Brown
 Michael &
 Robin Bullington
 Byrne/Luddy Families
 Maureen &
 James Callanan
 Daniel Campbell
 Maryann Campbell
 Paul & Lisa Canty
 Charles Carberry
 Mark Carey
 William Carlough
 Daniel Casey
 Neil Casey &
 Agnes Cavalari
 Henry Cavanna &
 Mary Ellen Murphy
 Charles Chapin

Michael Charles
 Constance Christensen
 Cornelius J Clancy
 Lewis Cole
 Arthur Collins
 Thorne Compton
 Melissa Connerton
 Mary Kay Conwell
 Julie Copeland
 Jo Ann Corkran
 Margaret Correa
 Myrtle Crawford
 Linda Cronin
 Patricia Cronin
 Glenn Cunningham
 Robert E. Curley
 Helen & Denis Curran
 John & Ellen Curtis
 Christine Cziko
 Jeff Dailey
 Judy Daly
 Lynne Daly
 Blythe Danner
 Jack Deacy
 Ann Deinnocentiis
 Clarence Denne
 Aileen Denne-Bolton
 Gayatri Devi
 Kathleen DeVito
 Justine Dianni
 Adriana Dilancea
 Rita Dillon
 Thomas Dillon
 Joanne C. Dillon
 Margaret Dixon
 Nancy M. Donahue
 Robert Donnalley
 Beverly &
 Charles Donohue
 John & Sara Doran
 William Doran
 Richard & Jennie Dorn
 Arden Down
 Alexis Doyle
 Thomas Dubbs
 Kevin & DG Duffy
 Mary Ellen & James Duffy
 Patricia Dugan
 Emily Dunlap
 Don & Sheila Dunphy
 Jeanne Dutton
 Frances Elfenbein
 Allyson & Michael Ely
 Paul Engh
 Mary Falk
 William Farkas
 Ann Fasano
 Emer D. Featherstone
 Joan C. Feeley
 Martin Feinman
 William & Joan Felder
 Caryl Field
 Steve Finley

Glenda Fishamn
 Robin Fitelson
 Jean Fitzgerald
 Dawn Fitzpatrick
 John Fitzpatrick
 Robert Flaherty
 Marie Flanagan
 Thomas Flanagan
 Michael G. Fleming
 Michael & Noreen Flugger
 Sean Flynn
 Sarah Foote
 David &
 Ellen Forbes-Watkins
 Priscilla Ford-Frien
 Joan Fortune
 Burke & Carol Fossee
 Richard Frankel &
 Kathleen Clark
 Steven Friedman
 John Friedman
 Lynnel Garabedian
 Michael Garber
 Sherri Garber
 Marguerite Gary
 Robert G. Gasson
 Edward I. Geffner
 Phyllis Gelfman
 Adrian Gill
 Sealy Gilles
 Gerald Glackin
 Joe Godfrey
 Eleanor Goldhar &
 John Vollmer
 Harriet & Jonathan
 Goldstein
 Lydia M. Gordon
 Clare Gorman
 Marc & Susan Gottridge
 Lynda Gould
 Amy Greer
 Robert Hall
 Martha Hally
 Kathleen Halvey
 Joseph Parenteau &
 Eleanor Hamill
 Dede Hapner
 Sheldon Harnick
 James Harrington
 Mary R. Hardin*
 Cheryl & Edward Heaton
 Marybeth Hegedus
 Georganne Heller
 Reily Hendrickson
 Patricia Hennessey*
 Michael Herko
 Judith & Jack Herschlag
 Sigrid Hess
 Neil Hickey
 William Victor Higdon
 Elizabeth Hitz
 Frank Hoffmann
 W. Michael Hogan

CONTRIBUTORS TO IRISH REPERTORY THEATRE

Mary Jean & Cecil Holland	Joseph & Linda LoSchiavo	Charles Nash	Richard Scarlata
Vicki Holleman	Leonard Lowell	Marilla Neafsey	Patricia Schoenfeld
Peter J. Hooper	Dayna Lucas	William Neeson	Blair Scribner
Thomas Houlihan	Ellen Luger	Marietta O'Brien	Lorraine Shanley
Karen Howlett	Nelson Luria	Kathy Rose O'Brien	Bart Sheehan
Geraldine Hughes	William Lynch	John &	John J. Sheehy
Timothy Hulsey	Attracta Lyndon	Mary Anne O'Callahan	Elizabeth & John Shelley
Andre Hurri	Lucille Maffia	Gearoid O'Ciardhubhain	Lee Sheppard
Robert & Sally Huxley	Karen Allen Maguire	Seamus O'Cleireacain	Gretchen Siebel
Penny Jackson	Veronica Malozzi	Jerry & Ellen O'Connell	Naomi Silverman
James Jackson	Patricia Malone	Eileen O'Connell	Kathleen Hillman
Guy Johnson	Carolyne Mandell	Frederica O'Connor	Simmons*
Karen Johnson Le Sueur	Brian Markley	Edward O'Dea	Maureen Sladek
Steven Jonas	Jean & Bob Markley	Adele O'Grady Botticelli,	Caryl & John Slater
Ronald & Frieda A. Jones	Wendy & Jeff Maurer	<i>In Memoriam</i> James C.	Genevieve Brunet Smith
Alan Jones &	Marsha Mason	Botticelli	Peter Smith
Ashley Garrett	Adam E. Max	Michael James O'Hara	Thomas Smith
Simon Jones	Patricia &	James O'Malley	Rich Soja
John P.Joyce	Anthony J. Mazzone	Kevin O'Mealy	Susan Spak
Julia & Esther Judge	Kathleen McCabe	Colin O'Neill	Eileen Stansfield
William Kable	Gerald McCarthy	Elizabeth O'Neill	Vincent Stanton
Ann Kappler &	John & Cait McDonagh	Peter & Carmel O'Reilly	Marjorie & Michael Stern
Mark Herlihy	Andrew McDonough	Michael O'Reilly	Walter Stewart
John Kedziora	Erin McElhinney	Kevin O'Rourke	Irene Stockton
Gregory & Lonni Kehoe	William McElroy	Nancy Olson	Marjorie Stuckle
Edna Kelleher	Diane McEnroe	Jeanne & Ron Parke	Quint Studer
Margaret Kelly	Mary E. McGeady	William Parry	Kitty Sullivan
Edward Kelly	John McGee	Nancy Pasley	Larry Sullivan
William Kelly	Michael McGinnis	Carole Pesner	Michael Sullivan
Kieran Kelly	Patricia McGivern	Nancy Phillips	Nancy Sussman
Timothy &	Andrew &	Leonard Pickett	Patricia Sweeney
Kathleen Kennon	Judith McGowan	Morris M. Podolsky	Jane Talcott
Thomas Kerrigan	James McGroarty	Carol Prendergast &	Vincent Tarasovis
Thomas & Rita Kerstein	Judith &	Andy Greenberg	Susan Tarrence
Anne Marie Killourhy	Raymond McGuire	Betty Prince	Jane Tate
Peter & Sharon Kissel	Carolyne McGuire	Sandra Pierson Prior	Kenneth & Jean
Shirley &	Peggy McGuire	Olive Crone & Dave Prouty	Telljohann
Dennis Kluesener	Eileen McInerney	Marcia & John Purcell	Susan Tenney
Agnes Koczka	Francis McInerney	Frances Qualter	Theodore Thelin
James J. Kolb	Rose & William McKenna	Brendan & Nancy Quinn	Susan Tirschwell
Caroline & Marc Kornutik	Gerald McNamara	Ann Quinn Walsh	Mark D. Tomasko
Carol & Sanford Krieger	Marian Mearon Conneely	Ita Rahilly	Regina Torsney-Durkin
Peter Kroll	Martin Meisel	Charles Reilly	Donald & Rosemary Travis
Miodrag Kukrika	Judith &	Margaret Reilly	Frances & Paul Turner
Robb Lady	Richard Merbaum	Tria Reuss	Judith & William Turner
Maryanne Laffin	Julie Meyer	Nigel W. L. Richmond, <i>In</i>	Loretta M. Ucelli
Mark Lamos	Frances Milberg	<i>Memoriam</i> Ronald O.	Alfred Uhry
Cynthia &	Judith Miller	Jacobson	Jan Van Meter
Anthony Lamport	Rosemary Monagan	Michael Rigby	John Verdon
Colin Lane	Juan Montoro	Kathleen Roberts	Monica Wagner
Sean Lane	Terence P. Moran	Sarajane Robinson	Susan Wagner
Peter Lang	Edward & Eileen Morgan	Senturia	Tony Walton
Patrick Lardieri	Mary Jo Morgan	Caroline & John Romans	David Wasserman
Maribel Ledezma-Williams	Frank Morra	James Rowley	Anne Widmark
Mina Levin	Jean & Louis M. Morrell	Marianne Rutter	David Williams
Mary Levine	Janet Moschetta Bell	Mary D. Ryan	Helen Williams
Jeffrey Lew	Robert Moss	Anne Nucci-Sack &	Arnold Wolf
Patricia Lewis	MaryJo Mullane	Peter G. Sack	Leatrice Wolf
Lisa Linden	Deirdre Mullane	John & Beth Savage	Marcia Wood
Barbara Lindheim	Kevin Murray	Robert Savage &	Lori-Ann Wynter
Beth Liou	Kate Murray	Nanette Lepore	Robert H. Yunich
Michael Lonergan, IV	Kevin Murray	Steven Savitz	Jayne G. Zebrowski-Maler
Suzanne Lopez	Ed Napier	Elizabeth &	Joel Zinberg

CONTRIBUTORS TO IRISH REPERTORY THEATRE

CAMPAIGN FOR A PERMANENT HOME

(as of February 10, 2020)

Although limited space in this program only allows us to list donations of \$1,000 and above, we gratefully acknowledge all contributors to our capital campaign. Every gift brings us one step closer to completing the acquisition of our facilities and securing a permanent home for Irish Repertory Theatre.

\$1,000,000 AND ABOVE

Francis J. Greenburger
Time Equities, Inc.
Office of the Mayor of New York,
Bill de Blasio
Office of Manhattan Borough
President, Gale A. Brewer
New York City Council,
Speaker Corey Johnson
City of New York
Department of Cultural Affairs,
Commissioner Tom Finkelpearl

\$100,000 TO \$999,999

The Booth Ferris Foundation
Charina Endowment Fund
Empire State
Development Corporation
Department of Foreign Affairs,
Emigrant Support Programme &
the Consulate General of Ireland
Irish Department of
Arts, Sports, & Tourism
New York State Dormitory Authority
New York State Office of Parks,
Recreation & Historic
Preservation
Clementina Santi Flaherty
Anita Jaffe
Frank & Ellen McCourt
Susan & Zachary Shimer
Genevieve Brunet Smith

\$25,000 TO \$99,999

Anonymous
Kathleen Begala & Yves-André Istel
Irving & Jane Brown
The Robert Sterling Clark
Foundation
Howard Gilman Foundation
Assembly Member
Richard Gottfried
Marc & Ashley Hanrahan
James & Ellen Hillman
The Hyde & Watson Foundation
The Anna Maria & Stephen Kellen
Foundation, Inc.
W. Scott & Nancy McLucas & the
One World Foundation
Janet & LeRoy Neiman
Thomas J. Moran &
Mutual of America
Brendan & Sheila O'Reilly
Joe & Mary Lou Quinlan
The Estate of Geraldine E. Rhoads

Daniel & Joanna Rose
Patricia Smith
Michael & Marjorie Stern
The Dorothy Strelsin
Foundation, Inc.
The Michael Tuch Foundation, Inc.
The Xerox Foundation

\$10,000 TO \$24,999

Anonymous (2)
Martha & Thomas G. Armstrong
Bruce & Nancy Bent
David & Deirdre Brennan,
in honor of Vincent P. Brennan
Loretta Brennan Glucksman
Sheila Broderick
Wendy Davis,
in memory of James M. Brennan
John & Anne Dockery
Patrick J. Hennigan
The Gilder Foundation
Joan Kedziora, MD
Keith & Diane Langworthy
John & Kay McEnroe
John McMartin
Katherine Mosby,
in memory of Suzanne Mosby
Charlotte Moore
New York State Council on the Arts
Mrs. Lawrence O'Brien
William & Nancy O'Hagan
Ciarán O'Reilly & Jennifer Essen
Susan Steiger

\$5,000 TO \$9,999

Anonymous
Monique & Paul Abel
The American Ireland Fund
Rene-Pierre & Alexis Azria
Virginia Brody
James & Bridget Cagney
Mary Cahill
Ann & Richard Carr
The Thomas & Agnes Carvel
Foundation
James & Oona Clare
James S. Beauregard Dineen
Lawrence & Karen Doyle
Peter Doyle
Eleanor Fink
Paul Ford
David & Patricia Goodrich
Rebecca & Laurence Grafstein
William J. Hamilton, Jr.
Lola Jaffe

Jake's Saloon
Patricia & William Jordan
William Karatz
Derek & Mary Keaveney
Jim & Karen King
Suzanne Mados
Brian & Florence Mahony
Anthony & Patricia Mazzone
Brian & Rosemary McAllister
Carolyn & Gerry McGrath
Jeanne & Steve McGrath
Mollie Schnoll
Kathe Mull & Connor Smith
Mary Ellen Murphy &
Henry Cavanna
Lawrence O'Brien III
Walter R. O'Neil
Judy & Hal Prince
Peter A. & Kathy Quinn
Robert Savage & Nanette Lepore
Thomas & Cynthia Sculco
Jean & Kenneth Telljohann
Jay Tunney
Jerry Wade
The Lila Wallace Acheson
Theatre Fund
Joan Waters
The Donald & Barbara Zucker
Foundation

\$1,000 TO \$4,999

Anonymous
Stephen Alexopoulos
Allen Alfrod
Kay Allaire
Robert Barrett
Christina Clancy Allison
Oliver & Brenda Anderson
The Arthur Foundation
Brad & Amy Ball
Herbert A. Bennett Arnhold &
S. Bleichroeder
George & Marilyn Berger
William Block
Ray & Mary Brady
Robert Burton
James & Mary Callanan
Robert & Joan Campbell
Paul & Jeanne Carroll
Anthony & Joan Cavanna
Joyce Chelberg
Tina Chen
Kevin Collins
Vincent & Joan Comiskey
J. Walter Corcoran

CONTRIBUTORS TO IRISH REPERTORY THEATRE

CAMPAIGN FOR A PERMANENT HOME

(as of February 10, 2020)

Edna Craddock	Kaori Kitao	Peter & Carmel O'Reilly
John Cullen	Max Klimavicius	The Paulazzo Family
Catherine G. Curran	Norma Langworthy	Ellen Peckham
Steve & Maggie Dixon	Terence & Rita Lennon	Andras & Imelda Dardis Petery
Alexis Doyle	Thomas Leonard	Charlotte Quaintance
Joyce Doyle	Martin Lewis & Diane Brandt	Catherine Rinaldi
James Duffy	The Frederick Loewe Foundation	Leslie & Curtiss Roach
Joan & William Felder	Kathleen & Edward Ludwig	Ellen M. Rose,
Herbert & Cynthia Fields	Frank & Mary Macchiarola	in memory of Reginald Rose
Evelyn Finn	John Maguire	Rosalie Sayles
Barbara Fleischman	Jane A. Majeski	Charles & Karen Schader
Charles Forma	John & Vivian Majeski	Margaret M. Sharkey
Lori & Edward Forstein	Edward Malone	Melvin Silverman
Roger & Marion Gilbert	Raoul Mancini	Kathleen H. Simmons
Joyce Gordon	James & Ellen Marcus	Edgar O. Smith
Amy Greer & Mark Murphy	Peggy Marks	Rich Soja
Teresa & Jay Grimm	Judith & David Marrus	Helen Spear
Mr. & Mrs. Albert Gurney	Margaret McConnell	Lisa Sullivan
The Haley Foundation	Bernard & Patricia McElhone	Martin & Antoinette Sullivan
Diane Hawes	John & Sarah McGinty	Dennis Swanson
Thomas Hayden	Ned & Valerie Monaghan	Laurence Tishler
Michael & Laura Higgins	Marty Murray,	Bernadette Toomey
Barbara Hultay	Murray & Josephson, CPA's	Don & Rosemary Travis
Mr. & Mrs. Robert Huxley	Ed & Alexandra Napier	Albertus Van Den Broek &
Dana Ivey	Colleen Noall	Pat Duffy Van Den Broek
John Joyce	David P. Nolan	Lorraine & Jack Walker
Julia Judge	Prudence O'Connor Neubert	Francis H. Williams
Tom & Valerie Kennedy	Jeanne & John M. O'Connor	Andrew Xu & Timothy Iverson
Cornelius V. Kilbane, Jr.	Michael & Sylvia O'Neill	Bob & Joanne Yunich

(as of October 21, 2020)

FOUNDATION, CORPORATE & GOVERNMENT SUPPORT

Irish Repertory Theatre's work would not be possible without public funds provided from the New York City Department of Cultural Affairs with support from Mayor Bill de Blasio, Cultural Affairs Commissioner Tom Finkelpearl, New York City Council Members Corey Johnson and Daniel Dromm, and Manhattan Borough President Gale A. Brewer, as well as support from New York State, including Governor Andrew Cuomo, and Assembly Members Michael Cusick and Richard N. Gottfried.

\$50,000 AND ABOVE

Howard Gilman Foundation
The Department of Foreign Affairs and the
Consulate of Ireland in New York
City of New York, Department of Cultural Affairs
The Shubert Foundation

\$20,000 AND ABOVE

Anonymous
The American Ireland Fund*
Mutual of America*
The Harold and Mimi Steinberg
Charitable Trust
New York State Council on the Arts

\$10,000 AND ABOVE

Northern Ireland Bureau,
British Council Northern Ireland, and the
Arts Council of Northern Ireland
Pernod Ricard USA*
The Lucille Lortel Foundation
The Fan Fox and Leslie R. Samuels Foundation

The Michael Tuch Foundation
The Dorothy Strelsin Foundation, Inc.*
The Waldman Foundation

\$5,000 AND ABOVE

Aer Lingus
The Axe-Houghton Foundation
The Gladys Kriebel Delmas Foundation
The GHR Foundation
Obediah Fund of the Coastal Community
Foundation
The Billy Rose Foundation, Inc.
Tourism Ireland*

\$1,000 AND ABOVE

The Actors' Equity Foundation
The Corymore Foundation
The George Mead, Jr. Foundation
The Lambs Foundation
The Rodgers and Hammerstein Foundation

**Includes support of Irish Rep's Annual Gala*