

IRISH REPERTORY THEATRE



THE
BEACON

BY NANCY HARRIS



IRISH
REPERTORY
THEATRE

Fáilte

A warm Irish welcome
on board your flight

Enjoy the best of
Irish hospitality when
you fly non-stop from
New York to Dublin.
For more information
visit aerlingus.com

Connect to
20+ European cities
from Dublin with
Aer Lingus



Aer Lingus 
You're *very* welcome

IRISH REPERTORY THEATRE

CHARLOTTE MOORE, ARTISTIC DIRECTOR | CIARÁN O'REILLY, PRODUCING DIRECTOR

ON THE FRANCIS J. GREENBURGER MAINSTAGE

PRESENTS

THE NORTH AMERICAN PREMIERE OF

THE BEACON

BY NANCY HARRIS

DIRECTED BY

MARC ATKINSON BORRULL

STARRING KATE MULGREW

WITH ZACH APPELMAN, SEAN BELL,
DAVID MATTAR MERTEN, AYANA WORKMAN

scenic & lighting design

COLM
McNALLY

costume design

ORLA
LONG

sound design

LIAM
BELLMAN-SHARPE

properties

NICOLE
ROZANSKI

dialect coach

JANE GUYER
FUJITA

fight director

RICK
SORDELET

production stage manager

PAMELA
BRUSOSKI

assistant stage manager

KAREN
EVANOUSKAS

press representative

PRINT SHOP
PR

casting director

GEOFF
JOSSELSO, CSA

general manager

LISA
FANE

OPENING NIGHT: SEPTEMBER 22, 2024

THE BEACON WAS COMMISSIONED AND FIRST PRODUCED BY DRUID THEATRE COMPANY, GALWAY, IRELAND AND DIRECTED BY GARRY HYNES.

IRISH REPERTORY THEATRE'S 2024-2025 SEASON IS SUPPORTED, IN PART, BY YOUR TAXPAYER DOLLARS THROUGH THE NEW YORK STATE COUNCIL ON THE ARTS WITH THE SUPPORT OF GOVERNOR KATHY HOCHUL AND THE NEW YORK STATE LEGISLATURE AND THE NEW YORK CITY DEPARTMENT OF CULTURAL AFFAIRS, IN PARTNERSHIP WITH THE CITY COUNCIL; AS WELL AS CULTURE IRELAND, THE AGENCY FOR THE PROMOTION OF IRISH ARTS WORLDWIDE; THE DEPARTMENT OF FOREIGN AFFAIRS AND THE CONSULATE OF IRELAND IN NEW YORK; THE HOWARD GILMAN FOUNDATION, THE SHUBERT FOUNDATION, THE CHARINA ENDOWMENT FUND, THE MORRIS & ALMA SCHAPIRO FUND, THE HAROLD & MIMI STEINBERG CHARITABLE TRUST, THE HUGOTON FOUNDATION, THE LEON LEVY FOUNDATION, THE TOW FOUNDATION, IRELAND FUNDS AMERICA, MUTUAL OF AMERICA, THE MICHAEL TUCH FOUNDATION, AND OUR MANY GENEROUS MEMBERS AND DONORS.

MEET THE CAST!



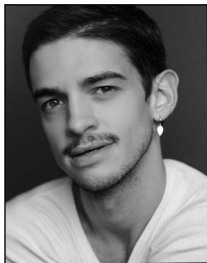
**KATE
MULGREW**



**ZACH
APPELMAN**



**SEAN
BELL**



**DAVID
MATTAR MERTEN**



**AYANA
WORKMAN**

CAST

Beiv..... Kate Mulgrew
Colm..... Zach Appelman
Donal..... Sean Bell
Ray..... David Mattar Merten
Bonnie..... Ayana Workman

PLACE

Beiv's cottage on an island
off the coast of West Cork.

RUNNING TIME: 2 hours and 30 minutes,
including an intermission

FOLLOW US #IRISHREP!



FACEBOOK.COM/IRISHREP



@IRISH_REP



@IRISHREP



@IRISH_REP



@IRISHREP

NOTE FROM THE PLAYWRIGHT

The idea for *The Beacon* began with two things – a place and an image. The place was West Cork and the image was of a glass house overlooking the wild Atlantic sea.

The play was originally commissioned by Druid, the renowned new writing company founded by Garry Hynes, and based in the west of Ireland. Working with a company whose history was so grounded in that part of the country got me thinking about my own west of Ireland roots. Though originally from Dublin, my family moved to West Cork for an extended period of time when I was a small child because my father, another writer, was immersed in historical research about the area during the famine.

The village, Baltimore, now a popular holiday destination, was still mostly a working fishing village in those days. Though beautiful in summertime – when holiday-makers came from all over Europe and filled the pubs and coves, with many a summer romance ignited in June and extinguished by August – the winters there were not for the faint hearted. Grey skies surrounded by grey seas and long months of short daylight hours can take their toll on psyches used to the distractions of city life. My mother still talks of lonely winter afternoons in the empty village, pushing my buggy up and down the small pier, silent but for the ghostly clinking of boats tied to their moorings, their summer owners long gone.

Our time in West Cork was formative for many reasons. Lifelong friendships were forged with locals and indeed, some members of the family never left. As a result, it's a place I have returned to again and again throughout my life, and I have always loved it – especially the islands, which are beautiful, remote, and somewhat mysterious. If one believes a West Cork winter to be arduous, living all year round on a stark island requires a tolerance for isolation, not to mention an inner resilience most people don't have – or want.

Despite this, a large number of visual artists seem to be drawn to the islands – whether for their beauty or lack of distraction – and this has always intrigued me. Being a writer, I am always struck by the confidence of painters and sculptors, visual artists of all kinds in fact, who present their work to the world and feel no compunction to explain it. Of course their work has meaning, but what you as a viewer experience when you look at it, what it provokes in your heart, your mind, your conscious – and unconscious – that's yours. Art is an experience. Like theatre. And for some artists there is no line between their work and their life.

It seemed to me that there was potential in the collision of some of these ideas: an outsider in a place that is not her home, which is both remote and in its own way claustrophobic. And an artist whose life has always been her work to the point that she is now residing in a 'glass box' – literally making 'an exhibition of herself' – but perhaps for the very reason that she does not want to be revealed.

These paradoxical ideas led to other ideas and questions: if someone has such an intense and passionate relationship with their art, can the real-world relationships of flesh and blood ever measure up? And how does that affect those who love them? And can we ever really know the 'truth' of a thing – be it a person, a place, or a work of art? And if we could, would we want to?

Nancy Harris
August 2024

NOTE FROM THE DIRECTOR

“Art is always an exchange, like love, whose giving and taking can be a complex and wounding matter” — Ali Smith

You're eleven years old. Your legs are heavy from traipsing through the dusty corridors of a seemingly endless gallery. Dust dances in the summer sun, pouring through the imposing windows beside you, and your gaze lands on a painting. It is textured, full of shimmering hues and swirling movement. You stop for a moment, all distractions momentarily suspended. Your mother, a few feet behind you, tentatively asks, “what do you see?” Your answer makes her catch her breath.

The Beacon explores the profound unknowability of other people and, more scarily, ourselves: what we see, what we don't see, and what we choose not to see. The great director, Anne Bogart, speaks of the theatre as the place where we go to “see people see.” In that regard, *The Beacon* is theatre at its purest.

It is also a distinctly Irish play. And what a joy to work on such a play, whose representation of Ireland is modern and refreshing, in New York City. Its humour, attitude, and depiction of Ireland today are new, but its foundations are in Irish history. This is a history of silence, and its powers of corrosion. What happens when truth is repressed? Can we find release in finally seeing beyond what we want to see?

“Art does not reproduce what we see; rather, it makes us see” — Paul Klee

Marc Atkinson Borrull
September 2024

WHO'S WHO IN THE CAST

KATE MULGREW (*Beiv*) starred as Galina “Red” Reznikov, the tough Russian prison chef who is always keeping score, for 7 seasons in the Netflix original series “Orange is the New Black.” For her work on the series, Mulgrew received a Critics’ Choice Television Award and a Primetime Emmy nomination for Outstanding Supporting Actress in a Comedy. Mulgrew is internationally recognized as Captain Janeway, the first female captain in the Star Trek franchise on “Star Trek: Voyager.” She reprised this role on the Paramount+ animated series “Star Trek: Prodigy.” Her career spans film, television, and the stage. Classically trained, she received a Golden Globe nomination at the age of 23 when she portrayed Mrs. Columbo, the wife of the famous detective. Other notable television appearances include “Kate Loves A Mystery,” “Cheers,” “Murphy Brown,” “St. Elsewhere,” “Ryan’s Hope,” “The Black Donnellys,” “Mercy,” “Warehouse 13,” “NTSF:SD:SUV” for Adult Swim, “Mr. Mercedes,” the Showtime Limited Series “The First Lady,” and the Showtime series “The Man Who Fell to Earth.” Up next, Mulgrew will appear in the drama series “Sinking Spring” for Apple TV+. Her film roles include *Throw Momma from the Train*, *Star Trek: Nemesis*, *A Stranger is Watching*, *Remo Williams: The Adventure Begins*, *The Response* and *The Magnificent Meyersons*. Mulgrew has toured throughout the United States as Katherine Hepburn in her stage play, *Tea at Five*, for which she was nominated for Outer Critics’ Circle and Lucille Lortel awards. Other theatre credits include *The Half Life of Marie-Curie*, *Equus*, *The American Dream*, *The Sandbox*, *Iphigenia 2.0* (for which she won an Obie), *Our Leading Lady*, *Black Comedy*, *Titus Andronicus*, and *Somewhere Fun*, all in New York. She performed in *The Exonerated* in London and regionally in *The Royal Family*, *The Film Society*, *What the Butler Saw*, *Hedda Gabler*, *Measure for Measure*, *The Real Thing*, *Another Part Of The Forest*, *Major Barbara*, and *Antony and Cleopatra*. Mulgrew is also an author of two memoirs – “Born With Teeth” (Little Brown), a memoir about life lived to the fullest which made the *New York Times* bestseller list, and “How To Forget: A Daughter’s Memoir” (HarperCollins) published in 2019. She resides in New York City.

ZACH APPELMAN (*Colm*) is best known to NYC audiences for his performances in Julie Taymor’s production of *A Midsummer Night’s Dream* (TFANA), *Troilus & Cressida* (The Public Theater), and *War Horse* (Broadway). Appelman played the title roles in *Henry V* at The Folger Theatre and *Hamlet* at Hartford Stage, for which he won a CT Critics Circle Award. His regional theatre work includes *Arms and the Man* (The Old Globe), *Romeo & Juliet* (Chicago Shakespeare Theatre), and the world premiere of *The Engagement Party* (Hartford Stage), for which he won a second CT Critics Circle Award. On television, Appelman starred in Fox’s hit drama series “Sleepy Hollow” and has appeared on numerous shows including “Homeland,” “The Marvelous Mrs. Maisel,” “Special Ops: Lioness,” “The Good Fight,” “The Resident,” “Chicago PD,” “Bull,” “Blue Bloods,” “New Amsterdam,” “Law & Order: SVU,” “FBI,” “God Friended Me,” “The Passage,” and “Beauty and the Beast.” His film credits include *Like Father* and *Kill Your Darlings*. Appelman has narrated numerous audiobooks including *All The Light We Cannot See* (Audie Award & Earphones Award) and dramatized audiobooks of *Hamlet* and *Julius Caesar* with The Folger Library. He holds a BFA from UC Santa Barbara and an MFA from The Yale School of Drama.

SEAN BELL (*Donal*) recently made his Broadway debut as Robert “Bobby” Biberti in *Harmony: A New Musical* at the Ethel Barrymore Theatre. Other theatre credits include: *A Bronx Tale* (First National Tour), *How to Succeed...* (Kennedy Center), *Young Frankenstein* (Berkshire Theatre Group/Bay Street), *Fully Committed*, *Clue* (Arrow Rock), *Forever Plaid* (The New Theatre), *Deathtrap* (The Fulton), *N/F* (Downtown Urban Theatre Festival), *Oklahoma!* (North Shore). Concerts: *The NY Pops 40th Anniversary Gala* (Carnegie Hall), *Manilow: Live in NY* (Radio City), *The American Pops: How Great Thou Art* (PBS). TV/Film: “Z” (Amazon), “Succession” (HBO), “Red Oaks” (Amazon), “Boardwalk Empire” (HBO). Many thanks to Marc Atkinson Borrull, Geoff Josselson, everyone at Irish Rep, and manager extraordinaire Rochel Saks. @seanbell13, SeanWBell.com

WHO'S WHO IN THE CAST

DAVID MATTAR MERTEN (*Ray*) A proud Arab-German-Irish artist, David just made their Broadway debut this spring in *An Enemy of the People*. Off-Broadway: *Afterglow* (Darius). Selected Regional credits include: *Cabaret* (Emcee), *The Inheritance* at Trinity Rep, *Angels in America* (Prior), *Beirut* (Blue). Training: MFA in Acting at Brown/Trinity, BFA in Acting at Ball State University. This is dedicated to all Arab-American theatre artists, may we be seen, may we be known, and may we be appreciated. @david_merten_

AYANA WORKMAN (*Bonnie*) was most recently in *Rustin* opposite Colman Domingo, playing the role of activist Eleanor Holmes, who is now a delegate from the District of Columbia to the US House of Representatives. The film is directed by George C. Wolfe and produced by the Obama's Higher Ground Productions. Notable television credits include Marvel's "Jessica Jones" and "Person of Interest." Ayana's first gig was an impromptu performance with tap genius Savion Glover. She was three years old. Savion asked the audience if anyone wanted to come up on stage and dance with him. Ayana's hand shot straight up like a rocket. Always prepared, she had her tap shoes with her. Of course, it didn't hurt that her parents were legendary jazz bassist Reggie Workman—a veteran of the John Coltrane Quartet — and Maya Milenovic Workman, an internationally renowned dancer and choreographer. At age 9, she decided she was going to be an actor. A New York City native, her first professional performance in her early 20s was playing Juliet in The Public Theater Mobile Unit's production of *Romeo and Juliet*. More jobs followed like *Hamlet*, *Macbeth*, *The Winter's Tale*, and *Julius Caesar*. On top of that, she's performed on international stages including the National Theatre in Slovenia and London's legendary Globe Theatre.

NANCY HARRIS (*Playwright*) is an award-winning writer from Dublin, whose work has been produced in Ireland, the UK, Germany, the US, and New Zealand. Her plays include: *Somewhere Out There You* (Abbey), *Two Ladies* (Bridge), *The Beacon* (Druid, Gate), *Our New Girl* (Bush, Atlantic), and *No*

Romance (Abbey). For the Royal Shakespeare Company, she wrote the book and co-wrote the lyrics (with composer Marc Teitler) for the musical based on Kate DiCamillo's "The Magician's Elephant". She adapted *The Kreutzer Sonata* by Leo Tolstoy (Gate, La Mama) and wrote the book for *Baddies the Musical* and a new version of Sophocles' Philoctetes for children: *The Man With The Disturbingly Smelly Foot* (Unicorn). Her new version of Hans Christian Andersen's dark fairy-tale *The Red Shoes* will have its UK premiere at the Royal Shakespeare Company this Christmas 2024. Nancy is a past recipient of The Rooney Prize for Irish Literature and the Stewart Parker Award and has been a finalist for The Susan Smith Blackburn Prize. For television she is the creator and writer of the BAFTA nominated comedy/drama series "The Dry".

MARC ATKINSON BORRULL (*Director*) is a NYC & Dublin-based director from Ireland and Catalonia. Recent, critically-acclaimed, work includes: the first major revival of *Bedbound* by Enda Walsh (Landmark, Galway International Arts Festival & Olympia Theatre), *Beginning* by David Eldridge and *Constellations* by Nick Payne (Gate Theatre, Dublin), *Little Gem* by Elaine Murphy (Irish Rep: Outer Critics' Circle Award), *Hamlet* (Gate Theatre & St. Ann's Warehouse - associate), *Children of the Sun* by Maxim Gorky (Primary Stages), *Tempesta* by Deirdre Kinahan (Cork Midsummer Festival), *Wall* (Druid Theatre), *It's Cool in the Shade* by Kwaku Fortune (Dublin Theatre Festival), *Outlying Islands* by David Greig (Connelly Theater), and *Last Night in Inwood* by Alix Sobler (Signature Theatre). Marc co-founded the company Sugarglass whose work has been presented internationally, including the Irish Premiere of *Tender Napalm* by Philip Ridley (Project Arts Centre, Dublin), *All Hell Lay Beneath* (Irish Times 'Cultural Highlight of the Year'), *Five Minutes Later* by Ellen Flynn (The Lir, Dublin) and *Ethica: Four Shorts* by Samuel Beckett, which was presented in the residence of the Irish President to celebrate International Human Rights Day (Krastyo Theatre, Bulgaria; Happy Days Festival, Enniskillen). Upcoming projects include a radical re-imagining of Moliere's *The Misanthrope* and a contemporary

WHO'S WHO IN THE CAST

Irish production of *Three Sisters* adapted by Ciara Elizabeth Smyth. Marc's associate director credits include working with Anne Bogart at SITI Company; Ivo Van Hove at Toneelgroep Amsterdam; Yaël Farber at St. Ann's Warehouse; Daniel Fish at BAM; and Joe Murphy at The Old Vic. MFA: Columbia University. Proud Member of SDC, a national theatrical labor union. marcatkinsonborrull.com

COLM McNALLY (*Scenic, Lighting and Projection Design*) is an Irish theatre designer based in the Bay Area, California. As a designer, he is deeply committed to the collaborative process of theatre making and to creating spaces and moments that allow for the artistic expression of his collaborators. He is currently the Director of Technical and Production at Z Space, San Francisco. He was trained at Trinity College and The Lir Academy. Prior to moving to the Bay Area, Colm was the Master Electrician at the Gate Theatre in Dublin, Ireland. Recent design credits include *Ripped* by Rachel Bublitz at Z Below, and *Baba, The Life and Death of Stana* by Karmina Sileç at Z Space's Steindler Stage. Colm has been nominated for the Irish Times Theatre Awards and the Bay Area Theatre Awards. His work has been described as "superbly designed" — Irish Theatre Magazine, "exceptional use of space" — Irish Theatre Magazine, "too beautiful" — The Irish Times, "breathtaking effects" — Bay Area Plays.

ORLA LONG (*Costume Design*) was nominated for a Lucille Lortel award for Outstanding Costume Design for the Irish Rep's production of *Endgame*. She holds an MFA in Design from Tisch NYU and a BA in Drama & French Studies from Trinity College Dublin. Orla is a proud member of the United Scenic Artists, Local USA 829, and an adjunct professor at NYU Tisch's Undergraduate Drama Program. Credits: *Philadelphia, Here I Come!, Endgame, The Butcher Boy, Made by God* (Irish Repertory Theatre, NY), *Steppe* (Rattlestick Theater), *Juggernaut* (Columbia University), *Beauty and the Beast* (Mill Theatre, Dublin), *Kiss Kiss Slap Slap* (Dublin Fringe Festival), *Cora, Leah & I* (The New Theatre, Dublin), *Bert* (Scene & Heard Festival,

Dublin), *The Last Five Years* (Project Arts Centre, Dublin). Associate design: *Waiting for Godot* (des. Susan Hilferty, TFANA), *Hadestown* (des. Michael Krass, Broadway & National Tour), *Hamlet* (des. Susan Hilferty, St. Ann's Warehouse NY, The Gate Theatre Dublin). orlalong.com

LIAM BELLMAN-SHARPE (*Sound Design and Original Music*) is a multi-disciplinary practitioner working primarily in sound and music for live performance. Liam's work includes musical and sonic scores and environments for theatre, dance, installation, and hybrid forms. As a composer, sound designer, orchestrator, musician, and music director, Liam's work has been heard in the United States, Europe, Hong Kong, and Australia. Liam holds a Bachelor of Music with Honors from the Melbourne Conservatorium of Music and an MFA in Sound Design from the Yale School of Drama.

NICOLE ROZANSKI (*Properties*) is a New York based Props Designer, Manager, and Artisan. She can also be found working as Props Lead for the Year 2 Graduate Program at NYU Tisch, having worked on shows there such as *The House That Will Not Stand, The Doctor's Dilemma, A Midsummer Night's Dream, Fifth of July, Fabulation, Yerma, and Major Barbara*. Since graduating from Rollins College in 2021, Nicole has freelanced in various states before moving to New York City in November 2022. Past Off-Broadway credits include: *Aristocrats* and *Philadelphia, Here I Come!* (Props, Irish Repertory Theatre); *The Fires* (Props Artisan, Soho Repertory Theatre); *Manhatta* (Props Artisan, The Public Theater). Regional: *Double Helix, Dial M for Murder* (Props Designer, Bay Street Theater); *The Karate Kid: The Musical, In the Heights, and A Chorus Line* (Props Supervisor, STAGES St. Louis); *Buddy: The Buddy Holly Story, America in One Room, The Play that Goes Wrong, Rounding Third, and My Lord What a Night* (Florida Studio Theater). Educational: *Fall Scenes* (Props Manager, Yale Opera, School of Music). Nicole would like to thank her mom, dad, sister, grandparents, and friends for all their incredible support and love through the years. Website: nicolerozanski.com, IG: @nicolemarierose

WHO'S WHO IN THE CAST

JANE GUYER FUJITA (*Dialect Coach*) is a voice and dialect specialist based in New York City. She has coached productions in NYC on Broadway, including *Cabaret at the Kit Kat Club*, as well as at Lincoln Center, Playwrights Horizons, The Playwrights Realm, Page 73, Primary Stages, The Public Theater, and Signature Theatre. Regionally, she has coached productions at the American Repertory Theater, Williamstown Theatre Festival, Yale Repertory Theatre, Hudson Valley Shakespeare, The Curran Theater, and Actors Shakespeare Project. Her most recent film and TV credits include: *Ant-Man and the Wasp* and "Loki" (Marvel/Disney+), *A Small Light* (Disney+), and *Cat Person* (StudioCanal). She currently serves as the Head of Voice and Speech at New York University's Graduate Acting Program.

RICK SORDELET (*Fight Director*) Rick and his sons Christian and Collin Kelly-Sordelet created Sordelet Inc., a Native-owned action movement company. They have done 80 Broadway productions, including *The Lion King*, *Beauty and the Beast*, and *Tina: The Tina Turner Musical*, with 52 first-class productions worldwide as well as regional theater, national tours, many operas, films, and loads of television productions. They teach at William Esper Studio, HB Studio, CUNY Harlem, Montclair State, Kean University, The Acting Studio, and 22 years at The Yale School of Drama. Rick is a board member for Red Bull Theater. To learn more, visit Sordeletinc.com or our e-publishing company at Sordeletink.com.

PAMELA BRUSOSKI (*Production Stage Manager*) has been a stage manager at Irish Rep for 21 years and for more than 45 shows. Notable/favorite productions include *A Child's Christmas in Wales*, *Dancing at Lughnasa*, *The Emperor Jones*, *Finian's Rainbow*, and *Freedom of the City*. Broadway: *Beauty and the Beast* and *Little Women*. Selected Off-Broadway: Charles Grodin's *The Right Kind of People* (Primary Stages), *A Last Dance for Sybil* with Ruby Dee and Ossie Davis (New Federal Theatre), Mint Theater Company, The York Theatre Company, and Carnegie Hall.

Regionally: Pioneer Theatre Company, Pittsburgh CLO, Pittsburgh Public Theater, and PICT Classic Theatre. MFA in Directing: Brooklyn College (CUNY).

KAREN EVANOUSKAS (*Assistant Stage Manager*) Broadway: *Act One*, *War Horse*. Off-Broadway: *Corruption*, *The Gardens of Anuncia*, *The Saviour*, *Your Own Personal Exegesis*, *Los Otros*, *Epiphany*, *Intimate Apparel*, *Autumn Royal*, *Greater Clements*, *The Rolling Stone*, *Nantucket Sleighride*, *The Hard Problem*, *Admissions*, *The Emperor Jones*, *Don't You F**king Say a Word*, *Shows For Days*, *The Mystery Of Love & Sex*, *A Christmas Memory*, *The Money Shot*, *Who's Your Daddy*, *Communicating Doors*, *Visiting Mr. Green*, *Picasso at the Lapin Agile*, and *Yoko Ono's New York Rock*. Regional: *Galileo* at Berkeley Rep, *Warhol/Capote* at A.R.T.

GEOFF JOSSELSON, CSA (*Casting Director*) is thrilled to continue collaborating with the Irish Repertory Theatre. Select credits include Broadway: *Spamalot*, *Sweeney Todd*, *Into the Woods* (Artios Award winner), *The Velocity of Autumn*. Off-Broadway: *Cellino v. Barnes*, *Dracula: A Comedy of Terrors*, *Altar Boyz*, *Southern Comfort*, *Yank!*. Select New York and regional theatre companies include Arena Stage, Actors Theatre of Louisville, Baltimore Center Stage, The Kennedy Center, Long Wharf Theatre, Old Globe, Oregon Shakespeare Festival, Studio Theatre, Paper Mill Playhouse, Pasadena Playhouse, Pittsburgh CLO, Pittsburgh Public Theatre, Repertory Theatre of St. Louis, Signature Theatre, Studio Theatre, Village Theatre, and York Theatre Company. josscasting.com

CHARLOTTE MOORE (*Artistic Director*) Recent directing assignments: *Molly Sweeney* and *Aristocrats* (as part of Irish Rep's 35th season long celebration: *The Friel Project*), *Dear Liar* (as part of the *Letters Series*), *A Child's Christmas in Wales*, *Two by Synge*, *The Streets of New York*, *Meet Me in St. Louis**, *Love, Noël**, *Molly Sweeney**, (**Performances on Screen*), *London Assurance*,

WHO'S WHO IN THE CAST

Love, Noël: *The Songs and Letters of Noël Coward*, *The Plough and the Stars* as part of *The O'Casey Cycle*, *On a Clear Day You Can See Forever*, *Three Small Irish Masterpieces* by W.B. Yeats, Lady Gregory, and J.M. Synge. New York premiere of Brian Friel's *The Home Place*, world premiere of Larry Kirwan's *Rebel in the Soul*, *Finian's Rainbow*, The Phyllis Newman Women's Health Initiative Gala, Truman Capote's *A Christmas Memory*, *Juno and the Paycock* and *Dancing at Lughnasa*. New York stage appearances include *A Perfect Ganesh*, *Meet Me in St. Louis*, *The Perfect Party*, *Morning's at Seven*, *Private Lives* (with Elizabeth Taylor and Richard Burton), and many performances with the New York Shakespeare Festival. Ms. Moore has received two Tony Award nominations, the Outer Critics Circle Award, the Drama Desk Award, the Drama League Award, the Irish America Top 100 Irish Award, The Eugene O'Neill Lifetime Achievement Award, and the 2008 Irish Women Of The Year Award. She is the recipient of the St. Patrick's Committee in Holyoke's John F. Kennedy National Award, and has thrice been listed as one of the "Top 50 Power Women" in *Irish America Magazine*. Charlotte was named "Director of the Year" by *The Wall Street Journal* in 2011. Charlotte has been inducted in to the Irish America Hall of Fame and awarded the Presidential Distinguished Service Award for the Irish Abroad in 2019 by President of Ireland, Michael D. Higgins.

CIARÁN O'REILLY (*Producing Director*) Favorite directing credits include: *Philadelphia, Here I Come!* (as part of Irish Rep's 35th season long celebration: *The Friel Project*, Lortel Nom., Drama Desk Nom., OCC Nom.) *Love Letters*, *Endgame* (Off-Broadway Alliance Award for Best Play Revival, OCC Nom., Lortel Nom., and Drama Desk Nom.), *The Butcher Boy*, *A Touch of the Poet*, *Autumn Royal*, *A Touch Of the Poet**, *The Weir** (*Performances on Screen), *Lady G: Plays and Whisperings of Lady Gregory*, *Dublin Carol*, *The Shadow of a Gunman*, *The Seafarer*, *The Dead*, *1904*, *Shining City*, *Off the Meter*, *On the Record*, *The Weir* (Calloway Nom.), *Banished Children of Eve*, *The Emperor Jones* (Callaway Award, O'Neill

Credo Award, Drama Desk, Drama League, and Lucille Lortel Nom.), *The Hairy Ape* (Drama Desk Drama League and Callaway Nom.). Irish Rep acting roles include *Philadelphia, Here I Come!* (AEA Richard Seff Award), *Da*, *Juno and the Paycock*, *Dancing at Lughnasa*, *Molly Sweeney*, *Candida*, *Aristocrats*, *A Whistle in the Dark*, *The Shaughraun*, and *The Irish and How They Got That Way*. He appeared in the Roundabout Theatre Company's production of *A Touch of the Poet* with Gabriel Byrne. He has appeared at the Abbey Theatre in Dublin and made his Broadway debut in *The Corn is Green*. Film and TV include *The Devil's Own* (starring Harrison Ford), "Law & Order," *The Irish...and How They Got That Way*, *Third Watch*, *Bored to Death*, and *The Knick*. Ciarán has been inducted in to the Irish America Hall of Fame and has been awarded the Presidential Distinguished Service Award for the Irish Abroad, 2019 by President of Ireland, Michael D. Higgins.

IRISH REPERTORY THEATRE Founded by Ciarán O'Reilly and Charlotte Moore in 1988, Irish Repertory Theatre opened its doors with Sean O'Casey's *The Plough and the Stars*, and is now in its 36th season. Irish Rep is the only year-round theatre company in North America devoted to bringing Irish and Irish-American works to the stage. Recognized with the Jujamcyn Theatres Award in 2007, a special Drama Desk Award for "Excellence in Presenting Distinguished Irish Drama," in 1992, the Lucille Lortel Award for "Outstanding Body of Work," in 2005, and a 2013 Outer Critics Circle Special Achievement Award for 25 years of producing outstanding theatre. Irish Repertory Theatre is proud to present the very best in Irish theatre, from the masters to the new generation of Irish and Irish-American writers who are transforming the stage. Located in the heart of New York's Off-Broadway community, Irish Rep offers an engaging perspective on the Irish and their unique contributions to the world of drama. In May 2020, Irish Rep presented full-length digital productions as filmed during the COVID-19 pandemic as Irish Rep Online, welcoming new audiences from around the globe.



A Letter from the Directors

What better way to start the 36th season than with a breath of crisp air from across the ocean.

The Beacon, by the luminous Nancy Harris, is receiving its North American Premiere at Irish Repertory Theatre, and we could not be prouder.

Its title suggests light and guidance, but in the murky waters of Ireland's southern coast, there are hearts to be broken and truths to be revealed. It happens in a landscape that speaks to a new Ireland – an edgy, contemporary place where its characters wipe the worn, cliched Irish cobwebs from our midst.

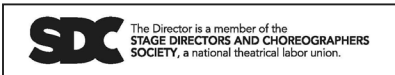
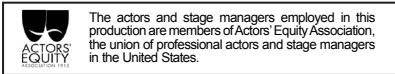
It thrills us and we hope it thrills you!

CHARLOTTE MOORE, ARTISTIC DIRECTOR

CIARÁN O'REILLY, PRODUCING DIRECTOR

IRISH REP ADMINISTRATIVE STAFF

Artistic Director Charlotte Moore
Producing Director Ciarán O'Reilly
General Manager Lisa Fane
Director of Development Jim Bredeson
Director of Marketing & Art Director Muireann Lalor
Director of Audience & Play Development Nicola Murphy Dube
Assistant General Manager Kate Mandracchia
Audience Services Manager Tina Tannenbaum
Digital Media Marketing Manager Samantha Seaman
Development Manager Cassie Pearson
Development Coordinator Anna Collins
Marketing Associate Rianna Flaherty
Marketing Assistant Andi Grene
Box Office Associates Cynthia Bajor, Maggie Winslow
House Managers Cynthia Bajor, Olivia Gesualdi,
Caitland Winsett, Maggie Winslow
Front of House Associates Anna Barrett, Alana Bowers,
Graydon Gund, Anjelica Mitlitsky, Michaela Pascuzzi,
Veronica Perez, Naima Randolph,
Lucy Roberts, Hannah Rody-Wright, Ronan Rogers
Legal Counsel James O'Malley
..... Jeremy Keele, Kathryn Smith,
Carmine D. Boccuzzi, Leigh Giroux
Accountants PKF O'Connor Davies, LLP.
Human Resources/Payroll Paychex
Insurance AJG Risk Management
Banks M&T Bank, TD Bank
IT Consultants RP Tech Services
Financial Services Patricia Taylor



SERVICES

LATECOMERS will be seated at the discretion of the House Manager at the first appropriate interval on a space available basis.

ACCESSIBLE seating is available, by reservation, for patrons with disabilities. For assistive listening devices and i-Caption devices, please see a House Manager or Front of House Associate.

ADVERTISE in our program! For options and rates call 212.255.0270, or email samantha@irishrep.org

TICKETS are available at IrishRep.org or by calling the box office at 212.727.2737. No refunds. Exchanges for a fee.

COVID-19 audience members may choose whether or not they wear face masks throughout our theatre spaces. Learn more at irishrep.org/covid19

PRODUCTION STAFF

Production Manager Josh Allen
Associate Production Manager Marissa Crowe
Head Electrician/Programmer Megan Peti
Wardrobe Supervisor Dayna Nolan
Production Stage Manager Pamela Brusoski
Assistant Stage Manager Karen Evanouskas
Hair and Makeup Consultant Ashley Wise
Assistant Costume Design Lindsey Eifert
Set Construction Hillbolic Arts & Carpentry
Carpenters Victor Gonzalez, Alphonso Taylor,
Raheem Cobb, Andy Diaz
Scenic Charge Kelsey Abberger
Electrics Scott McBride, Molly Siskin, Gary McStea,
Jen Leno, Andy Rowell, Yoshiya Ohno, Rhyke Fornow
i-Caption Preparation Marissa Crowe
Key Art Ruaidhri Kelly, Muireann Lalor
Photography Carol Rosegg

PRESS REPRESENTATION

Print Shop PR
Matt Ross, Nicole Capatasto,
Liz Lombardi, Claire Wojciechowski

CREDITS

Hillbolic Arts & Carpentry

Lighting Equipment Provided
by Hayden Production Services

FIRE NOTICE

The exit indicated by a red light and sign nearest to the seat you occupy is the shortest route to the street. In the event of fire or other emergency please do not run — WALK TO THAT EXIT.

Thoughtless persons annoy patrons and endanger the safety of others by lighting matches or smoking in prohibited areas during the performance and intermissions. This violates a city ordinance and is punishable by law.

— FIRE COMMISSIONER

WARNING

The photographing or sound recording of any performance or the possessing of any device for such photographing or sound recording inside this theatre, without the written permission of the management, is prohibited by law. Violators may be punished by ejection and violation may render the offender liable for money damages.

New York City Ordinance prohibits use of cellular phones, pagers, personal digital assistants, and other audible electronic devices during a performance. If you are in possession of one, please be sure it is turned off prior to the performance.

Smoking is prohibited anywhere on the premises. This violates a city ordinance & is punishable by law.



**IRISH
REPERTORY
THEATRE**

**BOARD OF DIRECTORS OF
IRISH REPERTORY THEATRE**

Kathleen Begala, *Chair*

Tom Cashin

Kevin M. Curley

John DellaNoce

Eoin Duane

John Duane

Tina Pendergrast Santi Flaherty

John Gardiner

Edward Greene

Michael Keogh

Cornelius V. Kilbane, Jr.

Simon Lorne

Ellen McCourt, *Chair Emeritus*

Charlotte Moore

Colleen Murphy

Brendan O'Reilly

Ciarán O'Reilly

Anna V. Smith

Nancy Woodruff



IRISH REPERTORY THEATRE COMPANY

Brendan Aanes	Orlagh Cassidy	Lindsay Fuori	Elliot Joseph
Gary Adler	Joe Cassidy	Stephen Gabis	Carol Kane
Shereen Ahmed	Yu-Hsuan Chen	Aaron Gaines	Brian Keane
Hamish Allen-Headley	Tracy Christensen	Boyd Gaines	John Keating
Shannah Allison	Jonathan Christman	Caitlin Gallogly	Aoife Kelly
Esther Arroyo	Una Clancy	Victor Garber	Richard Kent
Arthur Atkinson	Josh Clayton	Leana Gardella	Paul Keogan
Jay Aubrey Jones	Rufus Collins	Mary Garrigan	Justin Keyes
Belle Aykroyd	Rachel Coloff	Daniel Geggatt	Patricia Kilgarriff
Florrie Bagel	Kerry Conte	Rachel Geier	Haskell King
Conor Bagley	Amanda Jane Cooper	Matt Gibson	Jo Kinsella
David Baida	Charlie Corcoran	Briana Gibson Reeves	April Ann Kline
Mike Baldassari	Peter Cormican	Melissa Gilbert	Nina Korelitz Matza
Gail Baldoni	Nicholas A. Cotz	Phil Gillen	Barry Kreinik
Talia Balsam	Peyton Crim	Ed Goldschneider	Kylie Kuioka
Nicholas Barasch	Dermot Crowley	Sean Gormley	Ron Lagomarsino
Bailey Bass	Robert Cuccioli	Michael Gottlieb	Owen Laheen
Jamie Beamish	John Cudia	Pamela J. Gray	Reed Lancaster
Jeffrey Bean	Ben Davis	Andrea Lynn Green	Hugh Landwehr
John Lee Beatty	Susan Davey	Bob Green	Colin Lane
David Beck	Jeff Davolt	Dante Green	Robert Langdon Lloyd
Barbara A. Bell	Barry Day	Joe Grifasi	China Lee
John Bell	Sinead Diskin	Kristin Griffith	Christine Lemme
William Bellamy	Craig Wesley Divino	Elliot Griggs	Jenny Leona
Liam Bellman-Sharpe	Leon Dobkowski	Gabrielle Guagenti	Aida Leventaki
Laura Benanti	Jade Doina	Stephanie Roth Haberle	Drew Levy
Kaleigh Bernier	Mary Jo Dondlinger	John Haidar	Chen-Wei Liao
Ann Beyersdorfer	Terry Donnelly	Martha Hally	Whitney Locher
Reed Birney	Michelle Dooney Mahon	Colin Hamell	Orla Long
Ephraim Birney	David Downes	Jean Hanff Korelitz	Evanna Lynch
Heather Martin Bixler	Margaret Dudasik	Sam Hartley	Jude Lynch
Amy Bodnar	Rory Duffy	Mark Hartman	Deirdre Madigan
Stephen Bogardus	John Treacy Egan	Cillian Hegarty	Brian MacDevitt
Haley Bond	Lindsey Eifert	Meg Hennessy	Robert Mack
Marc Atkinson Borrull	Danielle Elegy	Richard Henry	Dan Macke
Ciaran Bowling	Caroline Eng	Erica Hernandez	Labhaoise Magee
Christina Bracco	Matthew Engle	David Hess	Daniel J. Maldonado
Deirdre Brennan	Melissa Errico	Maeve Higgins	Mary Mullen
Stephen Brennan	David Esler	Brandy Hoang Collier	Ed Malone
Matthew Broderick	Karen Evanouskas	Daisy Hobbs	Peter Maloney
Nathanael Brown	Ali Ewoldt	Tom Holcomb	Kate Mandracchia
Carey Rebecca Brown	Katie Fabel	Johnny Hopkins	Daniel Marconi
Pamela Brusoski	Linda Fisher	Doug Hughes	Nate Markiewicz
Kimberly Doreen Burns	James FitzSimmons	Geraldine Hughes	Marsha Mason
Kate Burton	Kathy Fitzgerald	Miriam Hyfler	Colum McCann
Dan Butler	Patrick Fitzgerald	Bill Irwin	Mary McCann
Ciaran Byrne	Julie Foh	Ben Jacoby	Matthew McCarthy
Dewey Caddell	Sofia Foran	Toni-Leslie James	John McDonagh
Emma Camp	Kate Forbes	Carson Joenk	David McElwee
Colin Campbell	Jackie Fox	Austyn Johnson	Kate McGee
Owen Campbell	Jane Guyer Fujita	Patrice Johnson	Seán McGinley
Len Cariou	Yasuhiko Fukuoka	Chevannes	Polly McKie

IRISH REPERTORY THEATRE COMPANY

Barry McNabb	Jack Phelan	Scott Stangland	John Fiedler
Colin McPhillamy	Rachel Pickup	Rachel Stone	Jerry Finnegan
Jennifer McVey	Stephen Pilkington	Christian Strange	Pauline Flanagan
Brenda Meaney	Mary Ann Plunkett	Caroline Strange	Herb Foster
Michael Mellamphy	Liam Prendergast	Sarah Street	Bernard Frawley
Christopher Metzger	Dan Prosky	Gabrielle Strong	Kenneth Garner
Jordan Meyer	Michael Quadrino	KT Sullivan	Gary Gregg
Hope Michelson	Amanda Quaid	Colm Summers	Donald Grody
Dearbhla Molloy	McKenna Quigley	Gordon Tashjian	Margaret Hall
Aedin Moloney	Harrington	Teho Teardo	Jack Hofsis
Paddy Moloney	Michele Ragusa	Giles Thomas	Celeste Holm
Rebecca C. Monroe	Christopher Randolph	John Douglas	George S. Irving
James Morgan	Giselle Andrea Raphaela	Thompson	Stephen Jones
Brooklynn Morgan	Aidan Redmond	Tracy Thorne	Eamon Kelly
Edward Morris	Rob Rees	Marian Tomas Griffin	John Leighton
Asher Muldoon	Leenya Rideout	David Toser	Leo Leyden
Paul Muldoon	Meredith Ries	Sara Jean Tosetti	Rusty Magee
Marie Mullen	Logan Riley	Stanley Townsend	Tommy Makem
Mary Mulligan	Ashley Robinson	Teddy Trice	Graeme Malcolm
Nicola Murphy Dubey	Oona Roche	Avery Trunko	Victoria Mallory
Andy Murray	Steve Ross	David Hancock Turner	Anna Manahan
Jenn Murray	Lisa Rothe	Richard Twyman	Nancy Marchand
Hidenori Najako	Fran Rubenstein	Jordan Tyson	Alphie McCourt
Brian Nason	Tim Ruddy	John Vennema	Frank McCourt
Sven Nelson	Ryan Rumery	Alejo Vietti	Malachy McCourt
Joshua Neufeld	Thomas Russell	Rosanna Vize	Dermot McNamara
Seth Numrich	James Russell	Max von Essen	Paddy Moloney
James Noone	Danielle Ryan	Brooke Von Hensbergen	Fidelma Murphy
Joe O'Byrne	Lawrence Schober	Ryan Vona	Brian Murray
Emer O'Cleary	Dan Scully	Price Waldman	Edwin C. Owens
Naomi Louisa O'Connell	Karl Scully	Craig Waletzko	Patricia O'Connell
Michael O'Connor	Molly Seidel	Devin Wein	John O'Creagh
Emma O'Donnell	Ciaran Sheehan	Delaney Westfall	Aideen O'Kelly
David O'Hara	Stanley Allan Sherman	Erin Wilhelmi	Chris O'Neill
Lauren O'Leary	Brooke Shields	Zachary Williamson	Milo O'Shea
Erin O'Leary	Chika Shimizu	John Windsor-	Joshua Park
Kimberly S. O'Loughlin	A.J. Shively	Cunningham	Harold Prince
Finn O'Sullivan	Frank Shouldice	Mary Wiseman	Carmel Quinn
Clare O'Malley	Kira Simring	Sam Yates	Charles Nelson Reilly
Jamie O'Neill	Narelle Sissons	Rex Young	Enid Rogers
Giles Packham	David Sitler	Haydee Zelideth	Jack Ryland
Michael Palmer	John Slattery	Evan Zes	Marian Sands
Tim Palmer	Emmet Smith	Kat Zhou	Julian Seldes
Zhe Pan	Harry Smith	Robert Zukerman	Sloane Shelton
Amber Paul	J. Smith-Cameron	<i>In Memory</i>	Maurice Sheehan
Kent Paul	Jonathan Snipes	Brendan Burke	Stephen Sondheim
Neil Pepe	Meredith Sommers	Helena Carroll	Ian Stuart
Patti Perkins	Olivia Songer	Richard Clausen	Robert-Charles Vallance
Dave Perry	Rick Sordelet	Paddy Croft	Tony Walton
Brian Petchers	Dale Soules	Donal Donnelly	Paul Weidner
Adam Petherbridge	M. Florian Staab	Vincent Dowling	Fritz Weaver
Megan Peti	David Staller	Alvin Epstein	

(List from the last 5 years
as of September 2024)

CONTRIBUTORS TO IRISH REPERTORY THEATRE

INDIVIDUAL SUPPORTERS

Irish Rep gratefully acknowledges the following individuals for support received this year. Although space limitations allow us only to list donors of \$350 and above, we thank our supporters at all levels.

\$25,000 AND ABOVE

Anonymous
Kathleen Begala & Yves-André Istel*
Loretta Brennan Glucksmann*
Tom Cashin*
John Duane*
Tina Pendergrast Santi Flaherty*
John Gardiner*
Debby & Rocco Landesman*
Ellen McCord*
Colleen Murphy*
Joseph & Mary Lou Quinlan*
Virginia Richards
Nancy Woodruff & Mark Lancaster*

\$8,000 - \$24,999

Anonymous
Kay Allaire
Anthony & Patricia Alofsin
Mitch Appel*
Ambassador Elizabeth Frawley Bagley*
Kim Bendheim
Marvin & Patricia Carlson
Kevin M. Curley*
Barbaralee Diamonstein-Spielvogel*, *in honor of Tom Cashin*
Kathleen & Michael Dowling*
Eoin & Rebecca Duane*
Ellen & Frank Estes
Matt Guercio
Brian & Carla Hahn, *in honor of Colleen Murphy*
Sophia Hughes*
Michael Leddy
Simon Lorne*
Sophie Sweetman McConnell*
Monica Mullin
Barry Munger & Sarah O'Neill
Joan O'Meara Winant*
Brendan O'Reilly*
Kathleen & Peter Quinn*
Barry & Sheryl

Schwartz*
Anna V. Smith*
Daniel Snow & Merilee Raines
Anne & Scott Springer*
Gary Stern

\$4,000 - \$7,999

Anonymous
Bernard Bailey
Kathleen Walsh & Gene Bernstein
Ann Burgmeyer
Trixia Camacho & Anthony Aguila
Brendan Cameron, *in honor of Tess & John Cameron*
Linda Carson*
Susan Colucci-Tarzia
Margaret Duffy
Patricia Dugan, *in honor of Bill Perlmuth*
David Evans
Linda Fane
Ellen Seeley
Herbert & Cynthia Fields
Lori & Edward Forstein
Patricia Francy
Shelly & Vincent Fremont*
Monique Giroux
John Greed
James Hart
Sigrid Hess
Jerry Heymann
Peter Kelly
Robert Kelman
Swoosie Kurtz
Cathy & Christopher Lawrence*
Lois Lipton
Florence Mahony, *in honor of Brian Mahony*
Patricia & Bernard McElhone
Eileen McInerney
Terry Meehan, *in honor of Kathleen Begala*
Mike Melody
James & Dore Normile
Micheal O'Siadhail & Christina Weltz, *in honor of Charlotte Moore & Ciarán O'Reilly*

Carole Pesner
Marcia Purcell
Thomas Quick*
Robert Robbins
John Schwartz*
Jack Sennott
Patricia Stockhausen & Michael Emmerman
Catherine Terrell
Thomas Walsh, *in memory of Edward J. Walsh, Jr.*
Nina & Michael Zilkha

\$1,500 - \$3,999

Anonymous (2)
Billy Sullivan & Brooks Adams*
Anne Anderson
Vernon Bauer & Christopher Carolan
John Lee Beatty*
Steven Beede*
Dympna Bowles & Donal Fairley
David & Deirdre Brennan*
Jeffrey Bruce
Peter Burk & Nelly Edmondson*
Carolyn Perla & Joseph Cahalan*
Maureen & James Callanan*
Elizabeth & Colin Callender*
in honor of Tom Cashin
William Carrough
Vernon Bauer & Christopher Carolan
Michael Charles
Andrew J. Cohen*, *in honor of Tom Cashin*
Linda Corradina
Keith de Lellis*
John de Stefano*
Gene deBartolo & Harold Streitman*
Michael Emerson*
John Fitzpatrick
Michael & Angela Errico
John Fitzpatrick
Mike Forman
John & Marian Fouhey
Maureen Gebhardt & Len Goldberg*, *in honor of Barbaralee Diamonstein-*

Spielvogel
Harry & Kathy Hagedorf
Mary E. Harrigan & Andrew P. Tothy*
Joseph Hassett*
Molly K. Heines & Thomas J. Moloney*
Jane B. Holzer*
Katherine Houghton
James Houlihan*
Robert & Sally Huxley
Sophia Hughes*
Robert & Sally Huxley
Penny & Thomas Campbell Jackson*
Adrian M. Jones
Patricia & William Jordan
Sharon Karmazin
Thomas Kelly*
Brigid & Ed Kenney
Neal Kilbane*
Mary Jane & Jeff Kupsky*, *in honor of Nancy Woodruff & Colleen Murphy*
Thomas & Judy Leane
Andrew Levander
Patricia Lewis
Dr. Franklin Lowe & Anne Anderson*
Robert McCain*
Gerard Meagher*
Mark & Bridget Merriman*
Esther Milsted
Carole Pesner
Ned & Valerie Monaghan
Michael Nassar
Ciaran O'Driscoll & Susan Isla Tepper*
Sylvia & Michael O'Neill
Maureen O'Reardon
Mairead O'Sullivan*
Peter & Marilyn Oswald
Maryellen & Mark Phelan
Gustavus Remak
Ramsay
Maria & Steve Reed
Jonathan Reilly
Joseph Rokacz*
Fiona & Eric Rudin*, *in honor of Tom Cashin*

CONTRIBUTORS TO IRISH REPERTORY THEATRE

David Sadroff
 Don & Dana
 Scardino-Williams*
 Rose & Laura Schwally
 The Shanahan Family
 Julia Shea
 Donna & George Smith*
 Matthew Patrick Smyth*
 Chris & Joanne Stavrou
 Simona Volpi &
 Peter Stevens*
 Paul Ukena*,
 *in honor of Tom
 Cashin*
 Mindy & Marc Utay*
 Rima Vargas-Vetter*,
 *in honor of Tom
 Cashin*
 Kathryn F. Wagner
 Elsie Walker*
 Joan Weingarten &
 Robert Donnalley
 Angela Westwater &
 David Meltus*
 Stephen Whyte &
 Rebecca Ralston
 Vaughn Williams*
 Susan Yarnell
 Burton & Sue Zwick

\$850 - \$1,499

William Aaenes &
 Elizabeth Carney
 Dylan J. Baker*
 Meg & Jimmy Baker
 Nancy & Bruce Bent
 Sheila & Clarence
 Blair
 Sandy Brant*
 Virginia Brody
 Dr. Elizabeth
 AR Brown†
 Edmund Byrnes*
 Brendan Cahill
 Mary Cahill
 Andrew & Cathy
 Carron
 Judy Cash
 Constance Christensen
 Nargiza Rackmanova*
 Julie Connelly
 Clare Curtin
 Martin Daly
 James & Lucy
 Danziger*
 James & Diana Davies
 Stephanie & Michael
 Ferdman Fund*,
 *in honor of Tom
 Cashin*
 Jan & Dick Demenus
 Beth Rudin DeWoody
 & Firooz Zahedi*,
 *in honor of
 Tom Cashin*
 Domitilia M. Dos

Santos
 Linda Dupree
 Cathy Dwyer
 Anita & John Fiorillo
 Derek Flanagan
 Joan Flanigan*
 Tom Fontana*
 Charles Forma
 Patti & Chris
 Gallagher
 Marguerite Gary
 Roberta Garza
 Patricia Geoghegan
 Mary & Alec
 Gerster
 Fred Gilbert
 Joe Godfrey &
 Keith Halstead*,
 *in honor of Ellen
 McCourt*
 Joyce Gordon
 Michelle Griffin
 Amy Grissom
 Mary Harrison
 James & Ellen
 Hillman
 Geraldine Hughes
 Rita H. Irons,
 *in honor of
 Trish Harty*
 Ken Jenkins
 Simon Jones
 Bill & Margaret
 Kable
 Eric Katz & Susan
 Barbash
 Nina Katzamder*
 Christian Keese*
 Anthony Kelly
 Stephanie &
 Sam Lebowitz
 Francois & Calleen
 Letaconnoux*
 Jeanne Levan
 Beth & Jim Lewis
 Claire Lieberwitz
 Douglas Liebhafsky
 & Wendy Gimbel
 Jane Macan
 Ruth H. Marcon
 Dr. Jim Marion &
 Allison Rutledge-
 Paris*,
 *in honor of Charlotte
 Moore & Ciarán
 O'Reilly*
 Steve Martin &
 Anne Springfield*,
 *in honor of
 Jean Korelitz Matza*
 William J. Martin
 Melanie Mason
 Joan Mattson
 Margaret McConnell
 Neckles*,
 in honor of Margaret

Tolan McConnell
 Tobias Meyer &
 Mark Fletcher*
 John Moroney
 Michael P. Mullen &
 David Freiman*
 Fay Novack
 James O'Malley*
 Alexandra of Greece*
 Mona Perlhagen*
 Leslie Purcell*
 Katia & Howard Read*
 Carolmaria
 Rehhauser
 Matthew & Beth
 Ricciardi
 Ricki Roer
 Marjorie Rosenthal
 Jim Rossman
 Brian Sawyer*
 Janet Kane Scapin
 Bernard Schleifer
 Ellen Schleifer
 Patricia Schoenfeld*
 Rose & Laura Schwally
 David Green & Karen
 Segal
 James Sherman*
 Zachary & Susan
 Shimer
 Pamela Singleton
 Ric Sonder & Susan
 Monserud
 Michael Stanton
 Ingrid Steffensen &
 Jeffrey Bruce
 Anna Sui*
 Gregory B. Sullivan
 Dr. Larry Sullivan
 Jonas Sundström*
 Laura & Steven Taub*,
 *in honor of Tom
 Cashin*
 Kenneth & Jean
 Telljohann
 Amor & Maggie
 Towles
 Dan Barry & Mary
 Trinity
 Frances & Paul Turner
 Elaine Walsh & Brenda
 McGowan
 Richard & Linda
 Warren
 Harrison J. Weisner
 Ken & Cathy Weiss*,
 *in honor of Tom
 Cashin*
 Jane Whitney Gruson*,
 *in honor of Ellen
 McCourt*
 Sarah & Gary
 Wolkowitz*,
 *in honor of Tom
 Cashin*
 G. Vaughan Wortman

\$350 - \$849

Anonymous (3)
 Miriam Adelman
 Kim & David Adler
 Joseph Aiello, Jr.
 Enid Ain
 Janice Akerhielm
 Louis Alexander
 C. Edmonds Allen
 Joseph T. Anderer
 Richard Anderman*,
 *in honor of Tom
 Cashin*
 Oliver & Brenda
 Anderson
 Heather Anguiano
 Anthony Argentino
 Patricia Armstrong
 Joanne & Andrew
 Aronson
 Lynn & Mark Barger
 Elliott
 Edward Barlow
 Robert Barrett
 John Barrie & Betsy
 Smith
 Francis Barry
 Judith Barry & Kevin
 McCormack
 Andrea Battel
 Seth Bauer & Elysa
 Marden
 Douglas Baxter
 Kieran Beer*
 Joseph Bell & Peter
 Longo
 Sean Benson
 Paul B. Bergman
 Pegi & Kent Bernard
 Clint Best
 Lewis Black
 Frederic Block
 Carmine D. Boccuzzi &
 Bernard I. Lumpkin
 Stephen Bogardus
 Marion Boulitbee
 Michael Bove
 Trish Bowen & Stan
 Guzek
 Gail Boyle & Justine
 Diianni
 Edmond Brady*
 Peg Breen
 Carol Brennan & Bob
 Crothers*
 Katherine Brogan
 Daniel Bruining
 Gloria Brusoski
 Katherine Burke
 David Butters
 Dr. Linda Byington
 Cathy Caplan
 Daniel Casey
 Mary & George
 Castellitto

CONTRIBUTORS TO IRISH REPERTORY THEATRE

Agnes Cavalari	Richard & Jennie Dorn	William Grogan	Carol & Sanford Krieger
Carolyn Chave	Sally Dorough	Michelle Tokarczyk &	Judith & Douglas Krupp
Donna Chirico	Susan Dowling	Paul Groncki	Linda & Chris Kuehne
Kathleen Clark &	Joe Dowling & Siobhán	Rachel Grygorciewicz*,	Dr. Miodrag Kukrika
Richard Frankel*	Cleary,	<i>in memory of Suzanne</i>	Robb Lady
Suzanne & Robert	<i>in honor of Charlotte</i>	<i>Mulligan Brightbill</i>	Cynthia & Anthony
Cochran*	<i>Moore & Ciarán</i>	Jan Guifarro	Lamport
Barbara Codd	<i>O'Reilly</i>	Robert Hall	Barbara Landreth
Richard & Irene	Kevin Downes	Martha Hally & Howard	Neil Lane
Coffman	Mitchell & Donna Drach	Sherman	Peter Lang*,
Bob Colacello*	Kevin & DG Duffy	Ciona Hamilton	<i>in honor of</i>
Lewis Cole	Emily Dunlap	John Handy	<i>Tom Cashin</i>
Lynn Collins	Arthur Dunnam*,	Tiffany Hanulec	Sheena Laughlin
Mary Jo Collins	<i>in honor of Tom</i>	Phillip Hanvy	Suzanne Laurier
Aidan Connolly &	<i>Cashin</i>	Delphi Harrington	Russell Lawyer
Roberto Achacoso*	Dulcina Eisen	Olga Hartwell	Alexandra L. Diamond*
Joe & Paula Connolly	Frances Efenbein	Billy Haugh	Maureen & B.J. Leddy
Patricia A. Conran	Barbara Janowitz &	Jeremiah & Megan	Ann Leddy
Matthew Conroy	Peter Entin	Healey	Beverly Leffers
Mary Kay Conwell	Laurie Eustis*	Denise Heebink	Peter Leffman
Julie Copeland & Robert	William Farkas	Margaret Hennessey	Mary Ellen Lenahan
Beller	Jim Farrell	Michael Herko	Frank & Patricia Lenti
Audrey & Fergus	Prof. Jim Fauvell	Kelley Hicks*	Gina Leonetti
Coughlan	Kathleen A. Fay	William Victor Higdon	Samuel Lester
Marina Couloucoundis*	Emer Featherstone	Regina & Joe Hitchery	Ann Levin
Allison Cryan	Allison Fillmore	Ann Hohenhaus	Susannah Lewis
Richard & Constance	Steven Finley	Mary Jean Holland	Susan Lichter
Culley	Robin Fitelson	Stephanie Holmes	Joan & David
Robert E. Curley	Robert Flaherty	Marsia Holzer*	Lieberman
John Curran	Michael & Noreen	Rita Houlihan	Teresa & Thomas Lilly
Jeanne Curtis,	Flugger	Erin E. Houlihan & John	Gregory & Patricia
<i>in memory of Peter D.</i>	Rosaleen Flynn	T. Bostick	Loftus
<i>Bull</i>	Sarah Foote	Karen Howlett	Michael Lonergan
Julie McNally Daher	Paul Ford & Nancy	Priscilla Hughes	Joseph & Linda
Dr. Jeff Dailey	Young	David Iles	LoSchiavo
Chris Daley	Jonathan Foster	Susan & Brent Inman	John & Chris Love
Michela Daliana	Kay Foster*	John Istel	Joel Ludlow
Katie Daly*	Beth Fowler Witham*	Zeljko Ivanek	Nelson J. Luria
Blythe Danner	David Frankel & Lynn	Jeanette Ivers	Maureen Lydon
Lisa-Karyn & Larry M.	Freedman	Dana Ivey*,	William Lynch
Davidoff	Larry & Gloria	<i>in honor of Charlotte</i>	Attracta Lyndon
Robert & Judith Delasi	Berkenstat Freund	<i>Moore</i>	Gina MacArthur
Maribeth DeLorenzo &	Marsha & John Funk	Kathleen & George	Edward Mafoud
Eric Winslow	Jane Furth	Jamison	Paul Mahood
Monroe Denton	Peter Gallagher & Paula	Karen Johnson Le Sueur	Edward Malone
Jamie deRoy,	Harwood	Thomas Joyce	John Michael Maloney,
<i>in memory of John</i>	Kerith Gardner	John P. Joyce	<i>in honor of</i>
<i>McMartin</i>	Elan Garonzik	Joan Kaefer	<i>Charlotte Moore &</i>
Kathleen DeVito	Robert G. Gasson	Brian Wynne Kaltner	<i>Ciarán O'Reilly</i>
Maureen Dezell	Charles & Brenda	Michael Kaplan*,	Florence Mannion
Martha & Stephen	Gelles	<i>in honor of</i>	Andrea Marber
Dietz,	Anna Hannon Gill	<i>Tom Cashin</i>	Marilyn Marcossan
<i>in honor of Rufus</i>	Sealy Gilles	Marsha Kaplan*	Alan Mark
<i>Collins</i>	Thomas & Elizabeth	Jamie Kay	Bob & Jean Markley
Gail Boyle & Justine	Gillett	Michael & Maria Keane	Peggy Marks
Dianni	Dr. Eileen Gillooly	Edward Kelleher	James H. Martin
Adriana Dilancea	Edward Giltenan	Pamela Kendall	Marsha Mason
Rita Dillon	David Goldberg	Fiona & Patrick Kelly	Dale Mathias
Barbara & Joseph Dillon	Margaret Goodman	Lawrence Kenny	Nina Korelitz Matza*
Joanne Dillon	Clare Gorman	Bob Kerrey	Doris May
Jack DiMonte	Marianne & Brian Grady	Ellen Kirch	Linda Mayerik
Mary Lynn Dobson	Elizabeth Grayer	Larry Kirwan	Richard Mayeux
Peter Dolan	Mark Murphy & Amy	Fran Klimavicius	Mary & Thomas McCabe
Donald Donovan	Greer	Peter Klosowicz	Gerald McCarthy
John Doran	William Grimm	Ann Korelitz*	Brian McCarthy*
Lorna Doran	Ruth Ann Grissom	Kenneth Kramer	Siobhan McCormick

CONTRIBUTORS TO IRISH REPERTORY THEATRE

Patricia & John McDonagh	Canner James O'Neill	Andrew Rossi* James & Nicky Rothschild*	Jenny Steingart, <i>in honor of Rufus Collins & Bill Irwin</i>
John & Cait McDonagh	Anne O'Neill	James Rowan	Kitty Sullivan
Thomas J. & Mary Ann McDonald	Peter & Carmel O'Reilly	Eoin Ryan	Patricia A. Sullivan
Brian & Rita McDonough	John O'Rourke	Dr. Peter G. Sack	Aline Sullivan
Mary McGarry	Patricia O'Shea	Alfred & Patricia Sainato	Nancy Sussman
Patrick J. McGartland	Immigration Law Office of Kevin J. O'Sullivan PLLC	Janice Sakkal	Dr. William Sutton
Una McGillicuddy	Margaret Molloy & Jim O'Sullivan	Robert Salerno & Margaret Skaggs	Walter Swearingen
Michael McGinnis	Dennis O'Brien	Patricia Santelli & David Hamilton	Kathryn Sweeney
Thomas J. McGonigle	Daniel Okrent	Nanette Lepore & Robert Savage	Jane Tate
Patricia McGovern	Anita Orlin	Richard & Elizabeth Scarлата	Carole Teller
Kathleen McGraw, <i>in honor of Charlotte Moore</i>	Jeffrey & Maureen O'Sullivan	Karen & Charles Schader	William Thurston
James McGroarty	Jeffrey Padnos	Chris & MaryAnn Schaeffer	Robert Tichio, <i>in honor of Bill Irwin</i>
Cathleen McGuigan, <i>in honor of Ricki Roer</i>	Richard & Jean Page, <i>in honor of Colleen Murphy</i>	Cathy Schleussner* David & Sherri Schmidt	Lisa Tillinghast
Peggy McGuire	M. Linda Parker	Marguerite Schneider	Corey Grant Tippin*, <i>in honor of Tom Cashin</i>
Judith & Raymond McGuire	Perry Pazer	Beth Riva Schoenbrun	Michelle Tokarczyk & Paul Groncki
Alice McInerney	Theresa Perl	Rachel & William Schultz	Dr. Regina Torsney- Durkin
William & Jude McLane	Randolph Petsche	Ann Schwartz	Dennis Tracey
Corinne McSpedon	Dennis Philbin	Sheryl Schwartz	Brad Kenyon & Meredith Trede
Martin Meisel	Lenny Pickett	Ken Seslowe	Anita Trotta
Margaret Menton	Dian Pickoff	Carole Shaffer-Koros	Janaima Tschape*
Judith & Richard Merbaum	Tara Polen	Owen Sherry	Judith & William Turner
Doris Marie Meyer	Chris Policano*, <i>in honor of Mike Keogh</i>	Margaret M. Sharkey*, <i>in honor of Colleen Murphy</i>	Loretta M. Ucelli*
Susan McGlory Michel	Dr. Roger Pollock	Jeffrey Sharlach	Mary-Ann Valiulis
Ann Miner	Janice Pratt & Roy Allison	Barbara Shea	Ariane van Buren
Gwen Arner Moffat	Carol Prendergast & Andrew Greenberg	Bart Sheehan	Noah Virgile
Donald Monahan & Suzanne Hennessy	Sandra Pierson Prior	Terry Sheridan	Kenneth Vittor & Judith Aisen
John Morawetz, <i>in honor of John Millington Synge</i>	Karen Proctor Dooley	Martin Shnay & Heather Moore*	Susan Voss
Kerry & Michael Morelli	Margaret Judd & Bennett Pudlin	Anne Shortall	Monica Wagner
Frank Morra	Brendan & Nancy Quinn, <i>in memory of Joseph R. Quinn</i>	Gretchen Siebel	Susan Wagner
Louis M. & Joan I. Morrell	Eamonn & Ellis Quinn	Leslie & Vicki Silverman*	Jeff Walsh
Nicholas Morrissey	Rhianna & Eugene Roddy	Kathleen Hillman Simmons*	Joan Waricha
John Mullally	Matthew Quirk	Rebecca Skinner	Jennifer Warren
MaryAnne Muller	Ita Rahilly	Ian Slater*	Karen Weissberger & James Twohie
Michael Mulligan	Saul D. Raw	David & Laura Smith	Louise & Daniel Weisz
Maura Mulligan	Judy A. Regan	Karen Smith	Deborah Whitmore
Mary M. Murphy	Muredach P. Reilly	Dr. Thomas Smith	Janice Willett
Kevin Murray	Gretchen Rennell Court*	Elizabeth Smith	Helen Williams
Mary Murray	Charles Rich	Jerry & Beth Smolin	Lisa & Frank Wohl
Kate Murray	Nigel W. L. Richmond	Jason Smoller, <i>in honor of Charlotte Moore & Ciarán O'Reilly</i>	Robert Young
Deborah Myers	Richard Lalli & Michael Rigsby, <i>in honor of David McElwee & A.J. Shively</i>	Patricia Sochor	Dorothy Zagami & Nancy Olsen
Charles Nash	Kathleen Roberts	Rich Soja	Jayne G. Zebrowski-Maler, <i>in honor of Ernest R. Maler, Jr.</i>
Rilla & Jack Neafsey	Sarajane Robinson	David W. Spears	Lorette Zoitos*
Richard Nolan	Senturia	Karen & James Speyer	Cordelia Zukerman
Marietta O'Brien	Lynn Roddy	Alexander Stanton, <i>in honor of Matthew Conroy</i>	
Liz O'Brien*	Janet Rosen	Elizabeth & Michael Stanton	
Edward O'Dea	Barbara Ross	Mary Stanutz	
Ed O'Donnell			
Niall O'Gara & Geraldine Collins			
Adele O'Grady Botticelli			
Colleen O'Malley			
Kevin O'Mealy & Jane			

*Includes support of Irish Rep's
Annual Gala

*Indicates deceased patron

CONTRIBUTORS TO IRISH REPERTORY THEATRE

FOUNDATION, CORPORATE & GOVERNMENT SUPPORTERS

(as of September 8, 2024)

Irish Repertory Theatre's work would not be possible without public funds provided from the New York City Department of Cultural Affairs with support from Mayor Eric Adams, Cultural Affairs Commissioner Laurie Cumbo, New York City Council Member Erik Bottcher, and Manhattan Borough President Mark Levine, as well as support from New York State, including Governor Kathy Hochul and Assembly Member Tony Simone.

\$50,000 AND ABOVE

The American Ireland Fund*
The Charina Endowment Fund
The Department of Foreign Affairs &
The Consulate of Ireland in New York
The Howard Gilman Foundation
MacMillan Family Foundation
The Morris & Alma Schapiro Fund
New York State Council on the Arts (NYSCA)
Rockefeller Brothers Fund
The Shubert Foundation

\$20,000 - \$49,999

Culture Ireland
The Harold & Mimi Steinberg Charitable Trust
The Hugoton Foundation
Jewish Communal Fund
Leon Levy Foundation

\$10,000 - \$19,999

Cleary Gottlieb Steen & Hamilton LLP*
Diamonstein-Spielvogel Foundation
The Fan Fox & Leslie R. Samuels Foundation
GHR Foundation
The Gladys Kriebel Delmas Foundation
The Kite Key Foundation
Leon Lowenstein Foundation

Michael Tuch Foundation
National Endowment for the Arts
O'Neill Family Charitable Trust
The Waldman Foundation
Willkie Farr & Gallagher

\$5,000 - \$9,999

The Axe-Houghton Foundation
The Billy Rose Foundation, Inc.
Coastal Community Foundation of South Carolina
Dechert LLP
The Kors Le Pere Foundation*
The Lucille Lortel Foundation
The Muriel F. Siebert Foundation
Mutual of America
Neuberger Berman
The Richenthal Foundation

\$1,000 - \$4,999

The 515 Foundation
Apollo Global Management
Bank of America
Bristol-Myers Squibb Foundation
Caplan Family Foundation, Inc.
The Gustavus Remak Ramsay Charitable Gift Fund
Haley Foundation
The Lambs Foundation

*Includes support of Irish Rep's Annual Gala

PLAY YOUR PART & BECOME A MEMBER!

Help Irish Repertory Theatre bring the finest Irish and Irish-American drama to the stage by becoming a member!

Membership is tax-deductible to the full extent of the law. Thank you.

FRIEND — \$100

- 20% discount on 1 ticket per production
- Complimentary ticket exchange
- Advance ticket sales
- Irish Rep newsletter

SPONSOR — \$200

- 20% discount on 2 tickets per production
- 2 concessions vouchers

ASSOCIATE — \$350

- 20% discount on 4 tickets per production
- Waived service charges
- Irish Rep program listing

PARTNER — \$850

- 12 Ticket Flex Pass (up to \$850 value)
- 20% off tickets beyond Flex Pass
- Welcome gift
- Access to Patron Nights

BENEFACTOR — \$1,500

- 24 Ticket Flex Pass (up to \$1,680 value)
 - 4 concessions vouchers
 - Premium seating*
- *Subject to availability & conditions

PRODUCER — \$4,000

- 40 Ticket Flex Pass (up to \$2,800 value)
- 6 concessions vouchers

DIRECTOR — \$8,000

- 60 Ticket Flex Pass (up to \$4,200 value)
- 2 tickets to each Irish Rep Opening Night
- 8 concessions vouchers

ANGEL — \$15,000

- Unlimited Flex Pass*
- *Up to 6 tickets per performance date, subject to availability

For more information, please visit irishrep.org/membership
or contact Membership at (212) 255-0270 or email at Development@IrishRep.org



MOLLY'S



CLASSIC IRISH PUB

A most authentic Irish Pub
(conversations encouraged)
Open for lunch, brunch and dinner!

287 3rd Avenue
Between 22nd and 23rd Street
212.889.3361
info@mollysshebeennyc.com

mollysshebeen.com



MALONE'S



IRISH BAR & GRILL

Serving full, Irish breakfast daily,
showing all sports and convenient to
Grand Central Station
+ an outdoor patio!

Monday to Friday: 8AM - 4AM
Saturday and Sunday: 11AM - 4AM

692 Third Avenue between 43rd and 44th St.,
New York, NY 10017
646.858.0110
info@malonesnyc.com

malonesnyc.com

[IRISHREP.ORG/MEMBERSHIP](https://www.irishrep.org/membership)

Membership starts at just \$100



GET THE MOST FROM THE THEATRE YOU LOVE

As a member of Irish Repertory Theatre, you'll enjoy the best access to the great works of Irish & Irish-American artists and exclusive benefits reserved for our most devoted supporters.

Bill Irwin and John Douglas Thompson in the 2023 Irish Rep production of *Endgame*. Photo by Carol Rosegg.